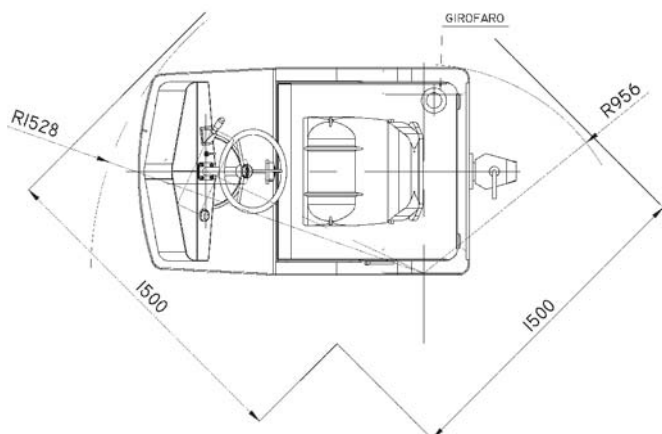
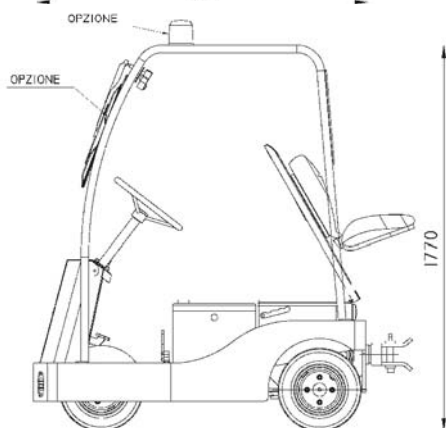
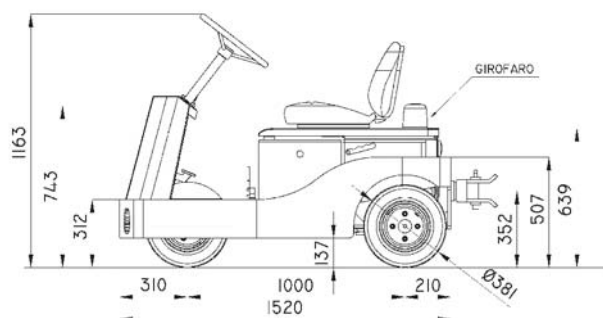
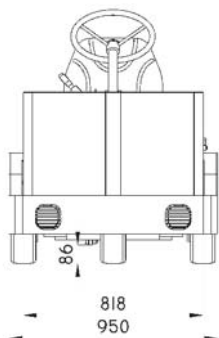




Electric Tow Tractor TTE 40

Towing capacity kg. 4.000



ELECTRIC TRACTOR TTE40

Extremely compact, easy to drive, it can make a 180° conversion in less than 2,5 m. The "shock-resistant" loading chassis is realised with high thickness plates, laser cut and electro-welded, allowing to have the best exploitation of the high torque performances of the AC motor.

Complete instrumentation: key switch, check control for immediate detection of any fault or breakdown with function of hour counter and battery charge indicator, ergonomic motion/lights/horn switch.

Lights: 2 front beams, rear tail and stop lights.

TTE 40 is available both in the basic version and with an open cabin for weather protection, equipped with glass windscreen to approved standards and electric wiper. It can also be equipped with **soft doors** to increase operator's comfort.

Towing hitch with pin, special and/or automatic hooks can be supplied as options.

Steering wheel: same dimension as the rear ones, mounted on a big diameter fifth wheel; low step-on platform for a comfortable access to the driving place.

Rear axle: forms a unit with the motor-transmission, mounted parallel to the axis of the rear wheels, it is connected to the chassis with rubber silent-blocks.

AC motor, brushless, closed execution with external venting system. equipped with an encoder, a thermal probe and an electromagnetic brake with manual unlock device.

Speed control through a three-phase microprocessor inverter with regenerative braking. Programming interface (supplied separately).

"Man on board" device, under the seat or, on request, pedal controlled.

Automotive-like service brake, with brake pedal and pump casing, acting on rear wheels with drums.

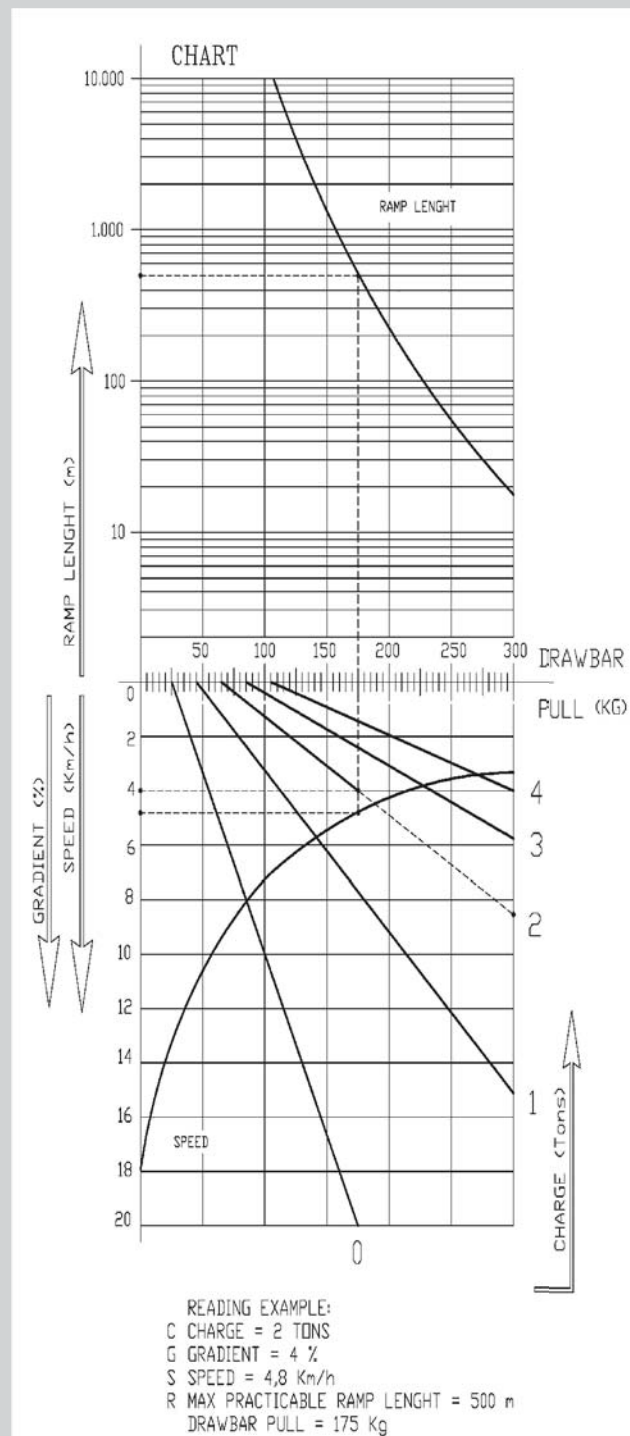
Electric braking, preset, operating automatically when accelerator pedal is released, with brake pedal's first stroke and on reversing direction.

Parking and emergency brake, electromagnetic with electronic control: the brake is normally engaged when the unit is parked.

Standard painting: RAL 7021/7035 grey; other colours available upon request (option).

All SIMAI units are manufactured and certified in compliance with the Machine Directive and bear the CE mark.

FEATURES	1	Manufacturer	SIMAI SpA		
	2	Model	TTE 40		
	3	Towing capacity	S2=60'	t	4
	4	Power supply	Electric		
	5	Type of control	Sitting driver		
	6	Tire equipment	PN=Pneumatic SE=Extra-elastic	PN/SE	
	7	Wheels	fore/rear X=motive	1/2X	
	8	Platform size	length x width	mm	-
DIMENSIONS	9	Platform height	mm	-	
	10	Length	mm	1520	
	11	Ingombri	width	mm	950
	12	height	mm	-	
	13	height steering wheel	mm	1163	
	14	Turning radius	R1 fore	mm	1528
	15		R2 rear	mm	956
	16		R3 inner	mm	-
	17	Aisle width	L1 fore 90°	mm	1500
	18		L2 rear 90°	mm	1500
	19	Wheelbase	mm	1000	
	20	Track	fore/rear	mm	-/818
	21	Ground clearance	laden lowest point	mm	86
	22		centre	mm	137
PERFORMANCES	23	Speed	travel unladen/laden	Km/h	15/7
	24	Drawbar pull	per hour	Kg	90
	25	Max Drawbar pull	acceleration	Kg	320
	26	Gradeability	max unladen	%	See chart
			max laden	%	See chart
	27	Autonomy	50% unladen 50% laden	Km	35
	28	Weight unladen	with battery and cabin	Kg	710
	29	Axle loading	fore/rear	Kg	290/420
	30	Tires	fore/rear	n°	1/2
	31		Dimensions fore	15x4,5x8	
	32		Dimensions rear	15x4,5x8	
	33	Brakes	service-parking	Pedal/Electrom	
	34		mechan(M) hydraulic(I) electrom(E)	I/E	
	35		type	Drum	
TRANSMISSION	36	Suspensions	axle fore/rear	Rigid/Rubber elastic support	
	37	Battery	voltage/capacity	V/Ah	24/240 - 300 - 360
	38		weight	Kg	320
	39		type	Armoured	
	40	Motor	drive: power rate S2=60'	KW	2 AC
	41		hydraulic steering: power rate S2=60'	KW	-
	42	Speed control	type	Inverter	
	43		gear speed forward/reverse	1/1	
	44	Transmission	type	Red. Gear	



Dimensions are not binding and can be changed in any moment. The performances must be intended for brand new machines, after having completed the running-in tested in Milan Factory in normal climatic conditions. Performances and weight are to be intended with standard motors and battery (reported in bold) and with pneumatic tires. Some data can vary according to different equipments.

SIMAI SpA
 via Civesio 10, 20097 San Donato Milanese, Italy
 Tel: +39 02 5278541 - Fax: +39 02 5278544
 info@simai.it - www.simai.it

