

## SWE155F Medium Excavator

Operating Weight: 33,510 LBS (15,200 KG)

Gross Power: 121 HP (90 kW) @ 2,200

Dig Depth: 18' 2" (5.525 m)



Turn  
over for full  
specifications!

# Technical Specifications and Product Highlights

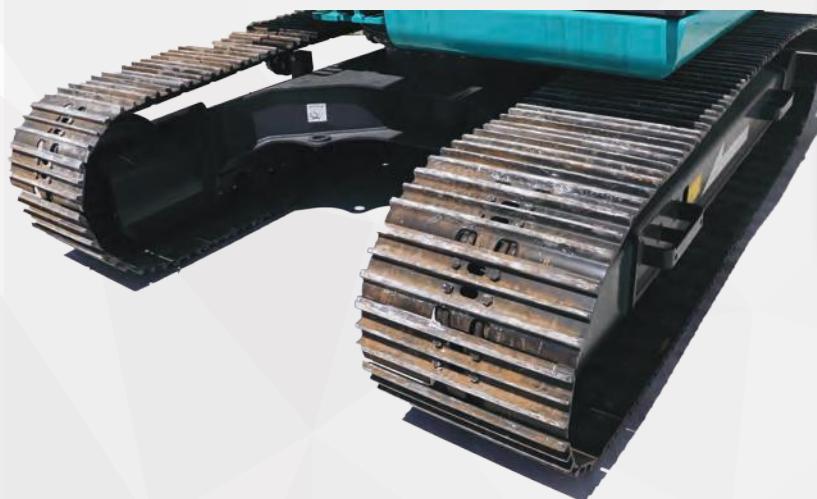
Machine Weight		33,510 lb	15,200 kg	
Machine Dimensions	Overall Length	25' 8"	7.825 m	
	Overall Height	9' 3"	2.8 m	
	Overall Width	8' 6"	2.6 m	
	Ground Clearance	16"	410 mm	
Engine	Brand	CUMMINS		
	Model	QSF3.8		
	Displacement	1 Gal	3.8 L	
	Output	121 HP	90 kW	
	Max Speed (High/Low)	3.3/2 mph	5.3/3.2 kph	
	Max Cutting Height	28' 7"	8.7 m	
Trucks	Max Loading Height	20' 4"	6.2 m	
	Max Digging Depth	18' 2"	5.525 m	
	Max Vertical Digging Depth	16' 5"	5 m	
	Max Digging Reach	27' 6"	8.37 m	
	Tail Swing Radius	8' 8"	2.355 m	
	Max Digging Force (Arm)	17,085 lb	76 kN	
	Max Digging Force (Bucket)	22,480 lb	100 kN	
	Swing Speed	11 rpm		
	Ground Pressure	5.34 psi	36.8 kPa	
	Tracks	Track Width	23.6"	600 mm
		Track Type	Steel Tracks	
		Gradeability	35 Degrees	
	Hydraulics	Brand	KYB	
		Type	2 Piston Pumps	
Total Flow		66.8 gal/min	252.8 L/min	
Total Pressure		4,975 psi	34.3 MPa	
Fuel and Hydraulics Tanks	Fuel Tank Capacity	64.7 Gal	245 L	
	Hydraulic Oil Capacity	39.6 Gal	150 L	



Dual-Braided Hydraulic Lines for safety and durability



Cummins Engine with Tier 4 Final



24" Steel Tracks



Enclosed cab offers air conditioning and LCD Touchscreen for optimal working

**Sunward USA Corp**

Web: [www.sunwardusa.com](http://www.sunwardusa.com)

Address: 2710 Geesling Rd, Denton TX 76208

**Contact Info**

Phone: (469)-353-6890

Email: [info@sunwardusa.com](mailto:info@sunwardusa.com)

**Model:**

SWE155F