

SUNWARD

SL系列

轮式装载机

SL SERIES WHEEL LOADER



■ SUNWARD INTELLIGENT EQUIPMENT CO.,LTD.

Add: Sunward Intelligent Industrial Park, Xingsha, Changsha, 410100, China.
Tel: (0086-731) 83572 828 Fax: (0086-731) 83572 661
E-mail: international@sunward.com.cn
Web: www.sunward.com.cn

■ SUNWARD EUROPE HEAVY INDUSTRY NV

Add: Nijverheidspark 3, 3580 Beringen, Belgium
Tel: (0032-011) 434666
E-mail: eu@sunward.cc

Please read the manual book and maintenance book before operation, changes are periodically added to the information, and Sunward may change the products or services described in this book at any time without announcement. All rights of this manual book reserve to Sunward. SUNWARD Internal Use Only

X-II-Z-1 SWL CH&EN 2016-01

特点 Features

- ★ 单泵分流工作液压系统，节能效果显著；
Single pump, split flow working hydraulic system makes lower consumption and excellent performance.
- ★ 安全可靠的单管路制动系统，钳盘式制动器；
Safe and reliable single pipeline brake system; Caliper disc brakes.
- ★ 负荷传感全液压转向系统，操纵轻便灵活；
Load sensing fully hydraulic steering system makes operation easy.
- ★ 新型豪华驾驶室；New, luxury cabin.
- ★ 采用浙江新柴四缸柴油机；
Adopt Xinchai C490BG four cylinder engine.
- ★ 全液压传动技术，结构简单，性能可靠；
Full hydraulic transmission technology, simple structure and reliable performance.
- ★ 国际标准的24°锥加O型圈的双密封液压管路接头，解决了渗漏油问题；
Double sealed hydraulic pipeline joints with 24°awl and O ring of international standard, avoiding oil leakage.
- ★ 具有高位自动放平性能的工作装置；
Working device with automatically leveling ability at high position.



- ★ 铲斗铰接部位采用防尘密封润滑结构；
Bucket articulated points take sealed, lubricated, dust-proof layers, which owns good durability.
- ★ 整体式豪华仪表台。
Integral, luxury instrument board.

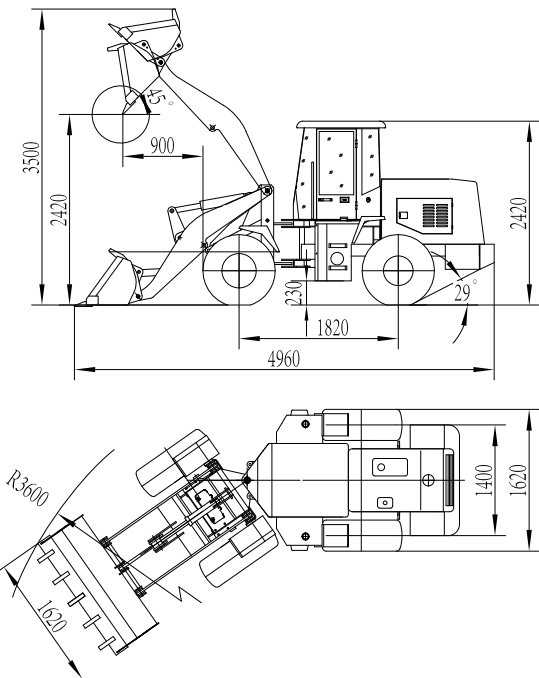
特点 Features

- ★ 单泵分流工作液压系统，节能效果显著；
Single pump, split flow working hydraulic system makes lower consumption and excellent performance.
- ★ 气顶油助力制动系统，钳盘式制动器；
Air over hydraulic brake system; Caliper disc brakes.
- ★ 负荷传感全液压转向系统，操纵轻便灵活；
Load sensing fully hydraulic steering system makes operation easy.
- ★ 采用浙江新柴四缸柴油机；
Adopt XinchaiA495BG Diesel Engine.
- ★ 液力传动技术，分体式结构，可靠性高，便于维修；
Hydrodynamic transmission technology and separated structure, make high reliability and easy maintenance.
- ★ 铲斗铰接部位采用防尘密封润滑结构；
Bucket articulated points take sealed, lubricated, dust-proof layers, which owns good durability.
- ★ 整体式豪华仪表台。
Integral, luxury instrument board.



- ★ 动力换挡变速箱，两进两退档位，软轴操纵，轻便灵活；
Controlled by flexible shaft, hydraulic power shift gearbox with 2 forward and 2 reverse gears makes operate easy.
- ★ 具有高位自动放平性能的工作装置；
Working device with automatically leveling ability at high position.

外形尺寸 Dimensions



选配 Optional

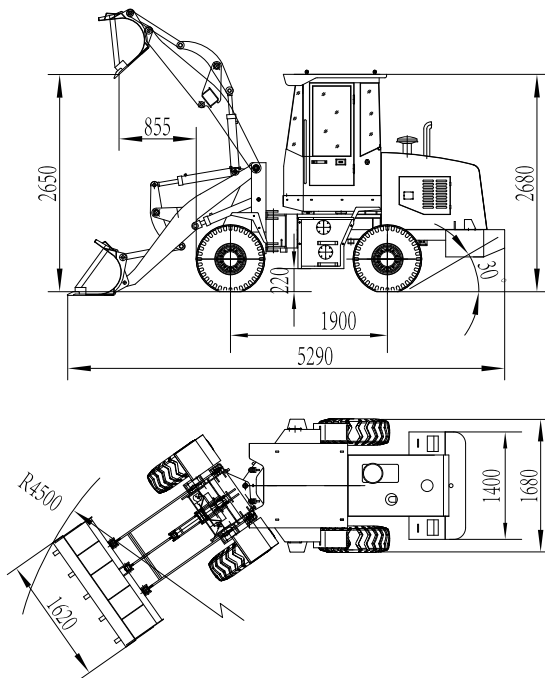
- (1) 新柴BA490BT1-3发动机(32kW / 欧III)
Xinchai BA490BT1-3 engine (32kW / Euro III)
- (2) 先导操纵 Joystick control
- (3) 快换装置 Quick-hitch
- (4) 托叉 Fork

主要技术参数 Main Specification

| 项目 Item | 参数值 Specification |
|---|-------------------|
| 外形尺寸(长*宽*高) Overall dimensions(LxWxH) | 4960*1620*2420 mm |
| 整机工作重量 Operating weight | 3200kg |
| 铲斗容量 Bucket capacity | 0.5m³ |
| 额定载重量 Rated load | 1000kg |
| 卸载高度 Dumping height | 2420mm |
| 卸料距离 Dumping reach | 900mm |
| 动臂提升时间 Boom lifting time | 4s |
| 最大掘起力 Max. breakout force | 35kN |
| 最大牵引力 Max. drawing force | 18kN |
| 最大行驶速度 Max. speed | 16km/h |
| 最大爬坡能力 Max. gradeability | 28° |
| 最小转弯半径 Min. turning radius(outside of rear wheel) | 3600mm |
| 最小离地间隙 Min. ground clearance | 230mm |
| 轴距 Wheel base | 1820mm |
| 轮距 Wheel tread | 1400mm |
| 转向角度 Steering angle | 35° |
| 轮胎规格 Tyre | 12-16.5 |
| 发动机额定功率 Engine rated power | 32kW/2400rpm |

▲备注: 标准配置大车架
Remark: heavy chassis for standard

外形尺寸 Dimensions



选配 Optional

- (1) 先导操纵 Joystick control
- (2) 快换装置 Quick-hitch
- (4) 托叉 Fork

主要技术参数 Main Specification

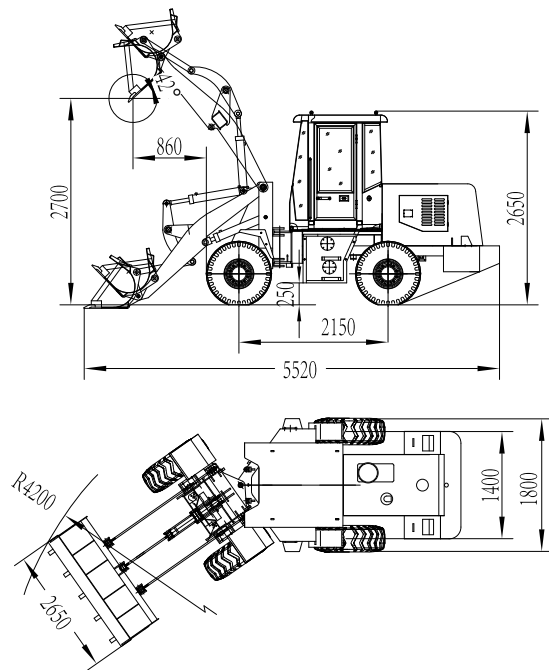
| 项目 Item | 参数值 Specification |
|---|-------------------|
| 外形尺寸(长*宽*高) Overall dimensions(LxWxH) | 5920*1680*2680 mm |
| 整机工作重量 Operating weight | 3700kg |
| 铲斗容量 Bucket capacity | 0.5m³ |
| 额定载重量 Rated load | 1000kg |
| 卸载高度 Dumping height | 2650mm |
| 卸料距离 Dumping reach | 855mm |
| 动臂提升时间 Boom lifting time | 3.6s |
| 最大掘起力 Max. breakout force | 34kN |
| 最大牵引力 Max. drawing force | 30kN |
| 最大行驶速度 Max. speed | 17km/h |
| 最大爬坡能力 Max. gradeability | 25° |
| 最小转弯半径 Min. turning radius(outside of rear wheel) | 4500mm |
| 最小离地间隙 Min. ground clearance | 220mm |
| 轴距 Wheel base | 1900mm |
| 轮距 Wheel tread | 1400mm |
| 转向角度 Steering angle | 35° |
| 轮胎规格 Tyre | 12-16.5 |
| 发动机额定功率 Engine rated power | 36.8kW/2400rpm |

▲备注: 标准配置大车架
Remark: heavy chassis for standard

特点 Features

- ★ 单泵分流工作液压系统，节能效果显著；
Single pump, split flow working hydraulic system makes lower consumption and excellent performance.
- ★ 气顶油助力制动系统，钳盘式制动器；
Air over hydraulic brake system; Caliper disc brakes.
- ★ 负荷传感全液压转向系统，操纵轻便灵活；
Load sensing fully hydraulic steering system makes operation easy.
- ★ 整体式豪华仪表台；
Integral, luxury instrument board.
- ★ 新型豪华驾驶室；
New, luxury cabin.
- ★ 国际标准的24°锥加O型圈的双密封液压管路接头，解决了渗漏油问题；
Double sealed hydraulic pipeline joints with 24°awl and O ring of international standard, avoiding oil leakage.
- ★ 具有高位自动放平性能的工作装置；
Working device with automatically leveling ability at high position.
- ★ 铲斗铰接部位采用防尘密封润滑结构；
Bucket articulated points take sealed, lubricated, dust-proof layers, which owns good durability.
- ★ 采用江苏常柴四缸柴油机；
Adopt Jiangsu Changchai four cylinder diesel engine.
- ★ 液力传动技术，分体式结构，可靠性高，便于维修；
Hydrodynamic transmission technology and separated structure, make high reliability and easy maintenance.
- ★ 动力换挡变速箱，两进两退档位，软轴操纵，轻便灵活。
Controlled by flexible shaft, hydraulic power shift gearbox with 2 forward and 2 reverse gears makes operate easy.

外形尺寸 Dimensions



选配 Optional

- (1) 先导操纵 Joystick control
- (2) 快换装置 Quick-hitch
- (3) 托叉 Fork

主要技术参数 Main Specification

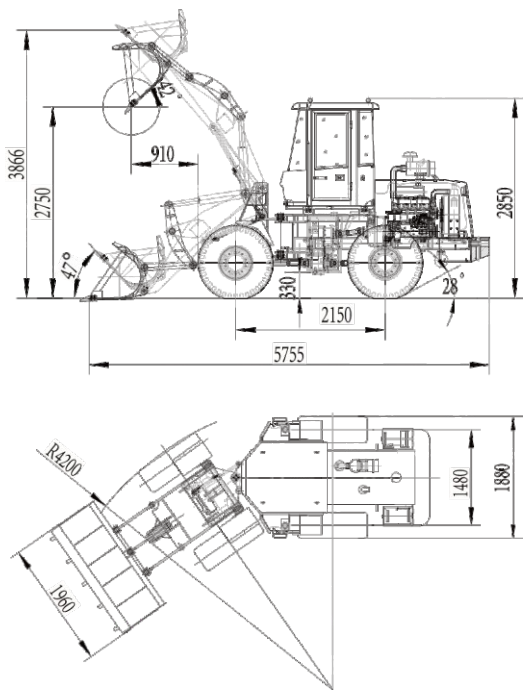
| 项目 Item | 参数值 Specification |
|---|-------------------|
| 外形尺寸(长*宽*高) Overall dimensions(LxWxH) | 5520*1800*2650 mm |
| 整机工作重量 Operating weight | 4500kg |
| 铲斗容量 Bucket capacity | 0.7m³ |
| 额定载重量 Rated load | 1500kg |
| 卸载高度 Dumping height | 2700mm |
| 卸料距离 Dumping reach | 860mm |
| 动臂提升时间 Boom lifting time | 4.5s |
| 最大掘起力 Max. breakout force | 46kN |
| 最大牵引力 Max. drawing force | 33kN |
| 最大行驶速度 Max. speed | 19km/h |
| 最大爬坡能力 Max. gradeability | 28° |
| 最小转弯半径 Min. turning radius(outside of rear wheel) | 4200mm |
| 最小离地间隙 Min. ground clearance | 250mm |
| 轴距 Wheel base | 2150mm |
| 轮距 Wheel tread | 1400mm |
| 转向角度 Steering angle | 35° |
| 轮胎规格 Tyre | 20.5-16 |
| 发动机额定功率 Engine rated power | 38kW/2400rpm |

▲备注: 标准配置大车架
Remark: heavy chassis for standard

特点 Features

- ★ 单泵分流工作液压系统，节能效果显著；
Single pump, split flow working hydraulic system makes lower consumption and excellent performance.
- ★ 气顶油助力制动系统，钳盘式制动器；
Air over hydraulic brake system; Caliper disc brakes.
- ★ 国际标准的24°锥加O型圈的双密封液压管路接头，解决了渗漏油问题；
Double sealed hydraulic pipeline joints with 24°awl and O ring of international standard, avoiding oil leakage.
- ★ 采用新柴A4K41G柴油机；
Adopt Xinchai A4K41G diesel engine.
- ★ 新型豪华驾驶室；New, luxury cabin.
- ★ 铲斗铰接部位采用防尘密封润滑结构；
Bucket articulated points take sealed, lubricated, dust-proof layers, which owns good durability.
- ★ 液力传动技术，分体式结构，可靠性高，便于维修；
Hydrodynamic transmission technology and separated structure, make high reliability and easy maintenanc.
- ★ 负荷传感全液压转向系统，操纵轻便灵活；
Load sensing fully hydraulic steering system makes operation easy.
- ★ 整体式豪华仪表台；
Integral, luxury instrument board.
- ★ 具有高位自动放平性能的工作装置；
Working device with automatically leveling ability at high position.
- ★ 动力换挡变速箱，二进二退档位，软轴操纵，轻便灵活；
Controlled by flexible shaft, hydraulic power shift gearbox with 2 forward and 2 reverse gears makes operate easy.

外形尺寸 Dimensions



选配 Optional

- (1) 雷沃1004-4L06发动机(56kW)
Lovol 1004-4L06 Engine, with Perkins Technology (56kW)
- (2) 东风康明斯4BTA3.9-C100(74kW)
Dongfeng Cummins 4BTA3.9-C100 engine (74kW)
- (3) 空调 Air condition
- (4) 先导操纵 Joystick control
- (5) 快换装置 Quick-hitch
- (6) 托叉 Fork

| 项目 Item | 参数值 Specification |
|---|-------------------|
| 外形尺寸(长*宽*高) Overall dimensions(LxWxH) | 5755*1960*2850 mm |
| 整机工作重量 Operating weight | 5300kg |
| 铲斗容量 Bucket capacity | 0.9m³ |
| 额定载重量 Rated load | 1800kg |
| 卸载高度 Dumping height | 2750mm |
| 卸料距离 Dumping reach | 910mm |
| 动臂提升时间 Boom lifting time | 4.5s |
| 最大掘起力 Max. breakout force | 46kN |
| 最大牵引力 Max. drawing force | 35kN |
| 最大行驶速度 Max. speed | 25km/h |
| 最大爬坡能力 Max. gradeability | 28° |
| 最小转弯半径 Min. turning radius(outside of rear wheel) | 4200mm |
| 最小离地间隙 Min. ground clearance | 330mm |
| 轴距 Wheel base | 2100mm |
| 轮距 Wheel tread | 1480mm |
| 转向角度 Steering angle | 35° |
| 轮胎规格 Tyre | 16/17-20 |
| 发动机额定功率 Engine rated power | 50kW/2200rpm |

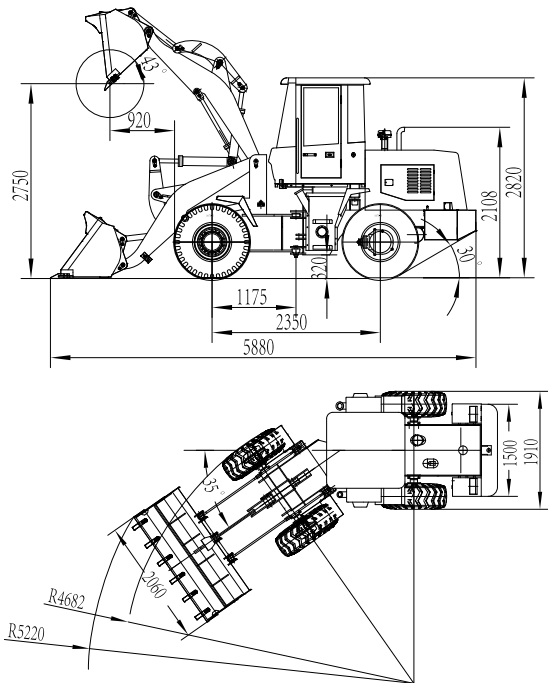
▲备注: 标准配置大车架
Remark: heavy chassis for standard



特点 Features

- ★ 采用东方红柴油机，动力强劲；
YTO LR4B3-G92XZA-u2 diesel engine is adopted, with strong power.
- ★ 动力换挡变速箱，二进二退档位，软轴操纵，轻便灵活；
Controlled by flexible shaft, hydraulic power shift gearbox with 2 forward and 2 reverse gears makes operation easy.
- ★ 具有高位自动放平性能的工作装置；
Working device with automatically leveling ability at high position.
- ★ 单泵分流工作液压系统，节能效果显著；
Single pump, split flow working hydraulic system makes lower consumption and excellent performance.
- ★ 整体式豪华仪表台；Integral, luxury instrument board.
- ★ 新型豪华驾驶室；New, luxury cabin.
- ★ 国际标准的24°锥加O型圈的双密封液压管路接头，解决了渗漏油问题；
Double sealed hydraulic pipeline joints with 24°awl and O ring of international standard, avoiding oil leakage.
- ★ 液力传动技术，单级三元件变矩器，结构简单，可靠性高；
Applying hydrodynamic transmission technology, ingle stage, 3 elements torque converter owns simple structure and high reliability.
- ★ 气顶油助力制动系统，钳盘式制动器；
Air over hydraulic brake system; Caliper disc brakes.
- ★ 负荷传感全液压转向系统，操纵轻便灵活；
Load sensing fully hydraulic steering system makes operation easy.
- ★ 铲斗铰接部位采用防尘密封润滑结构。
Bucket articulated points take sealed, lubricated, dust-proof layers, which owns good durability.

外形尺寸 Dimensions



选配 Optional

- (1) 雷沃1004-4L06发动机(60kW)
Lovol 1004-4L06 Engine, with Perkins Technology (60kW)
- (2) 东风康明斯4BTA3.9-C100(74kW)
Dongfeng Cummins 4BTA3.9-C100 engine (74kW)
- (3) 原装康明斯B3.3TAA-C80(60kW / 欧III)
Original Cummins B3.3TAA-C80 engine (60kW // Euro III)
- (4) 电控 Electric controlled gear-shfit
- (5) 空调 Air condition
- (6) 先导操纵 Joystick control
- (7) 快换装置 Quick-hitch
- (8) 托叉 Fork
- (9) 防翻滚驾驶室 ROPS

主要技术参数 Main Specification

| 项目 Item | 参数值 Specification |
|---|-------------------|
| 外形尺寸(长*宽*高) Overall dimensions(LxWxH) | 5880*2060*2820 mm |
| 整机工作重量 Operating weight | 6000kg |
| 铲斗容量 Bucket capacity | 1.1m³ |
| 额定载重量 Rated load | 2000kg |
| 卸载高度 Dumping height | 2750mm |
| 卸料距离 Dumping reach | 920mm |
| 动臂提升时间 Boom lifting time | 5s |
| 最大掘起力 Max. breakout force | 48kN |
| 最大牵引力 Max. drawing force | 45kN |
| 最大行驶速度 Max. speed | 25km/h |
| 最大爬坡能力 Max. gradeability | 30° |
| 最小转弯半径 Min. turning radius(outside of rear wheel) | 4682mm |
| 最小离地间隙 Min. ground clearance | 320mm |
| 轴距 Wheel base | 2350mm |
| 轮距 Wheel tread | 1500mm |
| 转向角度 Steering angle | 35° |
| 轮胎规格 Tyre | 16/17-20 |
| 发动机额定功率 Engine rated power | 60kW/2400rpm |

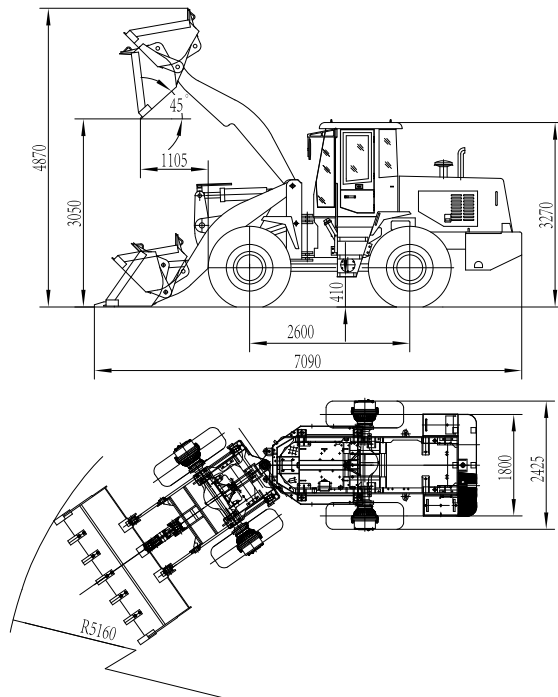
▲备注: 标准配置大车架
Remark: heavy chassis for standard



特点 Features

- ★ 国际标准的24°锥加O型圈的双密封液压管路接头，解决了渗漏油问题；
Doubly sealed hydraulic pipeline joints with 24° awl and O ring of international standard, avoided the oil leakage effectively.
- ★ 铲斗铰接部位采用防尘密封润滑结构；
Main articulated points take sealed,lubricated, double dust-proof layers, which owns good durability.
- ★ 整体式豪华仪表台；Integral, luxury instrument board.
- ★ 新型豪华驾驶室；New, luxury cabin.
- ★ 采用玉柴YC6B125-T20发动机，动力强劲；
Yuchai YC6B125-T20 high-power engine, large power storage.
- ★ 单级三元件变矩器，动力换挡变速箱，分体式结构，便于保养维护；
Single stage, 3 elements torque-converter and hydraulic power gear box, and the detached structure make easy maintenance.
- ★ 气顶油助力制动系统，钳盘式制动器；
Air over hydraulic disks on fourwheel brakes.
- ★ 具有高位自动放平性能的工作装置。
Working device with automatically leveling ability at high position.

外形尺寸 Dimensions



选配 Optional

- (1) 道依茨WP6G125E23大功率发动机
Deutz WP6G125E23 high-power engine
- (2) 东风康明斯6BT5.9-C130(97kW / 欧I)
Dongfeng Cummins 6BT5.9-C130 engine (97kW / Euro I)
- (3) 空调 Air condition
- (4) 先导操纵 Joystick control
- (5) 快换装置 Quick-hitch
- (6) 托叉 Fork
- (7) 防翻滚驾驶室 ROPS

主要技术参数 Main Specification

| 项目 Item | 参数值 Specification |
|---|-------------------|
| 外形尺寸(长*宽*高) Overall dimensions(LxWxH) | 7090*2425*3270 mm |
| 整机工作重量 Operating weight | 9800kg |
| 铲斗容量 Bucket capacity | 1.7m³ |
| 额定载重量 Rated load | 3000kg |
| 卸载高度 Dumping height | 3050mm |
| 卸料距离 Dumping reach | 1105mm |
| 动臂提升时间 Boom lifting time | 5.5s |
| 最大掘起力 Max. breakout force | 120kN |
| 最大牵引力 Max. drawing force | 90kN |
| 最大行驶速度 Max. speed | 25km/h |
| 最大爬坡能力 Max. gradeability | 30° |
| 最小转弯半径 Min. turning radius(outside of rear wheel) | 5160mm |
| 最小离地间隙 Min. ground clearance | 410mm |
| 轴距 Wheel base | 2600mm |
| 轮距 Wheel tread | 1800mm |
| 转向角度 Steering angle | 35° |
| 轮胎规格 Tyre | 17.5-25 |
| 发动机额定功率 Engine rated power | 92kW/2200rpm |

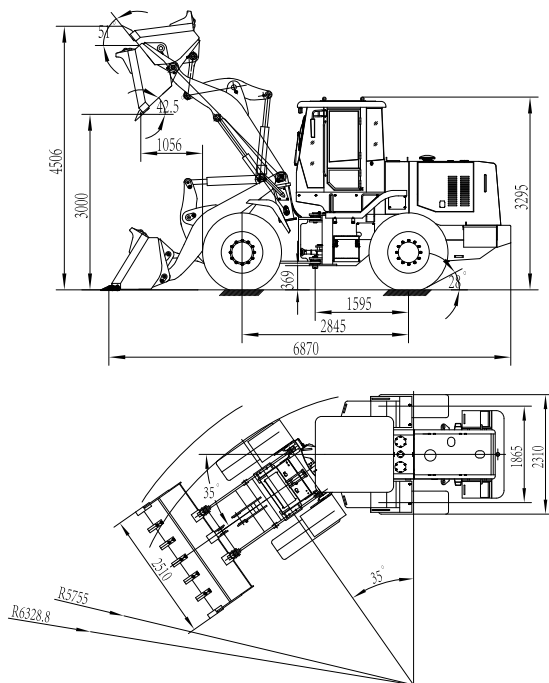
▲备注: 标准配置大车架
Remark: heavy chassis for standard



特点 Features

- ★ 全液压转向系统，操纵轻便灵活，稳定性好；
Single lever joystick control system, comfortable and flexible operation.
- ★ 气顶油助力制动系统，4轮钳盘式制动；
Air over hydraulic disks on four wheel brakes.
- ★ 国际标准的24°锥加O型圈的双密封液压管路接头，解决了渗漏油问题；
Double sealed hydraulic pipeline joints with 24°awl and O ring of international standard, avoiding oil leakage.easy.
- ★ 单泵分流工作液压系统，节能效果显著；
Single pump, split flow working hydraulic system makes lower consumption and excellent performance.
- ★ 采用潍柴道依茨DEUTZ WP6G125E23柴油机，动力强劲，性能可靠；
Weichai DEUTZ WP6G125E23 diesel engine, higher power and reliability.
- ★ 液力传动技术，单级三元件变矩器，可靠性高，便于维护保养；
Hydrodynamic transmission, three-element and single stage torque converter, high reliability, easy maintenance.
- ★ 液力传动技术，单级三元件变矩器，可靠性高，便于维护保养；
Hydrodynamic transmission, three-element and single stage torque converter, high reliability, easy maintenance.
- ★ 杭齿BS428动力换挡变速箱，传动效率高，维修方便；
Hangzhou Advance Gearbox Group BS428 power shift transmission, high efficiency and easy maintenance.
- ★ 软轴操纵换挡，轻便灵活，可靠性高；
Gear-shift controlled by flexible shaft makes operation more flexible and reliable.
- ★ 大间距铰接车架，工作、行走更稳定。
Large space articulated frames make operation and traveling stable.

外形尺寸 Dimensions



选配 Optional

- (1) 东风康明斯6BT5.9-C130(97kW / 欧I)
Dongfeng Cummins 6BT5.9-C130 engine (97kW / Euro I)
- (2) 杭齿YD13电控箱 YD13 electric control box
- (3) 空调 Air condition
- (4) 先导操纵 Joystick control
- (5) 快换装置 Quick-hitch
- (6) 托叉 Fork
- (7) 防翻滚驾驶室 ROPS

主要技术参数 Main Specification

| 项目 Item | 参数值 Specification |
|---|-------------------|
| 外形尺寸(长*宽*高) Overall dimensions(LxWxH) | 6870*2510*3295 mm |
| 整机工作重量 Operating weight | 10500kg |
| 铲斗容量 Bucket capacity | 1.8m ³ |
| 额定载重量 Rated load | 3000kg |
| 卸载高度 Dumping height | 3000mm |
| 卸料距离 Dumping reach | 1056mm |
| 动臂提升时间 Boom lifting time | 5.5s |
| 最大掘起力 Max. breakout force | 103kN |
| 最大牵引力 Max. drawing force | 90kN |
| 最大行驶速度 Max. speed | 36km/h |
| 最大爬坡能力 Max. gradeability | 28° |
| 最小转弯半径 Min. turning radius(outside of rear wheel) | 5755mm |
| 最小离地间隙 Min. ground clearance | 369mm |
| 轴距 Wheel base | 2845mm |
| 轮距 Wheel tread | 1865mm |
| 转向角度 Steering angle | 36° |
| 轮胎规格 Tyre | 17.5-25 |
| 发动机额定功率 Engine rated power | 92kW/2300rpm |

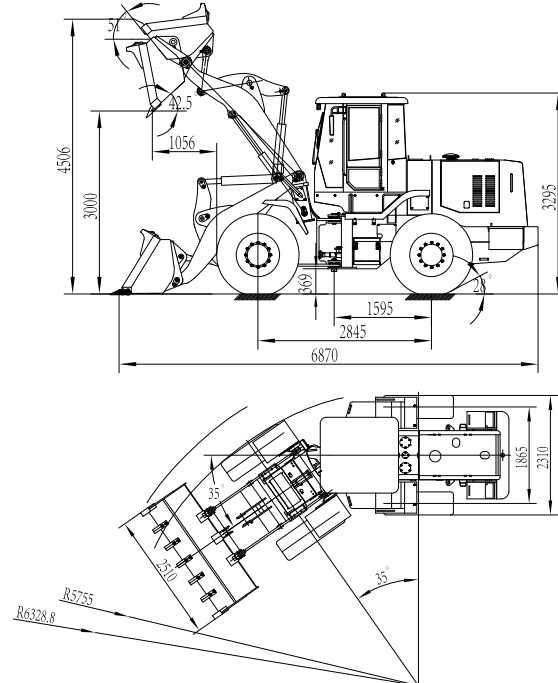
▲备注: 标准配置大车架
Remark: heavy chassis for standard



特点 Features

- ★ 国际标准的24°锥加O型圈的双密封液压管路接头，解决了渗漏油问题；
Doubly sealed hydraulic pipeline joints with 24°awl and O ring of international standard, avoided the oil leakage effectively.
- ★ 全液压转向系统，操纵轻便灵活，稳定性好；
Single lever joystick control system, comfortable and flexible operation.
- ★ 大间距铰接车架，工作、行走更稳定；Large space articulated frames make operation and traveling stable.
- ★ 气顶油助力制动系统，4轮钳盘式制动；
Air over hydraulic disks on four wheel brakes.
- ★ 采用潍柴道依茨DEUTZ WP6G125E23柴油机，动力强劲，性能可靠；
Weichai DEUTZ WP6G125E23 diesel engine, higher power and reliability.
- ★ 液力传动技术，单级三元件变矩器，可靠性高，便于维护保养；
Hydrodynamic transmission, three-element and single stage torque converter, high reliability, easy maintenance.
- ★ 杭齿BS428动力换挡变速箱，传动效率高，维修方便；
Hangzhou Advance Gearbox Group BS428 power shift transmission, high efficiency and easy maintenance.
- ★ 软轴操纵换挡，轻便灵活，可靠性高；
Gear-shift controlled by flexible shaft makes operation more flexible and reliable.
- ★ 具有高位自动放平性能的工作装置；
Working device with automatically leveling ability at high position.
- ★ 铲斗铰接部位采用防尘密封润滑结构；
Bucket articulated points take sealed, lubricated, dust-proof layers, which owns good durability.

外形尺寸 Dimensions



选配 Optional

- (1) 东风康明斯6BT5.9-C130(97kW / 欧I)
Dongfeng Cummins 6BT5.9-C130 engine (97kW / Euro I)
- (2) 杭齿YD13电控箱 YD13 electric control box
- (3) 空调 Air condition
- (4) 先导操纵 Joystick control
- (5) 快换装置 Quick-hitch
- (6) 托叉 Fork
- (7) 防翻滚驾驶室 ROPS

主要技术参数 Main Specification

| 项目 Item | 参数值 Specification |
|---|-------------------|
| 外形尺寸(长*宽*高) Overall dimensions(LxWxH) | 6870*2510*3295 mm |
| 整机工作重量 Operating weight | 10500kg |
| 铲斗容量 Bucket capacity | 1.8m ³ |
| 额定载重量 Rated load | 3000kg |
| 卸载高度 Dumping height | 3000mm |
| 卸料距离 Dumping reach | 1056mm |
| 动臂提升时间 Boom lifting time | 5.5s |
| 最大掘起力 Max. breakout force | 103kN |
| 最大牵引力 Max. drawing force | 90kN |
| 最大行驶速度 Max. speed | 36km/h |
| 最大爬坡能力 Max. gradeability | 28° |
| 最小转弯半径 Min. turning radius(outside of rear wheel) | 5755mm |
| 最小离地间隙 Min. ground clearance | 369mm |
| 轴距 Wheel base | 2845mm |
| 轮距 Wheel tread | 1865mm |
| 转向角度 Steering angle | 35° |
| 轮胎规格 Tyre | 17.5-25 |
| 发动机额定功率 Engine rated power | 92kW/2300rpm |

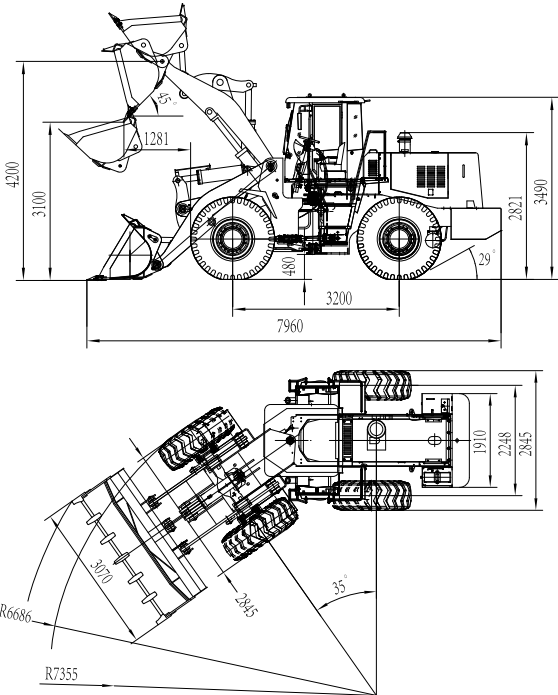
▲备注: 标准配置大车架
Remark: heavy chassis for standard

特点 Features

- ★ 双泵合流工作液压系统，节能效果显著；
Twin pump merging hydraulic system makes lower consumption and excellent performance.
- ★ 同轴流量放大全液压转向系统，操纵灵活，稳定性好；
The coaxes flow-amplified, hydraulic compensated steering makes operation easy and performance reliable.
- ★ 行走及工作液压系统强制冷却，提高工作效率；
Both travel system and working hydraulic system are forced-cooled, improving the efficiency obviously.
- ★ 气顶油助力制动系统，8个钳盘式制动器；
Air over hydraulic brake system; eight caliper disc brakes.
- ★ 断气操纵涨蹄式驻车制动及紧急制动；
Air break control, expand hoof type parking brake and emergency brake.
- ★ 采用潍柴斯太尔WD10G220E21柴油机，储备扭矩大，动力强劲；
Weichai Steyr WD10G220E21diesel engine is adopted, large torque backup and strong power.
- ★ 采用杭齿ZL50单级四元件双涡轮液力变矩器，行星式变速箱，结构紧凑，可靠性高；
Single stage, 4 elements, twin turbo ZL50 torque converter and planetary gearbox from Hangzhou Advance Gearbox Group, compact structure and high reliability.
- ★ 软轴操纵换挡，前2后1档位，操纵轻便；
Gear-shift with 2 forward and 1 reverse controlled by flexible shaft eases much labor.
- ★ 加强型驱动桥，承载力大，可靠性高。
Strengthened axles owning large bearing capacities and high reliability.



外形尺寸 Dimensions



选配 Optional

- (1) 东风康明斯6CTA8.3-C215发动机
Dongfeng Cummins 6CTA8.3-C215 engine
- (2) 空调 Air condition
- (3) 先导操纵 Joystick control
- (5) 托叉 Fork
- (4) 快换装置 Quick-hitch
- (6) 防翻滚驾驶室 ROPS

主要技术参数 Main Specification

| 项目 Item | 参数值 Specification |
|---|-------------------|
| 外形尺寸(长*宽*高) Overall dimensions(LxWxH) | 7960*3070*3490 mm |
| 整机工作重量 Operating weight | 17000kg |
| 铲斗容量 Bucket capacity | 3m³ |
| 额定载重量 Rated load | 5000kg |
| 卸载高度 Dumping height | 3100mm |
| 卸料距离 Dumping reach | 1281mm |
| 动臂提升时间 Boom lifting time | 6.8s |
| 最大掘起力 Max. breakout force | 170kN |
| 最大牵引力 Max. drawing force | 150kN |
| 最大行驶速度 Max. speed | 36km/h |
| 最大爬坡能力 Max. gradeability | 28° |
| 最小转弯半径 Min. turning radius(outside of rear wheel) | 6686mm |
| 最小离地间隙 Min. ground clearance | 480mm |
| 轴距 Wheel base | 3200mm |
| 轮距 Wheel tread | 2248mm |
| 转向角度 Steering angle | 35° |
| 轮胎规格 Tyre | 23.5-25 |
| 发动机额定功率 Engine rated power | 162kW/2200rpm |

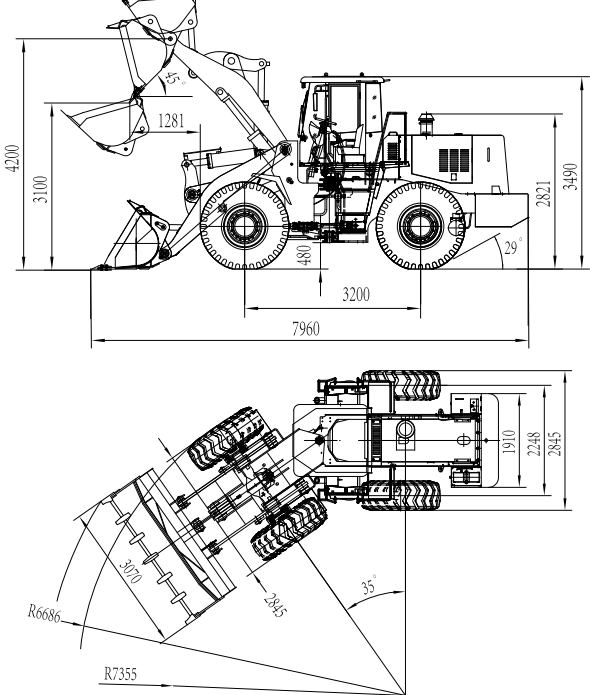
▲备注: 标准配置大车架
Remark: heavy chassis for standard

特点 Features

- ★ 行走及工作液压系统强制冷却，提高工作效率；
Both travel system and working hydraulic system are forced-cooled, improving the efficiency obviously.
- ★ 气顶油助力制动系统，钳盘式制动器；
Air over hydraulic brake system; Caliper disc brakes.
- ★ 同轴流量放大全液压转向系统，操纵灵活，稳定性好；
The coaxes flow-amplified, hydraulic compensated steering makes operation easy and performance reliable.
- ★ 加强型驱动桥，承载力大，可靠性高；
Strengthened axles own large bearing capacities and high reliability.
- ★ 双泵合流工作液压系统，节能效果显著；
Twin pump merging hydraulic system makeslower consumption and excellent performance.
- ★ 采用卡特技术生产的上柴SC11CB220G2B1发动机，储备扭矩大，动力强劲；
Shangchai Caterpillar tech SC11CB220G2B1 engine is adopted, large torque backup and strong power.
- ★ 采用ZF技术的杭齿WG180液力变速器，定轴式结构，可靠性高；
Hangzhou Advance Gear Group WG180 torque converter and fix-shaft gearbox, with ZF technology.
- ★ 电液换挡，前4后3档位，操纵轻便灵活，跳档开关，可提高作业效率；
Electro-hydraulic control, 4 forward and 3 reverse.
- ★ 大跨距，中间铰接式车架，可靠性更高；
Large space articulated frame makes operation and traveling stable.
- ★ 单手柄先导工作操纵系统，操纵舒适，轻便灵活；
Single lever pilot control system makes operation easy and comfortable.



外形尺寸 Dimensions



选配 Optional

- (1) 东风康明斯6CTA8.3-C215发动机
Dongfeng Cummins 6CTA8.3-C215 engine
- (2) 空调 Air condition
- (3) 先导操纵 Joystick control
- (5) 托叉 Fork
- (4) 快换装置 Quick-hitch
- (6) 防翻滚驾驶室 ROPS

主要技术参数 Main Specification

| 项目 Item | 参数值 Specification |
|---|-------------------|
| 外形尺寸(长*宽*高) Overall dimensions(LxWxH) | 7960*3070*3490 mm |
| 整机工作重量 Operating weight | 17000kg |
| 铲斗容量 Bucket capacity | 3m³ |
| 额定载重量 Rated load | 5000kg |
| 卸载高度 Dumping height | 3100mm |
| 卸料距离 Dumping reach | 1281mm |
| 动臂提升时间 Boom lifting time | 6.8s |
| 最大掘起力 Max. breakout force | 170kN |
| 最大牵引力 Max. drawing force | 150kN |
| 最大行驶速度 Max. speed | 38km/h |
| 最大爬坡能力 Max. gradeability | 28° |
| 最小转弯半径 Min. turning radius(outside of rear wheel) | 6686mm |
| 最小离地间隙 Min. ground clearance | 480mm |
| 轴距 Wheel base | 3200mm |
| 轮距 Wheel tread | 2248mm |
| 转向角度 Steering angle | 35° |
| 轮胎规格 Tyre | 23.5-25 |
| 发动机额定功率 Engine rated power | 162kW/2200rpm |

▲备注: 标准配置先导操纵、电控、WG180变速箱、大车架
Remark: Joystick control, electronic control, ZF TECH WG180 gearbox, heavy chassis for standard