

# Product Information: Crawler Excavator

## R 924

Litronic®



### Generation

8

### Engine

129 kW / 175 HP  
Stage V

### Operating Weight

23,400 – 25,600 kg

### Bucket Capacity

0.55 – 1.65 m<sup>3</sup>

# LIEBHERR

# Experience the Progress

## R 924

### Safety

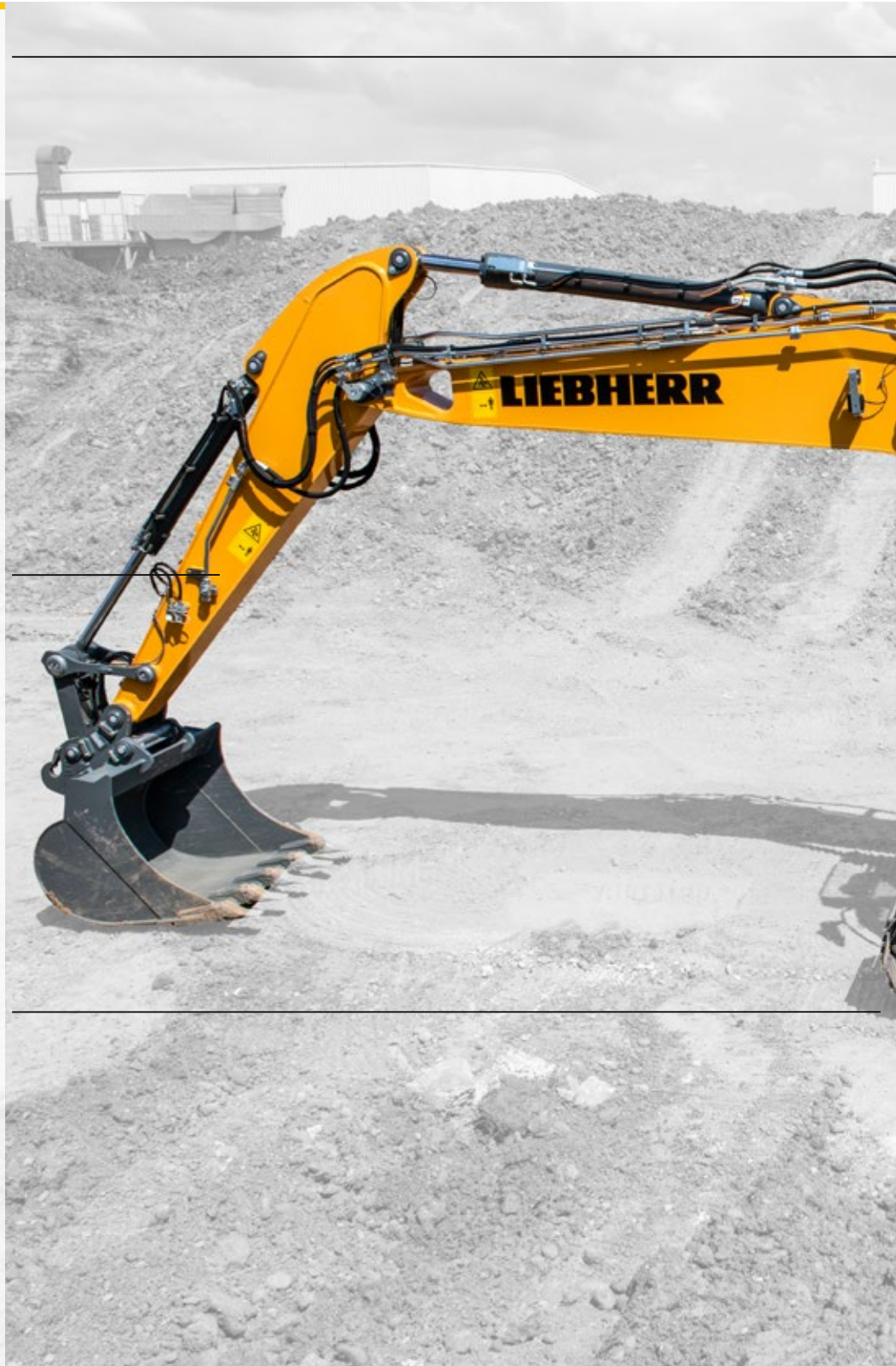
- Panoramic visibility with no obstructions and camera on the rear and the right side equipment for enhanced safety
- Lifiable console for easy and safe access to cab
- ROPS-certified cab structure: rollover protection
- Emergency exit via the rear cab window
- Right window and windshield in laminated and tinted glass

### Equipment

- Large choice of types and sizes of equipment
- Safety check valves for hoist and stick cylinders
- Longer lifespan of components and higher productivity thanks to automatic centralised lubrication system

### Undercarriage

- Robust, reliable X-frame undercarriage, easy to secure thanks to its integrated eyelets
- Easy maintenance
- Maintenance-free travel gear and track rollers with lifetime lubrication
- Extra storage as an option





### **Comfort**

- Spacious, air-conditioned work space
- Airsprung seat with vertical and horizontal suspension
- Easy-to-use high resolution 7" colour touchscreen
- Completely retractable front cab window
- New LED lighting as standard

### **Engine**

- New engine that conforms with the Stage V European exhaust emissions standard
- Automatic idle-stop

### **Maintenance**

- Innovative servicing concept, with service points accessible from ground level
- New concept for lateral access to uppercarriage and large maintenance platform
- Engine oil, hydraulic oil, fuel and urea (diesel exhaust fluid) levels visible on the display

# Technical Data



## Engine

<b>Rating per ISO 9249</b>	129 kW (175 HP) at 1,900 RPM
<b>Torque</b>	682 Nm at 1,400 RPM
<b>Model</b>	Liebherr D924 A7-05
<b>Type</b>	4 cylinder in-line
Bore	104 mm
Stroke	132 mm
Displacement	4.5 l
<b>Engine operation</b>	4-stroke diesel Common-Rail turbo-charged and after-cooler
<b>Exhaust gas treatment</b>	Stage V DOC + DPF + SCR passive regeneration by thermo management
<b>Cooling system</b>	water-cooled and oil cooler, after-cooled and fuel cooled
<b>Air cleaner</b>	dry-type air cleaner with pre-cleaner
<b>Fuel tank</b>	400 l
<b>Urea tank</b>	46 l
<b>Electrical system</b>	
Voltage	24 V
Batteries	2 x 135 Ah/ 12 V
Alternator	three-phase current 28 V/ 140 A
Engine idling	sensor controlled



## Hydraulic Controls

<b>Power distribution</b>	via control valves, simultaneous and independent actuation of chassis, swing drive and attachment
<b>Electric servo circuit</b>	electro-hydraulic control
Attachment and swing	proportional via joystick levers
Travel	– with proportionally functioning foot pedals or adjusted with plugable levers – automatic or manual speed change
<b>Additional functions</b>	proportional regulation via foot pedals or mini-joystick



## Hydraulic System

<b>Hydraulic system</b>	Positive Control dual circuit hydraulic system for independent and need-based quantity allotment via the hydraulic pumps; sensor-guided features high system dynamics and sensitivity provided by integrated system controlling
<b>Hydraulic pump</b>	
for attachment and travel drive	Liebherr, variable displacement, swashplate double pump
Max. flow	2 x 210 l/min.
Max. pressure	380 bar
<b>Pump management</b>	electronic management via the integrated system controlling (CAN-BUS) synchronous to the control block. Open circuit for the rotation
<b>Hydraulic tank</b>	155 l
<b>Hydraulic system</b>	max. 320 l
<b>Hydraulic oil filter</b>	1 main return filter with integrated partial micro filtration (10 µm)
<b>Cooling system</b>	compact cooler, consisting of a water cooler, sandwiched with hydraulic oil cooler and fuel and after-cooler cores and hydrostatically driven fan
<b>MODE selection</b>	adjustment of engine and hydraulic performance via a mode pre-selector to match application, e.g. for especially economical and environmentally friendly operation or for maximum digging performance and heavy-duty jobs
<b>Engine speed and performance setting</b>	stepless alignment of engine output and hydraulic power via engine speed



## Swing Drive

<b>Drive</b>	Liebherr swashplate motor with integrated brake valve and torque control
<b>Transmission</b>	Liebherr compact planetary reduction gears
<b>Swing ring</b>	Liebherr, sealed race ball bearing swing ring, internal teeth
<b>Swing speed</b>	0 – 12.9 RPM stepless
<b>Swing torque</b>	74.3 kNm
<b>Holding brake</b>	wet multi-disc (spring applied, pressure released)



## Operator's Cab

<b>Cab</b>	ROPS safety cab structure (roll-over protection system) with individual windscreens or featuring a slide-in subpart under the ceiling, work headlights integrated in the ceiling, a door with a sliding window (can be opened on both sides), large stowing and depositing possibilities, shock-absorbing suspension, laminated right hand side and roof windows, all windows tinted, separate extensible window shades for the sunroof window and windscreen, 24 V plug, cigarette lighter and 12 V plug, cup holder, mobile phone storage net
<b>Operator's seat</b>	Liebherr-Comfort seat, airsprung with automatic weight adjustment, vertical and longitudinal seat damping including consoles and joysticks. Seat and armrests adjustable separately and in combination (adjustable in width, height and inclination), seat heating as standard
<b>Arm consoles</b>	tiltable console left, oscillating with seat
<b>Operation and displays</b>	large high-resolution operating unit, self-explanatory, colour display with touchscreen, video-compatible, numerous settings, control and monitoring options, e.g. air conditioning control, fuel consumption, machine and tool parameters
<b>Air-conditioning</b>	automatic air-conditioning, recirculated air function, fast de-icing and demisting at the press of a button, air vents can be operated via a menu. Recirculated air and fresh air filters can be easily replaced and are accessible from the outside. Heating-cooling unit, designed for extreme outside temperatures, sensors for solar radiation, inside and outside temperatures the air conditioning system contains fluorinated greenhouse gases
Refrigerant	R134a
Global warming potential	1,430
Quantity at 25 °C*	1,260 g
CO <sub>2</sub> equivalent	1.80 t
<b>Vibration emission**</b>	
Hand/arm vibrations	< 2.5 m/s <sup>2</sup> , according with ISO 5349-1:2001
Whole-body vibrations	< 0.5 m/s <sup>2</sup>
Measuring inaccuracy	according with standard EN 12096:1997

\* valid for standard machine without operator's cab elevation and without height adjustable cab

\*\* conforms to technical report ISO/TR 25398:2006

## Undercarriage

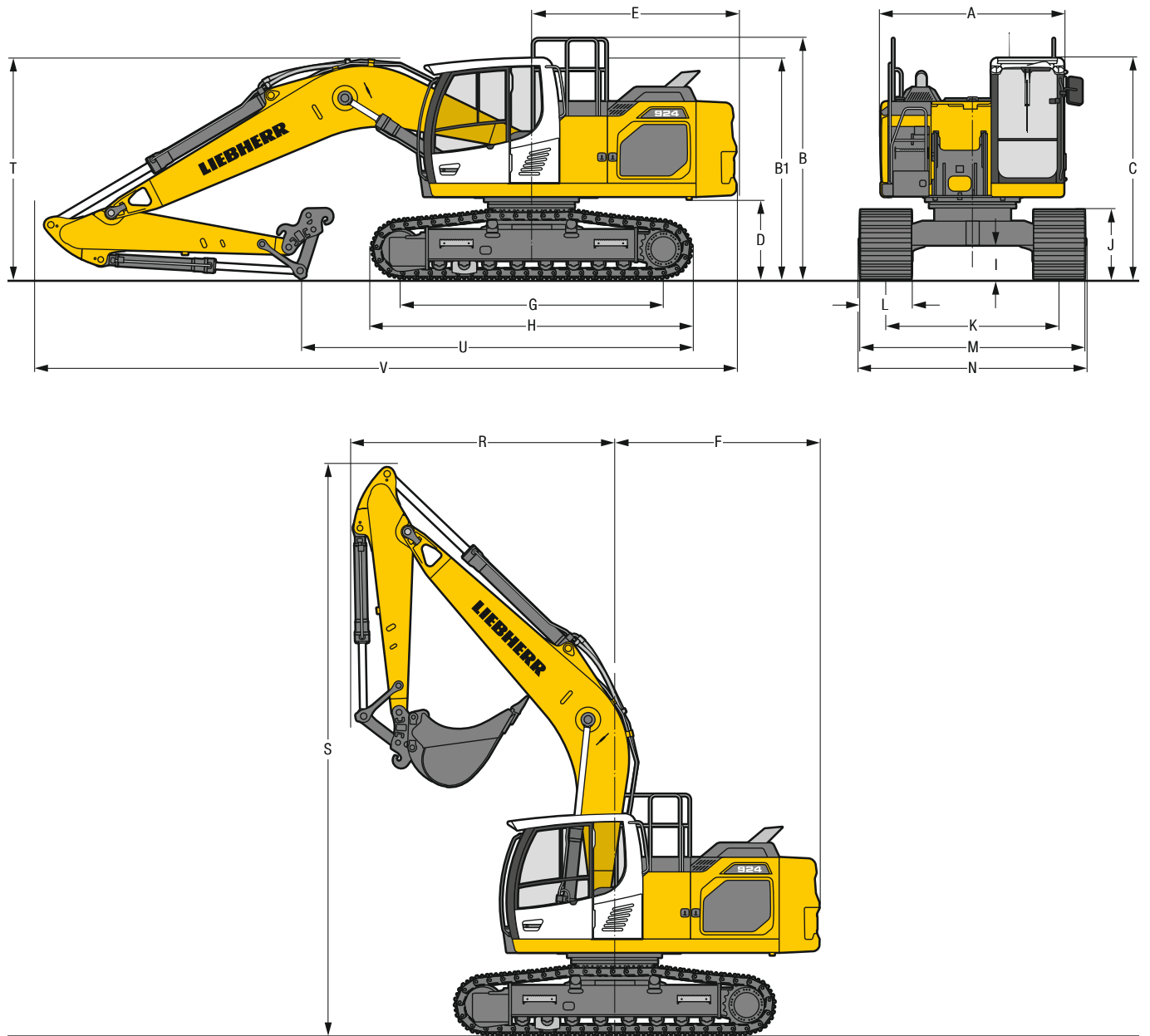
<b>Versions</b>	
NLC	gauge 2,000 mm
SLC	gauge 2,240 mm
LC	gauge 2,390 mm
WLC	gauge 2,590 mm
<b>Drive</b>	Liebherr swashplate motor with brake valves on both sides
<b>Transmission</b>	Liebherr planetary reduction gear
<b>Maximum travel speed</b>	low range 3.1 km/h high range 5.9 km/h
<b>Net drawbar pull on crawler</b>	236 kN
<b>Track components</b>	B60, D6C, maintenance-free
<b>Track rollers/Carrier rollers</b>	NLC/SLC/LC: 8/2 WLC: 9/2
<b>Tracks</b>	sealed and greased
<b>Track pads</b>	triple grouser
<b>Holding brake</b>	wet multi-disc (spring applied, pressure released)
<b>Brake valves</b>	integrated into travel motor
<b>Lashing eyes</b>	integrated



## Attachment

<b>Type</b>	combination of resistant steel plates and cast steel components
<b>Hydraulic cylinders</b>	Liebherr cylinders with special seal-system, shock protection
<b>Bearings</b>	sealed, low maintenance
<b>Lubrication</b>	Liebherr central lubrication system
<b>Hydraulic connections</b>	pipes and hoses equipped with SAE split-flange connections
<b>Buckets</b>	standard equipped with Liebherr tooth system

# Dimensions



	NLC	mm				SLC	mm				LC	mm				WLC	mm			
<b>A</b>	Upper-carriage width	2,545**					2,545**					2,545**					2,545**			
<b>B</b>	Upper-carriage height	3,335					3,335					3,335					3,335			
<b>B1</b>	Upper-carriage height (handrails folded)	3,060					3,060					3,060					3,060			
<b>C</b>	Cab height	3,060					3,060					3,060					3,060			
<b>D</b>	Counterweight ground clearance	1,100					1,100					1,100					1,100			
<b>E</b>	Rear-end length	2,830					2,830					2,830					2,830			
<b>F</b>	Tail swing radius	2,880					2,880					2,880					2,880			
<b>G</b>	Wheelbase	3,640					3,640					3,640					3,830			
<b>H</b>	Undercarriage length	4,435					4,435					4,435					4,630			
<b>I</b>	Undercarriage ground clearance	485					485					485					485			
<b>J</b>	Track height	960					960					960					960			
<b>K</b>	Track gauge	2,000					2,240					2,390					2,590			
<b>L</b>	Track pad width	500	600	750		500	600	750	900	500	600	750	900		600	750	900			
<b>M</b>	Width over tracks	2,500	2,600	2,750	2,750	2,840	2,990	3,140	3,140	2,890	2,990	3,140	3,290		3,190	3,340	3,490			
<b>N</b>	Width over steps	2,500	2,600	2,700*	2,775	2,775	2,975*	3,075*	3,075*	2,925	2,925	3,125*	3,225*		3,125	3,325*	3,425*			

\* width with removable steps

\*\* without door stop device and spacer

	Stick length m	Mono boom 5.70 m mm				Mono boom straight 5.90 m mm				Two-piece boom 5.90 m mm				Mono boom offset 5.65 m mm				
<b>R</b>	Front swing radius	2.50	3,650				3,050				2,500				3,350			
		2.90	3,650				3,050				2,600				3,350			
		3.50	3,600				2,850				2,550				3,350			
<b>S</b>	Height with boom up	7,900				8,600				8,700				7,950				
<b>T</b>	Boom height	2.50	3,050				2,850				2,800				2,900			
		2.90	3,100				3,000				2,950				2,900			
		3.50	3,050				3,050				3,050				2,900			
<b>U</b>	Length on ground	2.50	5,400/5,500*				5,900/6,000*				5,900/6,000*				8,050/8,150*			
		2.90	5,050/5,150*				5,650/5,750*				5,600/5,700*				7,650/7,750*			
		3.50	7,150/7,250*				5,000/5,100*				5,000/5,100*				7,000/7,100*			
<b>V</b>	Overall length	9,700				9,950				9,900				9,550				

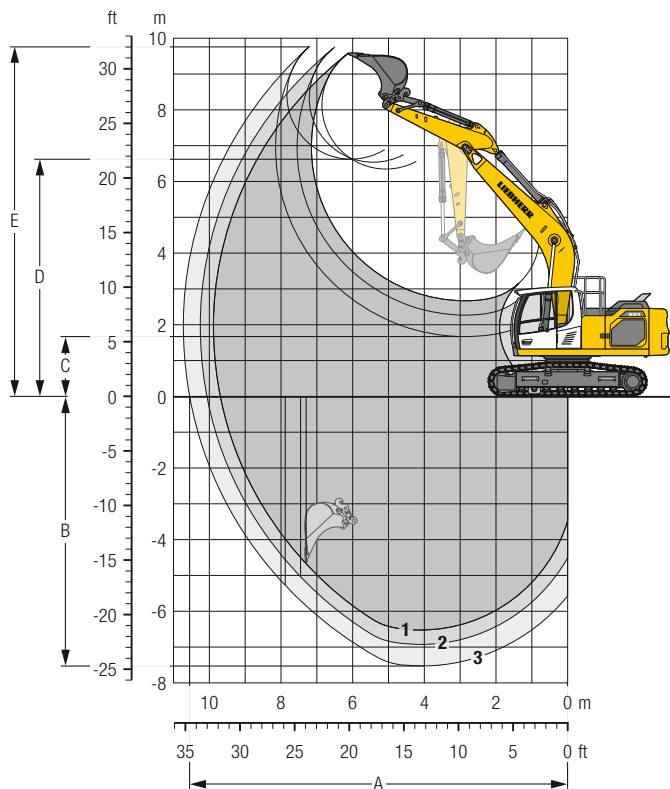
\* WLC-Undercarriage

## Transport Dimensions removable elements dismantled

	Undercarriage / Stick mm	Mono boom 5.70 m mm				Mono boom straight 5.90 m mm				Two-piece boom 5.90 m mm				Mono boom offset 5.65 m mm			
		500	600	750	900	500	600	750	900	500	600	750	900	500	600	750	900
Pad width	NLC	2,545	2,600	2,750	–	2,545	2,600	2,750	–	2,545	2,600	2,750	–	2,545	2,600	2,750	–
	SLC	2,775	2,840	2,990	3,140	2,775	2,840	2,990	3,140	2,775	2,840	2,990	3,140	2,775	2,840	2,990	3,140
	LC	2,925	2,990	3,140	3,290	2,925	2,990	3,140	3,290	2,925	2,990	3,140	3,290	2,925	2,990	3,140	3,290
	WLC	–	3,190	3,340	3,490	–	3,190	3,340	3,490	–	3,190	3,340	3,490	–	3,190	3,340	3,490
Transport length	NLC	9,700				9,950				9,900				9,550			
	SLC	9,700				9,950				9,900				9,550			
	LC	9,700				9,950				9,900				9,550			
	WLC	9,700				9,950				9,900				9,550			
Transport height	2,50	3,060				3,060				3,060				3,060			
	2,90	3,100				3,060				3,060				3,060			
	3,50	3,060				3,060				3,060				3,060			

# Backhoe Bucket

## with Mono Boom 5.70 m and Counterweight 5.0 t



### Digging Envelope

with quick coupler		1	2	3
Stick length	m	2.50	2.90	3.50
A Max. reach at ground level	m	9.69	10.07	10.55
B Max. digging depth	m	6.53	6.93	7.52
C Min. dumping height	m	2.67	2.27	1.67
D Max. dumping height	m	6.34	6.54	6.62
E Max. cutting height	m	9.54	9.75	9.76

### Forces

without quick coupler		1	2	3
Max. digging force (ISO 6015)	kN	135	122	106
Max. breakout force (ISO 6015)	kN	173	173	173
Max. digging force (SAE J1179)	kN	129	117	103
Max. breakout force (SAE J1179)	kN	151	151	151

### Operating Weight and Ground Pressure

The operating weight includes the basic machine with counterweight 5.0 t, mono boom 5.70 m, stick 2.90 m, quick coupler SWA 48 and bucket 1.25 m<sup>3</sup> (910 kg).

Undercarriage		NLC			SLC		
Pad width	mm	500	600	750	500	600	750
Weight	kg	23,400	23,650	23,800	23,500	23,750	23,900
Ground pressure	kg/cm <sup>2</sup>	0.60	0.51	0.41	0.60	0.51	0.41

Undercarriage		LC			WLC		
Pad width	mm	500	600	750	500	600	750
Weight	kg	23,600	23,850	24,000	24,000	24,300	24,700
Ground pressure	kg/cm <sup>2</sup>	0.60	0.51	0.41	0.58	0.49	0.40

### Buckets Machine stability per ISO 10567\* (75% of tipping capacity)

Cutting width	Capacity ISO 7451	Weight <sup>3)</sup>	Weight <sup>4)</sup>	NLC-Undercarriage (with track pads 500 mm)									SLC-Undercarriage (with track pads 600 mm)									LC-Undercarriage (with track pads 600 mm)									WLC-Undercarriage (with track pads 600 mm)								
				Stick length (m)									Stick length (m)									Stick length (m)									Stick length (m)								
				without quick coupler			with quick coupler			without quick coupler			with quick coupler			without quick coupler			with quick coupler			without quick coupler			with quick coupler			without quick coupler			with quick coupler								
mm	m <sup>3</sup>	kg	kg	2.50	2.90	3.50	2.50	2.90	3.50	2.50	2.90	3.50	2.50	2.90	3.50	2.50	2.90	3.50	2.50	2.90	3.50	2.50	2.90	3.50	2.50	2.90	3.50	2.50	2.90	3.50									
STD <sup>1)</sup>	650	0.55	580	590	▲	▲	▲	▲	▲	▲	▲	▲	▲	▲	▲	▲	▲	▲	▲	▲	▲	▲	▲	▲	▲	▲	▲	▲	▲	▲	▲								
	850	0.75	620	630	▲	▲	▲	▲	▲	▲	▲	▲	▲	▲	▲	▲	▲	▲	▲	▲	▲	▲	▲	▲	▲	▲	▲	▲	▲	▲	▲								
	1,050	0.95	700	710	▲	▲	■	▲	▲	■	▲	▲	▲	▲	▲	▲	▲	▲	▲	▲	▲	▲	▲	▲	▲	▲	▲	▲	▲	▲	▲								
	1,250	1.15	810	830	▲	■	▲	▲	■	■	▲	▲	■	▲	▲	■	▲	▲	▲	▲	▲	■	▲	▲	▲	▲	▲	▲	▲	▲	▲								
	1,250	1.25	890	910	■	▲	■	▲	▲	▲	▲	▲	■	▲	▲	■	▲	▲	▲	▲	▲	■	▲	▲	▲	▲	▲	▲	▲	▲	▲								
	1,400	1.35	850	880	■	▲	▲	▲	▲	▲	■	▲	▲	■	■	■	▲	■	▲	▲	■	■	▲	▲	▲	▲	▲	■	▲	▲	■								
HD <sup>2)</sup>	1,400	1.50	950	980	■	▲	▲	▲	▲	—	▲	▲	■	▲	▲	▲	■	▲	▲	▲	▲	▲	▲	■	▲	▲	▲	■	▲	▲	▲								
	1,500	1.65	1,020	1,030	▲	▲	—	▲	—	—	▲	▲	▲	■	▲	▲	▲	▲	▲	▲	■	▲	▲	▲	▲	▲	■	▲	▲	▲	▲								
	650	0.55	640	650	▲	▲	▲	▲	▲	▲	▲	▲	▲	▲	▲	▲	▲	▲	▲	▲	▲	▲	▲	▲	▲	▲	▲	▲	▲	▲	▲								
	850	0.75	695	705	▲	▲	▲	▲	▲	■	▲	▲	▲	▲	▲	▲	▲	▲	▲	▲	▲	▲	▲	▲	▲	▲	▲	▲	▲	▲	▲								
	1,050	0.95	790	800	▲	▲	■	▲	■	▲	▲	▲	▲	▲	▲	■	▲	▲	▲	▲	▲	▲	▲	▲	▲	▲	▲	▲	▲	▲	▲								
	1,250	1.15	910	940	▲	■	▲	■	■	■	▲	▲	■	▲	▲	■	▲	▲	▲	▲	▲	■	▲	▲	▲	▲	▲	▲	▲	▲	▲								
1,250	1.25	1,010	1,030	■	▲	▲	■	▲	▲	▲	■	▲	■	■	■	▲	▲	▲	▲	▲	■	▲	▲	▲	▲	▲	▲	▲	▲	■									
1,400	1.35	970	990	▲	■	▲	■	▲	—	■	▲	■	▲	■	▲	▲	■	▲	▲	■	■	▲	▲	▲	▲	▲	■	▲	▲	▲									
1,400	1.50	1,090	1,120	■	▲	—	▲	—	—	■	■	▲	■	▲	—	■	▲	■	▲	■	■	▲	■	▲	▲	■	■	▲	▲	▲									
1,500	1.65	1,160	1,160	▲	—	—	—	—	—	■	▲	—	▲	—	—	▲	■	▲	▲	▲	▲	■	▲	▲	▲	▲	■	▲	▲	▲									

\* Indicated loads are based on ISO 10567, at maximum reach, and may be swung 360° on firm and even ground  
<sup>1)</sup> Standard bucket with teeth Z 40 <sup>2)</sup> HD bucket with teeth Z 40 <sup>3)</sup> Bucket for direct mounting <sup>4)</sup> Bucket for mounting to quick coupler  
 Other buckets available upon request

Max. material weight ▲ = ≤ 2.0 t/m<sup>3</sup>, ■ = ≤ 1.8 t/m<sup>3</sup>, ▲ = ≤ 1.65 t/m<sup>3</sup>, ■ = ≤ 1.5 t/m<sup>3</sup>, ▲ = ≤ 1.2 t/m<sup>3</sup>, — = not authorised



# Lift Capacities

with Mono Boom 5.70 m, Counterweight 5.0 t and Track Pads 500 mm/600 mm

Stick 2.50 m													Stick 2.90 m														
Under-carriage	m	3.0 m		4.5 m		6.0 m		7.5 m		9.0 m		m	m	m	m	m	m	m	m	m	m	m					
		Height	Can be slewed through 360°	Can be slewed through 360°	Can be slewed through 360°	Can be slewed through 360°	Can be slewed through 360°	Can be slewed through 360°	Can be slewed through 360°	Can be slewed through 360°	Can be slewed through 360°												Can be slewed through 360°	Can be slewed through 360°	Can be slewed through 360°	Can be slewed through 360°	Can be slewed through 360°
NLC <sup>1)</sup>	7.5											5.2	6.0*	<b>5.8</b>								4.6	5.0*	<b>6.3</b>			
	6.0											3.9	5.6*	<b>7.0</b>								3.5	4.7*	<b>7.4</b>			
	4.5			7.3	7.8*	4.8	6.7*	3.4	5.9			3.2	5.5*	<b>7.7</b>			7.1*	7.1*	4.8	6.2*	3.4	5.8*	3.0	4.6*	<b>8.1</b>		
	3.0			6.7	10.0*	4.5	7.6*	3.3	5.7			2.9	5.2	<b>8.0</b>			6.7	9.3*	4.5	7.2*	3.2	5.7	2.7	4.8*	<b>8.4</b>		
	1.5			6.2	11.7*	4.3	7.8	3.1	5.6			2.8	5.0	<b>8.1</b>			6.2	11.2*	4.2	7.8	3.1	5.6	2.6	4.7	<b>8.5</b>		
	0			6.0	12.0	4.1	7.6	3.1	5.5			2.9	5.2	<b>7.9</b>			6.1*	6.1*	5.9	11.9	4.0	7.6	3.0	5.5	2.7	4.8	<b>8.2</b>
	-1.5	11.1	12.0*	6.0	12.0	4.1	7.6					3.2	5.7	<b>7.3</b>			10.8	11.3*	5.9	11.9	4.0	7.5	3.0	5.5	2.9	5.2	<b>7.7</b>
	-3.0	11.3	15.4*	6.1	11.1*	4.1	7.7					3.8	7.0	<b>6.4</b>			11.0	16.3*	5.9	11.5*	4.0	7.5	3.4	6.3	3.4	6.3	<b>6.8</b>
-4.5			6.4	8.2*							5.9	7.5*	<b>4.8</b>			11.4	12.9*	6.2	9.2*			4.8	7.3*	5.5	7.3*	<b>5.4</b>	
SLC	7.5											5.9	6.0*	<b>5.8</b>									5.0*	5.0*	<b>6.3</b>		
	6.0					5.5	6.1*					4.3	5.6*	<b>7.0</b>					5.6*	5.6*			4.0	4.7*	<b>7.4</b>		
	4.5			7.8*	7.8*	5.3	6.7*	3.8	5.9			3.7	5.5*	<b>7.7</b>			7.1*	7.1*	5.4	6.2*	3.8	5.8*	3.4	4.6*	<b>8.1</b>		
	3.0			7.6	10.0*	5.1	7.6*	3.7	5.8			3.3	5.3	<b>8.0</b>			7.7	9.3*	5.1	7.2*	3.7	5.8	3.1	4.8*	<b>8.4</b>		
	1.5			7.1	11.7*	4.8	7.9	3.6	5.7			3.2	5.1	<b>8.1</b>			7.1	11.2*	4.8	7.9	3.5	5.7	3.0	4.8	<b>8.5</b>		
	0			6.9	12.2	4.7	7.7	3.5	5.6			3.3	5.3	<b>7.9</b>			6.1*	6.1*	6.8	12.1	4.6	7.7	3.4	5.6	3.0	4.9	<b>8.2</b>
	-1.5	12.0*	12.0*	6.9	12.1	4.6	7.7					3.6	5.8	<b>7.3</b>			11.3*	11.3*	6.8	12.0	4.6	7.6	3.4	5.5	3.3	5.3	<b>7.7</b>
	-3.0	13.3	15.4*	7.0	11.1*	4.7	7.8					4.4	7.1	<b>6.4</b>			13.0	16.3*	6.8	11.5*	4.6	7.7	3.9	6.4	3.9	6.4	<b>6.8</b>
-4.5			7.3	8.2*							6.7	7.5*	<b>4.8</b>			12.9*	12.9*	7.1	9.2*			5.5	7.3*	5.5	7.3*	<b>5.4</b>	
LC	7.5											6.0*	6.0*	<b>5.8</b>									5.0*	5.0*	<b>6.3</b>		
	6.0					5.9	6.1*					4.6	5.6*	<b>7.0</b>					5.6*	5.6*			4.2	4.7*	<b>7.4</b>		
	4.5			7.8*	7.8*	5.7	6.7*	4.0	6.0			3.9	5.5*	<b>7.7</b>			7.1*	7.1*	5.7	6.2*	4.1	5.8*	3.6	4.6*	<b>8.1</b>		
	3.0			8.2	10.0*	5.4	7.6*	3.9	5.8			3.6	5.3	<b>8.0</b>			8.3	9.3*	5.4	7.2*	3.9	5.8	3.3	4.8*	<b>8.4</b>		
	1.5			7.7	11.7*	5.2	7.9	3.8	5.7			3.4	5.1	<b>8.1</b>			7.7	11.2*	5.2	7.9	3.8	5.7	3.2	4.8	<b>8.5</b>		
	0			7.5	12.2	5.0	7.8	3.7	5.6			3.5	5.3	<b>7.9</b>			6.1*	6.1*	7.4	12.2	5.0	7.7	3.7	5.6	3.3	4.9	<b>8.2</b>
	-1.5	12.0*	12.0*	7.4	12.2	5.0	7.7					3.9	5.8	<b>7.3</b>			11.3*	11.3*	7.3	12.1	4.9	7.6	3.7	5.5	3.5	5.3	<b>7.7</b>
	-3.0	14.6	15.4*	7.5	11.1*	5.1	7.8					4.7	7.2	<b>6.4</b>			14.4	16.3*	7.4	11.5*	5.0	7.7	4.2	6.4	4.2	6.4	<b>6.8</b>
-4.5			7.9	8.2*							7.2	7.5*	<b>4.8</b>			12.9*	12.9*	7.7	9.2*			5.9	7.3*	5.9	7.3*	<b>5.4</b>	
WLC	7.5											6.0*	6.0*	<b>5.8</b>									5.0*	5.0*	<b>6.3</b>		
	6.0					6.1*	6.1*					5.1	5.6*	<b>7.0</b>					5.6*	5.6*			4.6	4.7*	<b>7.4</b>		
	4.5			7.8*	7.8*	6.3	6.7*	4.5	6.2*			4.3	5.5*	<b>7.7</b>			7.1*	7.1*	6.2*	6.2*	4.5	5.8*	4.0	4.6*	<b>8.1</b>		
	3.0			9.1	10.0*	6.0	7.6*	4.4	6.4			3.9	5.7*	<b>8.0</b>			9.2	9.3*	6.0	7.2*	4.3	6.2*	3.7	4.8*	<b>8.4</b>		
	1.5			8.6	11.7*	5.8	8.5*	4.2	6.2			3.8	5.6	<b>8.1</b>			8.6	11.2*	5.7	8.2*	4.2	6.2	3.5	5.1*	<b>8.5</b>		
	0			8.4	12.4*	5.6	8.5	4.2	6.1			3.9	5.8	<b>7.9</b>			6.1*	6.1*	8.3	12.2*	5.6	8.5	4.1	6.1	3.6	5.3	<b>8.2</b>
	-1.5	12.0*	12.0*	8.4	12.2*	5.6	8.5					4.3	6.4	<b>7.3</b>			11.3*	11.3*	8.3	12.3*	5.5	8.4	4.1	6.1	3.9	5.8	<b>7.7</b>
	-3.0	15.4*	15.4*	8.5	11.1*	5.6	8.2*					5.2	7.5*	<b>6.4</b>			16.3*	16.3*	8.3	11.5*	5.5	8.4	4.7	7.0	4.7	7.0	<b>6.8</b>
-4.5			8.2*	8.2*							7.5*	7.5*	<b>4.8</b>			12.9*	12.9*	8.6	9.2*			6.6	7.3*	6.6	7.3*	<b>5.4</b>	

Height 
 Can be slewed through 360° 
 In longitudinal position of undercarriage 
 Max. reach 
 \* Limited by hydr. capacity

The load values are quoted in tons (t) at stick end (without bucket), and may be swung 360° on firm and even ground. Adjacent values are valid for the undercarriage when in the longitudinal position. Capacities are valid for 600 mm wide track pads. Indicated loads are based on ISO 10567 standard and do not exceed 75% of tipping or 87% of hydraulic capacity (indicated via \*). Without bucket cylinder, link and lever the lift capacities will increase by 325 kg. Lifting capacity of the excavator is limited by machine stability and hydraulic capacity.

According to European Standard, EN 474-5: In the European Union excavators have to be equipped with an overload warning device, a load diagram and automatic safety check valves on hoist cylinders and stick cylinder(s), when they are used for lifting operations which require the use of lifting accessories.

<sup>1)</sup> Values are calculated with 500 mm wide track pads for the NLC-Undercarriage

# Lift Capacities

with Mono Boom 5.70 m, Counterweight 5.0 t and Track Pads 500 mm/600 mm

## Stick 3.50 m

Under-carriage	3.0 m		4.5 m		6.0 m		7.5 m		9.0 m		Max. reach		
	Height	Can be slewed through 360°	In longitudinal position of undercarriage	In longitudinal position of undercarriage	In longitudinal position of undercarriage	In longitudinal position of undercarriage	In longitudinal position of undercarriage	In longitudinal position of undercarriage	In longitudinal position of undercarriage	In longitudinal position of undercarriage	Max. reach	* Limited by hydr. capacity	
NLC <sup>1)</sup>	7.5										3.9*	3.9*	<b>6.9</b>
	6.0										3.2	3.7*	<b>7.9</b>
	4.5					4.8	5.5*	3.4	5.3*		2.7	3.7*	<b>8.5</b>
	3.0	12.6	12.8*	6.9	8.2*	4.5	6.6*	3.2	5.8		2.5	3.8*	<b>8.9</b>
	1.5	6.7*	6.7*	6.3	10.4*	4.2	7.7*	3.1	5.6		2.4	4.1*	<b>8.9</b>
	0	7.8*	7.8*	5.9	11.8*	4.0	7.5	3.0	5.4		2.4	4.4	<b>8.7</b>
	-1.5	10.6	11.2*	5.7	11.7	3.9	7.4	2.9	5.4		2.6	4.7	<b>8.2</b>
	-3.0	10.7	16.2*	5.8	11.8	3.9	7.4				3.0	5.5	<b>7.4</b>
-4.5	11.1	14.7*	5.9	10.3*	4.0	7.4*				3.9	7.2*	<b>6.1</b>	
SLC	7.5										3.9*	3.9*	<b>6.9</b>
	6.0										3.6	3.7*	<b>7.9</b>
	4.5					5.4	5.5*	3.8	5.3*		3.1	3.7*	<b>8.5</b>
	3.0	12.8*	12.8*	7.8	8.2*	5.1	6.6*	3.7	5.8*		2.8	3.8*	<b>8.9</b>
	1.5	6.7*	6.7*	7.2	10.4*	4.8	7.7*	3.5	5.7		2.7	4.1*	<b>8.9</b>
	0	7.8*	7.8*	6.8	11.8*	4.6	7.7	3.4	5.5		2.7	4.4	<b>8.7</b>
	-1.5	11.2*	11.2*	6.6	11.9	4.5	7.5	3.3	5.4		2.9	4.8	<b>8.2</b>
	-3.0	12.7	16.2*	6.7	11.8*	4.5	7.5				3.4	5.6	<b>7.4</b>
-4.5	13.1	14.7*	6.8	10.3*	4.6	7.4*				4.5	7.2*	<b>6.1</b>	
LC	7.5										3.9*	3.9*	<b>6.9</b>
	6.0							4.2	4.8*		3.7*	3.7*	<b>7.9</b>
	4.5					5.5*	5.5*	4.1	5.3*		3.3	3.7*	<b>8.5</b>
	3.0	12.8*	12.8*	8.2*	8.2*	5.5	6.6*	3.9	5.8*		3.0	3.8*	<b>8.9</b>
	1.5	6.7*	6.7*	7.8	10.4*	5.2	7.7*	3.8	5.7		2.9	4.1*	<b>8.9</b>
	0	7.8*	7.8*	7.4	11.8*	4.9	7.7	3.6	5.5		2.9	4.5	<b>8.7</b>
	-1.5	11.2*	11.2*	7.2	12.0	4.8	7.5	3.6	5.5		3.2	4.8	<b>8.2</b>
	-3.0	14.0	16.2*	7.2	11.8*	4.8	7.5				3.7	5.6	<b>7.4</b>
-4.5	14.4	14.7*	7.4	10.3*	5.0	7.4*				4.8	7.2*	<b>6.1</b>	
WLC	7.5										3.9*	3.9*	<b>6.9</b>
	6.0							4.6	4.8*		3.7*	3.7*	<b>7.9</b>
	4.5					5.5*	5.5*	4.5	5.3*		3.6	3.7*	<b>8.5</b>
	3.0	12.8*	12.8*	8.2*	8.2*	6.1	6.6*	4.3	5.8*		3.3	3.8*	<b>8.9</b>
	1.5	6.7*	6.7*	8.7	10.4*	5.8	7.7*	4.2	6.2		3.2	4.1*	<b>8.9</b>
	0	7.8*	7.8*	8.3	11.8*	5.5	8.4	4.0	6.0		3.3	4.6*	<b>8.7</b>
	-1.5	11.2*	11.2*	8.1	12.2*	5.4	8.3	4.0	6.0		3.5	5.2	<b>8.2</b>
	-3.0	16.2*	16.2*	8.2	11.8*	5.4	8.3				4.1	6.1	<b>7.4</b>
-4.5	14.7*	14.7*	8.4	10.3*	5.5	7.4*				5.4	7.2*	<b>6.1</b>	

 Height 
  Can be slewed through 360° 
  In longitudinal position of undercarriage 
  Max. reach 
 \* Limited by hydr. capacity

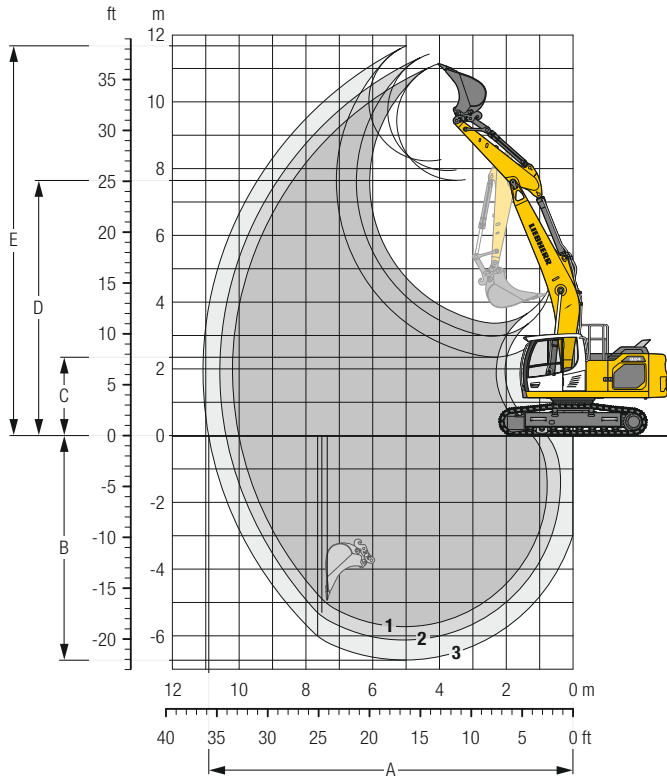
The load values are quoted in tons (t) at stick end (without bucket), and may be swung 360° on firm and even ground. Adjacent values are valid for the undercarriage when in the longitudinal position. Capacities are valid for 600 mm wide track pads. Indicated loads are based on ISO 10567 standard and do not exceed 75% of tipping or 87% of hydraulic capacity (indicated via \*). Without bucket cylinder, link and lever the lift capacities will increase by 325 kg. Lifting capacity of the excavator is limited by machine stability and hydraulic capacity.

According to European Standard, EN 474-5: In the European Union excavators have to be equipped with an overload warning device, a load diagram and automatic safety check valves on hoist cylinders and stick cylinder(s), when they are used for lifting operations which require the use of lifting accessories.

<sup>1)</sup> Values are calculated with 500 mm wide track pads for the NLC-Undercarriage

# Backhoe Bucket

## with Mono Boom Straight 5.90 m and Counterweight 5.0 t



### Digging Envelope

with quick coupler		1	2	3
Stick length	m	2.50	2.90	3.50
A Max. reach at ground level	m	10.01	10.40	10.91
B Max. digging depth	m	5.73	6.13	6.73
C Min. dumping height	m	3.37	2.98	2.35
D Max. dumping height	m	7.65	7.94	8.23
E Max. cutting height	m	11.14	11.43	11.63

### Forces

without quick coupler		1	2	3
Max. digging force (ISO 6015)	kN	135	122	106
Max. breakout force (ISO 6015)	kN	173	173	173
Max. digging force (SAE J1179)	kN	129	117	103
Max. breakout force (SAE J1179)	kN	151	151	151

### Operating Weight and Ground Pressure

The operating weight includes the basic machine with counterweight 5.0 t, mono boom straight 5.90 m, stick 2.90 m, quick coupler SWA 48 and bucket 1.25 m<sup>3</sup> (910 kg).

Undercarriage		NLC			SLC		
Pad width	mm	500	600	750	500	600	750
Weight	kg	23,400	23,650	23,800	23,500	23,750	23,900
Ground pressure	kg/cm <sup>2</sup>	0.60	0.51	0.41	0.60	0.51	0.41

Undercarriage		LC			WLC		
Pad width	mm	500	600	750	500	600	750
Weight	kg	23,600	23,850	24,000	24,000	24,300	24,700
Ground pressure	kg/cm <sup>2</sup>	0.60	0.51	0.41	0.58	0.49	0.40

### Buckets Machine stability per ISO 10567\* (75% of tipping capacity)

	Cutting width mm	Capacity ISO 7451 m <sup>3</sup>	Weight <sup>2)</sup> kg	Weight <sup>4)</sup> kg	NLC-Undercarriage (with track pads 500 mm)									SLC-Undercarriage (with track pads 600 mm)									LC-Undercarriage (with track pads 600 mm)									WLC-Undercarriage (with track pads 600 mm)								
					Stick length (m)			Stick length (m)			Stick length (m)			Stick length (m)			Stick length (m)			Stick length (m)																				
					without quick coupler	with quick coupler		without quick coupler	with quick coupler		without quick coupler	with quick coupler		without quick coupler	with quick coupler		without quick coupler	with quick coupler		without quick coupler	with quick coupler																			
	2.50	2.90	3.50	2.50	2.90	3.50	2.50	2.90	3.50	2.50	2.90	3.50	2.50	2.90	3.50	2.50	2.90	3.50	2.50	2.90	3.50	2.50	2.90	3.50																
STD <sup>1)</sup>	650	0.55	580	590	▲	▲	▲	▲	▲	▲	▲	▲	▲	▲	▲	▲	▲	▲	▲	▲	▲	▲	▲	▲	▲	▲														
	850	0.75	620	630	▲	▲	■	▲	▲	▲	▲	▲	▲	▲	▲	▲	▲	▲	▲	▲	▲	▲	▲	▲	▲	▲														
	1,050	0.95	700	710	▲	■	▲	▲	■	▲	▲	▲	▲	▲	▲	▲	▲	▲	▲	▲	▲	▲	▲	▲	▲	▲														
	1,250	1.15	810	830	■	▲	■	■	▲	▲	▲	▲	▲	▲	▲	▲	▲	▲	▲	▲	▲	▲	▲	▲	▲	▲														
	1,250	1.25	890	910	▲	▲	▲	▲	▲	▲	▲	▲	▲	▲	▲	▲	▲	▲	▲	▲	▲	▲	▲	▲	▲	▲														
	1,400	1.35	850	880	■	▲	▲	▲	▲	▲	▲	▲	▲	▲	▲	▲	▲	▲	▲	▲	▲	▲	▲	▲	▲	▲														
HD <sup>2)</sup>	1,400	1.50	950	980	▲	▲	–	▲	–	–	▲	▲	▲	▲	▲	▲	▲	▲	▲	▲	▲	▲	▲	▲	▲															
	1,500	1.65	1,020	1,030	▲	–	–	–	–	–	▲	▲	–	▲	–	–	▲	▲	▲	▲	▲	▲	▲	▲	▲															
	650	0.55	640	650	▲	▲	▲	▲	▲	▲	▲	▲	▲	▲	▲	▲	▲	▲	▲	▲	▲	▲	▲	▲	▲															
	850	0.75	695	705	▲	▲	■	▲	■	▲	▲	▲	▲	▲	▲	▲	▲	▲	▲	▲	▲	▲	▲	▲	▲															
	1,050	0.95	790	800	▲	■	▲	■	■	▲	▲	▲	▲	▲	▲	▲	▲	▲	▲	▲	▲	▲	▲	▲	▲															
	1,250	1.15	910	940	■	▲	▲	▲	■	▲	▲	▲	▲	▲	▲	▲	▲	▲	▲	▲	▲	▲	▲	▲	▲															

\* Indicated loads are based on ISO 10567, at maximum reach, and may be swung 360° on firm and even ground  
<sup>1)</sup> Standard bucket with teeth Z 40 <sup>2)</sup> HD bucket with teeth Z 40 <sup>3)</sup> Bucket for direct mounting <sup>4)</sup> Bucket for mounting to quick coupler  
 Other buckets available upon request

Max. material weight ▲ = ≤ 2.0 t/m<sup>3</sup>, ■ = ≤ 1.8 t/m<sup>3</sup>, ▲ = ≤ 1.65 t/m<sup>3</sup>, ■ = ≤ 1.5 t/m<sup>3</sup>, ▲ = ≤ 1.2 t/m<sup>3</sup>, – = not authorised

# Lift Capacities

with Mono Boom Straight 5.90 m, Counterweight 5.0 t and Track Pads 500 mm/600 mm

### Stick 2.50 m

Under-carriage	m	3.0 m		4.5 m		6.0 m		7.5 m		9.0 m		Max. reach		
		Can be slewed through 360°	In longitudinal position of undercarriage	Can be slewed through 360°	In longitudinal position of undercarriage	Can be slewed through 360°	In longitudinal position of undercarriage	Can be slewed through 360°	In longitudinal position of undercarriage	Can be slewed through 360°	In longitudinal position of undercarriage	Max. reach	* Limited by hydr. capacity	
NLC <sup>1)</sup>	9.0											7.5*	7.5*	4.4
	7.5											4.6	6.1*	6.2
	6.0			7.8	7.8*	4.9	7.2*					3.5	5.6*	7.3
	4.5			7.5	8.3*	4.8	7.2*					3.0	5.2	8.0
	3.0			7.1	9.7*	4.6	7.8*	3.3	5.8			2.7	4.8	8.3
	1.5			6.5	11.4*	4.4	8.0	3.2	5.7			2.7	4.7	8.4
	0			6.0	12.1	4.2	7.7	3.1	5.6			2.7	4.7	8.4
	-1.5	9.0*	9.0*	5.9	11.1*	4.0	7.5	3.0	5.5			2.7	4.9	8.2
	-3.0			6.1	9.1*	4.1	6.9*					3.0	5.3	7.7
-4.5												3.6	5.5*	6.8
SLC	9.0											7.5*	7.5*	4.4
	7.5			7.8*	7.8*	5.5	7.2*					5.1	6.1*	6.2
	6.0			8.3*	8.3*	5.4	7.2*					3.9	5.6*	7.3
	4.5			8.0	9.7*	5.2	7.8*	3.7	5.9			3.4	5.3	8.0
	3.0			7.4	11.4*	5.0	8.1	3.6	5.8			3.1	4.9	8.3
	1.5			6.9	12.2	4.7	7.8	3.5	5.6			3.0	4.8	8.4
	0			6.8	12.1	4.6	7.7	3.4	5.6			3.1	4.9	8.2
	-1.5	9.0*	9.0*	6.8	11.1*	4.6	7.6	3.5	5.6			3.4	5.4	7.7
	-3.0			7.0	9.1*	4.7	6.9*					4.0	5.5*	6.8
-4.5														
LC	9.0											7.5*	7.5*	4.4
	7.5			7.8*	7.8*	5.8	7.2*					5.5	6.1*	6.2
	6.0			8.3*	8.3*	5.8	7.2*					4.2	5.6*	7.3
	4.5			8.6	9.7*	5.6	7.8*	4.0	5.9			3.6	5.3	8.0
	3.0			8.0	11.4*	5.3	8.1	3.9	5.8			3.3	4.9	8.3
	1.5			7.5	12.3	5.1	7.8	3.8	5.7			3.2	4.8	8.4
	0			7.4	12.1	5.0	7.7	3.7	5.6			3.3	5.0	8.2
	-1.5	9.0*	9.0*	7.4	11.1*	4.9	7.7	3.7	5.6			3.6	5.4	7.7
	-3.0			7.5	9.1*	5.0	6.9*					4.3	5.5*	6.8
-4.5														
WLC	9.0											7.5*	7.5*	4.4
	7.5			7.8*	7.8*	6.4	7.2*					6.0	6.1*	6.2
	6.0			8.3*	8.3*	6.4	7.2*					4.6	5.6*	7.3
	4.5			9.6	9.7*	6.2	7.8*	4.4	6.4			4.0	5.5*	8.0
	3.0			8.9	11.4*	5.9	8.5*	4.3	6.3			3.7	5.4	8.3
	1.5			8.4	12.4*	5.7	8.6	4.2	6.2			3.6	5.2	8.4
	0			8.3	12.2*	5.5	8.4	4.1	6.1			3.7	5.4	8.2
	-1.5	9.0*	9.0*	8.3	11.1*	5.5	8.4	4.1	6.1			4.0	5.9	7.7
	-3.0			8.5	9.1*	5.6	6.9*					4.8	5.5*	6.8
-4.5														

### Stick 2.90 m

Under-carriage	m	3.0 m		4.5 m		6.0 m		7.5 m		9.0 m		Max. reach		
		Can be slewed through 360°	In longitudinal position of undercarriage	Can be slewed through 360°	In longitudinal position of undercarriage	Can be slewed through 360°	In longitudinal position of undercarriage	Can be slewed through 360°	In longitudinal position of undercarriage	Can be slewed through 360°	In longitudinal position of undercarriage	Max. reach	* Limited by hydr. capacity	
NLC <sup>1)</sup>	9.0											6.1*	6.1*	5.1
	7.5											4.0	5.1*	6.7
	6.0			7.3*	7.3*	4.9	6.7*					3.2	4.8*	7.8
	4.5	12.9*	12.9*	7.2	9.1*	4.7	7.4*	3.3	5.8			2.7	4.6*	8.4
	3.0			6.5	10.9*	4.4	8.0	3.2	5.7			2.5	4.5	8.7
	1.5			6.0	12.1	4.1	7.7	3.1	5.5			2.4	4.4	8.8
	0			5.8	11.8	4.0	7.5	3.0	5.4			2.5	4.5	8.6
	-1.5	8.7*	8.7*	5.8	11.4*	3.9	7.4	3.0	5.4			2.7	4.9	8.1
	-3.0	11.1	12.3*	5.9	9.7*	4.0	7.4*					3.2	5.3*	7.3
-4.5														
SLC	9.0											6.1*	6.1*	5.1
	7.5			7.3*	7.3*							4.5	5.1*	6.7
	6.0			7.0*	7.0*	5.5	6.7*					3.6	4.8*	7.8
	4.5	12.9*	12.9*	8.1	9.1*	5.3	7.4*	3.7	5.9			3.1	4.6*	8.4
	3.0			7.5	10.9*	5.0	8.1	3.6	5.7			2.9	4.6	8.7
	1.5			6.9	12.2*	4.7	7.8	3.5	5.6			2.8	4.5	8.8
	0			6.7	12.0	4.5	7.6	3.4	5.5			2.8	4.6	8.6
	-1.5	8.7*	8.7*	6.7	11.4*	4.5	7.5	3.4	5.5			3.1	5.0	8.1
	-3.0	12.3*	12.3*	6.8	9.7*	4.6	7.4*					3.6	5.3*	7.3
-4.5														
LC	9.0											6.1*	6.1*	5.1
	7.5			7.3*	7.3*							4.8	5.1*	6.7
	6.0			7.0*	7.0*	5.8	6.8*	4.1	6.0*			3.8	4.8*	7.8
	4.5	12.9*	12.9*	8.7	9.1*	5.6	7.4*	4.0	5.9			3.3	4.6*	8.4
	3.0			8.0	10.9*	5.3	8.1	3.9	5.8			3.1	4.6	8.7
	1.5			7.5	12.2*	5.1	7.8	3.7	5.6			3.0	4.5	8.8
	0			7.3	12.0	4.9	7.6	3.6	5.5			3.1	4.6	8.6
	-1.5	8.7*	8.7*	7.3	11.4*	4.9	7.6	3.6	5.5			3.3	5.0	8.1
	-3.0	12.3*	12.3*	7.4	9.7*	4.9	7.4*					3.9	5.3*	7.3
-4.5														
WLC	9.0											6.1*	6.1*	5.1
	7.5			7.3*	7.3*							5.1*	5.1*	6.7
	6.0			7.0*	7.0*	6.4	6.8*	4.5	6.0*			4.2	4.8*	7.8
	4.5	12.9*	12.9*	9.1*	9.1*	6.2	7.4*	4.4	6.4			3.7	4.6*	8.4
	3.0			9.0	10.9*	5.9	8.2*	4.3	6.3			3.4	4.7*	8.7
	1.5			8.5	12.2*	5.6	8.6	4.1	6.1			3.3	4.9	8.8
	0			8.2	12.3*	5.5	8.4	4.1	6.0			3.4	5.0	8.6
	-1.5	8.7*	8.7*	8.2	11.4*	5.4	8.3	4.0	6.0			3.7	5.4	8.1
	-3.0	12.3*	12.3*	8.3	9.7*	5.5	7.4*					4.3	5.3*	7.3
-4.5														

Height
 Can be slewed through 360°
 In longitudinal position of undercarriage
 Max. reach
 \* Limited by hydr. capacity

The load values are quoted in tons (t) at stick end (without bucket), and may be swung 360° on firm and even ground. Adjacent values are valid for the undercarriage when in the longitudinal position. Capacities are valid for 600 mm wide track pads. Indicated loads are based on ISO 10567 standard and do not exceed 75% of tipping or 87% of hydraulic capacity (indicated via \*). Without bucket cylinder, link and lever the lift capacities will increase by 325 kg. Lifting capacity of the excavator is limited by machine stability and hydraulic capacity.

According to European Standard, EN 474-5: In the European Union excavators have to be equipped with an overload warning device, a load diagram and automatic safety check valves on hoist cylinders and stick cylinder(s), when they are used for lifting operations which require the use of lifting accessories.

<sup>1)</sup> Values are calculated with 500 mm wide track pads for the NLC-Undercarriage

## Stick 3.50 m

Under-carriage	3.0 m		4.5 m		6.0 m		7.5 m		9.0 m		Max. reach			
	Height	Can be slewed through 360°	Height	Can be slewed through 360°	Height	Can be slewed through 360°	Height	Can be slewed through 360°	Height	Can be slewed through 360°	Max. reach	Max. reach		
NLC <sup>1)</sup>	9.0				5.0	5.7*					4.5*	4.5*	<b>5.9</b>	
	7.5				5.0	6.0*	3.4	5.5*			3.5	3.9*	<b>7.4</b>	
	6.0				5.0	6.0*	3.4	5.5*			2.8	3.7*	<b>8.3</b>	
	4.5			7.1*	7.1*	4.7	6.9*	3.3	5.8			2.5	3.7*	<b>8.9</b>
	3.0			6.7	10.1*	4.4	7.7*	3.2	5.7	2.4	4.3	2.3	3.7*	<b>9.2</b>
	1.5			6.1	11.6*	4.1	7.7	3.0	5.5	2.3	4.2	2.2	3.9*	<b>9.3</b>
	0	5.4*	5.4*	5.8	11.8	3.9	7.4	2.9	5.4	2.3	4.1	2.2	4.1	<b>9.1</b>
	-1.5	8.9*	8.9*	5.7	11.6	3.8	7.3	2.9	5.3			2.4	4.4	<b>8.6</b>
	-3.0	10.7	13.8*	5.7	10.5*	3.8	7.4	2.9	5.4			2.7	5.0	<b>7.9</b>
	-4.5			5.9	7.9*	4.0	5.8*					3.5	4.7*	<b>6.7</b>
SLC	9.0				5.6	5.7*					4.5*	4.5*	<b>5.9</b>	
	7.5				5.6	6.0*	3.9	5.5*			3.9*	3.9*	<b>7.4</b>	
	6.0				5.6	6.0*	3.9	5.5*			3.2	3.7*	<b>8.3</b>	
	4.5			7.1*	7.1*	5.3	6.9*	3.8	5.9			2.8	3.7*	<b>8.9</b>
	3.0			7.6	10.1*	5.0	7.7*	3.6	5.7	2.7	4.3	2.6	3.7*	<b>9.2</b>
	1.5			7.0	11.6*	4.7	7.8	3.4	5.6	2.6	4.3	2.5	3.9*	<b>9.3</b>
	0	5.4*	5.4*	6.7	11.9	4.5	7.6	3.3	5.4	2.6	4.2	2.6	4.1	<b>9.1</b>
	-1.5	8.9*	8.9*	6.6	11.8*	4.4	7.4	3.3	5.4			2.7	4.5	<b>8.6</b>
	-3.0	12.7	13.8*	6.6	10.5*	4.4	7.5	3.3	5.4			3.1	5.1	<b>7.9</b>
	-4.5			6.8	7.9*	4.6	5.8*					4.0	4.7*	<b>6.7</b>
LC	9.0				5.7*	5.7*					4.5*	4.5*	<b>5.9</b>	
	7.5				5.9	6.0*	4.1	5.5*			3.9*	3.9*	<b>7.4</b>	
	6.0				5.9	6.0*	4.1	5.5*			3.4	3.7*	<b>8.3</b>	
	4.5			7.1*	7.1*	5.7	6.9*	4.0	5.9			3.0	3.7*	<b>8.9</b>
	3.0			8.2	10.1*	5.4	7.7*	3.9	5.8	2.9	4.3	2.8	3.7*	<b>9.2</b>
	1.5			7.6	11.6*	5.1	7.8	3.7	5.6	2.8	4.3	2.7	3.9*	<b>9.3</b>
	0	5.4*	5.4*	7.2	12.0	4.8	7.6	3.6	5.5	2.8	4.2	2.7	4.2	<b>9.1</b>
	-1.5	8.9*	8.9*	7.1	11.8*	4.8	7.5	3.5	5.4			2.9	4.5	<b>8.6</b>
	-3.0	13.8*	13.8*	7.2	10.5*	4.8	7.5	3.6	5.5			3.4	5.1	<b>7.9</b>
	-4.5			7.4	7.9*	4.9	5.8*					4.3	4.7*	<b>6.7</b>
WLC	9.0				5.7*	5.7*					4.5*	4.5*	<b>5.9</b>	
	7.5				6.0*	6.0*	4.5	5.5*			3.9*	3.9*	<b>7.4</b>	
	6.0				6.0*	6.0*	4.5	5.5*			3.7*	3.7*	<b>8.3</b>	
	4.5			7.1*	7.1*	6.3	6.9*	4.4	6.1*			3.3	3.7*	<b>8.9</b>
	3.0			9.2	10.1*	6.0	7.7*	4.3	6.3	3.2	4.7	3.1	3.7*	<b>9.2</b>
	1.5			8.5	11.6*	5.6	8.5*	4.1	6.1	3.2	4.7	3.0	3.9*	<b>9.3</b>
	0	5.4*	5.4*	8.2	12.2*	5.4	8.3	4.0	6.0	3.1	4.6	3.1	4.3*	<b>9.1</b>
	-1.5	8.9*	8.9*	8.1	11.8*	5.3	8.2	3.9	5.9			3.3	4.9	<b>8.6</b>
	-3.0	13.8*	13.8*	8.1	10.5*	5.3	7.9*	4.0	5.9*			3.8	5.3*	<b>7.9</b>
	-4.5			7.9*	7.9*	5.5	5.8*					4.7*	4.7*	<b>6.7</b>

 **Height**
 **Can be slewed through 360°**
 **In longitudinal position of undercarriage**
 **Max. reach**
 \* Limited by hydr. capacity

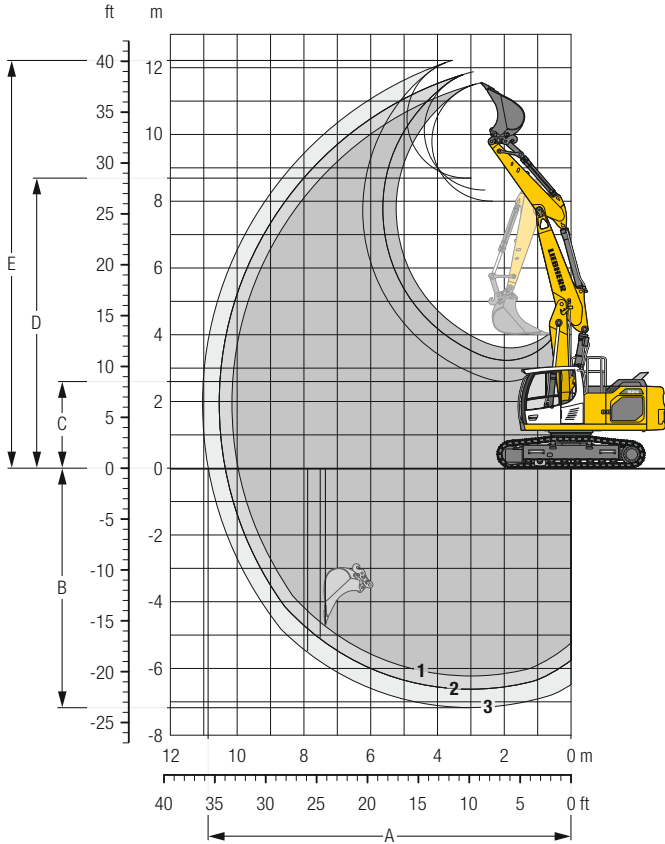
The load values are quoted in tons (t) at stick end (without bucket), and may be swung 360° on firm and even ground. Adjacent values are valid for the undercarriage when in the longitudinal position. Capacities are valid for 600 mm wide track pads. Indicated loads are based on ISO 10567 standard and do not exceed 75 % of tipping or 87 % of hydraulic capacity (indicated via \*). Without bucket cylinder, link and lever the lift capacities will increase by 325 kg. Lifting capacity of the excavator is limited by machine stability and hydraulic capacity.

According to European Standard, EN 474-5: In the European Union excavators have to be equipped with an overload warning device, a load diagram and automatic safety check valves on hoist cylinders and stick cylinder(s), when they are used for lifting operations which require the use of lifting accessories.

<sup>1)</sup> Values are calculated with 500 mm wide track pads for the NLC-Undercarriage

# Backhoe Bucket

## with Two-Piece Boom 5.90 m and Counterweight 5.0 t



### Digging Envelope

with quick coupler		1	2	3
Stick length	m	2.50	2.90	3.50
A Max. reach at ground level	m	9.97	10.36	10.87
B Max. digging depth	m	6.23	6.62	7.17
C Min. dumping height	m	3.61	3.23	2.60
D Max. dumping height	m	8.00	8.33	8.69
E Max. cutting height	m	11.55	11.88	12.22

### Forces

without quick coupler		1	2	3
Max. digging force (ISO 6015)	kN	135	122	106
Max. breakout force (ISO 6015)	kN	173	173	173
Max. digging force (SAE J1179)	kN	129	117	103
Max. breakout force (SAE J1179)	kN	151	151	151

### Operating Weight and Ground Pressure

The operating weight includes the basic machine with counterweight 5.0 t, two-piece boom 5.90 m, stick 2.90 m, quick coupler SWA 48 and bucket 1.25 m<sup>3</sup> (910 kg).

Undercarriage		NLC			SLC		
Pad width	mm	500	600	750	500	600	750
Weight	kg	24,100	24,350	24,500	24,200	24,450	24,600
Ground pressure	kg/cm <sup>2</sup>	0.62	0.52	0.42	0.62	0.52	0.42

Undercarriage		LC			WLC		
Pad width	mm	500	600	750	500	600	750
Weight	kg	24,300	24,550	24,700	24,700	25,000	25,400
Ground pressure	kg/cm <sup>2</sup>	0.62	0.52	0.42	0.60	0.51	0.41

### Buckets Machine stability per ISO 10567\* (75% of tipping capacity)

	Cutting width mm	Capacity ISO 7451 m <sup>3</sup>	Weight <sup>3)</sup> kg	Weight <sup>4)</sup> kg	NLC-Undercarriage (with track pads 500 mm)									SLC-Undercarriage (with track pads 600 mm)									LC-Undercarriage (with track pads 600 mm)									WLC-Undercarriage (with track pads 600 mm)								
					Stick length (m)			Stick length (m)			Stick length (m)			Stick length (m)			Stick length (m)			Stick length (m)			Stick length (m)																	
					without quick coupler	with quick coupler		without quick coupler	with quick coupler		without quick coupler	with quick coupler		without quick coupler	with quick coupler		without quick coupler	with quick coupler		without quick coupler	with quick coupler																			
2.50	2.90	3.50	2.50	2.90	3.50	2.50	2.90	3.50	2.50	2.90	3.50	2.50	2.90	3.50	2.50	2.90	3.50	2.50	2.90	3.50	2.50	2.90	3.50																	
STD <sup>1)</sup>	650	0.55	580	590	▲	▲	▲	▲	▲	▲	▲	▲	▲	▲	▲	▲	▲	▲	▲	▲	▲	▲	▲	▲	▲	▲														
	850	0.75	620	630	▲	▲	■	▲	▲	▲	▲	▲	▲	▲	▲	▲	▲	▲	▲	▲	▲	▲	▲	▲	▲	▲														
	1,050	0.95	700	710	▲	■	▲	▲	■	▲	▲	▲	▲	▲	▲	▲	▲	▲	▲	▲	▲	▲	▲	▲	▲	▲														
	1,250	1.15	810	830	■	▲	■	■	■	△	▲	▲	■	▲	▲	▲	▲	▲	▲	▲	▲	▲	▲	▲	▲	▲														
	1,250	1.25	890	910	▲	▲	△	▲	△	△	▲	▲	■	▲	■	▲	■	▲	■	▲	■	▲	■	▲	■	▲														
HD <sup>2)</sup>	1,400	1.35	850	880	■	△	△	△	△	-	▲	■	△	▲	▲	△	■	▲	■	▲	■	▲	■	▲	■	▲														
	1,400	1.50	950	980	△	△	-	△	-	-	■	△	△	■	△	-	▲	■	△	▲	■	△	■	▲	■	▲														
	1,500	1.65	1,020	1,030	△	-	-	-	-	-	△	△	-	△	-	-	▲	△	△	■	△	-	■	△	■	△														
	650	0.55	640	650	▲	▲	▲	▲	▲	■	▲	▲	▲	▲	▲	▲	▲	▲	▲	▲	▲	▲	▲	▲	▲	▲														
	850	0.75	695	705	▲	▲	■	▲	■	▲	▲	▲	▲	▲	▲	▲	▲	▲	▲	▲	▲	▲	▲	▲	▲	▲														
HD <sup>2)</sup>	1,050	0.95	790	800	▲	■	▲	■	■	▲	▲	▲	▲	▲	▲	▲	▲	▲	▲	▲	▲	▲	▲	▲	▲	▲														
	1,250	1.15	910	940	■	▲	△	▲	△	△	▲	■	■	■	■	■	■	■	■	■	■	■	■	■	■	■														
	1,250	1.25	1,010	1,030	▲	△	△	■	△	-	■	▲	■	▲	■	△	▲	■	▲	■	▲	■	▲	■	▲	■														
	1,400	1.35	970	990	■	△	-	△	-	-	▲	■	△	▲	■	△	-	■	▲	■	▲	■	▲	■	▲	■														
	1,400	1.50	1,090	1,120	△	-	-	-	-	-	▲	△	-	△	-	-	■	▲	■	▲	■	▲	■	▲	■	▲														
1,500	1.65	1,160	1,160	-	-	-	-	-	-	△	-	-	-	-	-	■	△	-	△	-	-	▲	■	△	-															

\* Indicated loads are based on ISO 10567, at maximum reach, and may be swung 360° on firm and even ground  
<sup>1)</sup> Standard bucket with teeth Z 40 <sup>2)</sup> HD bucket with teeth Z 40 <sup>3)</sup> Bucket for direct mounting <sup>4)</sup> Bucket for mounting to quick coupler  
 Other buckets available upon request

Max. material weight ▲ = ≤ 2.0 t/m<sup>3</sup>, ■ = ≤ 1.8 t/m<sup>3</sup>, ▲ = ≤ 1.65 t/m<sup>3</sup>, ■ = ≤ 1.5 t/m<sup>3</sup>, △ = ≤ 1.2 t/m<sup>3</sup>, - = not authorised



# Lift Capacities

with Two-Piece Boom 5.90 m, Counterweight 5.0 t and Track Pads 500 mm/600 mm

## Stick 3.50 m

Under-carriage	3.0 m		4.5 m		6.0 m		7.5 m		9.0 m		Max. reach			
	Height	Can be slewed through 360°	Height	Can be slewed through 360°	Height	Can be slewed through 360°	Height	Can be slewed through 360°	Height	Can be slewed through 360°	Max. reach	Max. reach		
NLC <sup>1)</sup>	9.0		6.0*	6.0*							4.5*	4.5*	<b>5.8</b>	
	7.5		5.6*	5.6*	5.2	5.7*					3.5	3.9*	<b>7.3</b>	
	6.0		5.8*	5.8*	5.2	6.0*	3.5	5.4*			2.8	3.7*	<b>8.3</b>	
	4.5	7.0*	7.0*	7.6*	7.6*	5.2	7.2*	3.5	6.0			2.4	3.7*	<b>8.9</b>
	3.0	13.2	16.7*	7.4	10.9*	4.9	8.1	3.4	5.9	2.3	4.3	2.2	3.7*	<b>9.2</b>
	1.5	12.7	16.6*	7.0	12.0*	4.6	8.0	3.2	5.8	2.3	4.2	2.2	4.0*	<b>9.2</b>
	0	11.4	18.0*	6.4	12.0	4.3	7.9	3.0	5.6	2.2	4.1	2.2	4.1	<b>9.0</b>
	-1.5	10.9	19.0*	6.0	12.1	4.1	7.7	2.9	5.4			2.3	4.4	<b>8.6</b>
	-3.0	10.8	18.7*	5.9	12.1	3.9	7.5	2.8	5.3*			2.7	4.2*	<b>7.8</b>
	-4.5	11.1	16.2*	5.9	9.9*	3.9	5.4*					3.8	4.7*	<b>6.2</b>
SLC	9.0		6.0*	6.0*							4.5*	4.5*	<b>5.8</b>	
	7.5		5.6*	5.6*	5.7*	5.7*					3.9*	3.9*	<b>7.3</b>	
	6.0		5.8*	5.8*	5.8	6.0*	3.9	5.4*			3.2	3.7*	<b>8.3</b>	
	4.5	7.0*	7.0*	7.6*	7.6*	5.7	7.2*	3.9	6.0			2.8	3.7*	<b>8.9</b>
	3.0	14.9	16.7*	8.2	10.9*	5.6	8.2	3.8	6.0	2.7	4.3	2.6	3.7*	<b>9.2</b>
	1.5	14.5	16.6*	7.9	12.0*	5.2	8.1	3.7	5.8	2.6	4.3	2.5	4.0*	<b>9.2</b>
	0	13.5	18.0*	7.3	12.1	4.9	8.1	3.5	5.7	2.5	4.2	2.5	4.2	<b>9.0</b>
	-1.5	12.9	19.0*	6.9	12.1*	4.6	7.8	3.3	5.5			2.7	4.5	<b>8.6</b>
	-3.0	12.8	18.7*	6.8	12.2*	4.5	7.6	3.3	5.3*			3.1	4.2*	<b>7.8</b>
	-4.5	13.1	16.2*	6.8	9.9*	4.5	5.4*					4.3	4.7*	<b>6.2</b>
LC	9.0		6.0*	6.0*							4.5*	4.5*	<b>5.8</b>	
	7.5		5.6*	5.6*	5.7*	5.7*					3.9*	3.9*	<b>7.3</b>	
	6.0		5.8*	5.8*	6.0*	6.0*	4.2	5.4*			3.4	3.7*	<b>8.3</b>	
	4.5	7.0*	7.0*	7.6*	7.6*	6.0	7.2*	4.2	6.1			3.0	3.7*	<b>8.9</b>
	3.0	16.0	16.7*	8.7	10.9*	5.9	8.2	4.1	6.0	2.9	4.3	2.8	3.7*	<b>9.2</b>
	1.5	15.6	16.6*	8.6	12.0*	5.6	8.1	3.9	5.9	2.8	4.3	2.7	4.0*	<b>9.2</b>
	0	14.8	18.0*	7.9	12.1	5.2	8.1	3.7	5.7	2.7	4.2	2.7	4.2	<b>9.0</b>
	-1.5	14.3	19.0*	7.5	12.1*	5.0	7.8	3.6	5.5			2.9	4.5	<b>8.6</b>
	-3.0	14.2	18.7*	7.4	12.2*	4.8	7.6	3.5	5.3*			3.4	4.2*	<b>7.8</b>
	-4.5	14.5	16.2*	7.4	9.9*	4.9	5.4*					4.7	4.7*	<b>6.2</b>
WLC	9.0		6.0*	6.0*							4.5*	4.5*	<b>5.8</b>	
	7.5		5.6*	5.6*	5.7*	5.7*					3.9*	3.9*	<b>7.3</b>	
	6.0		5.8*	5.8*	6.0*	6.0*	4.6	5.4*			3.7*	3.7*	<b>8.3</b>	
	4.5	7.0*	7.0*	7.6*	7.6*	6.5	7.2*	4.6	6.4*			3.3	3.7*	<b>8.9</b>
	3.0	16.7*	16.7*	9.5	10.9*	6.4	8.3*	4.5	6.4	3.2	4.6*	3.1	3.7*	<b>9.2</b>
	1.5	16.6*	16.6*	9.3	12.0*	6.2	8.7	4.4	6.4	3.1	4.7	3.0	4.0*	<b>9.2</b>
	0	17.1	18.0*	8.9	12.1*	5.8	8.6	4.1	6.2	3.1	4.6	3.0	4.3*	<b>9.0</b>
	-1.5	16.5	19.0*	8.5	12.1*	5.6	8.6	4.0	6.0			3.3	4.8*	<b>8.6</b>
	-3.0	16.4	18.7*	8.3	12.2*	5.4	8.4	3.9	5.3*			3.8	4.2*	<b>7.8</b>
	-4.5	16.2*	16.2*	8.4	9.9*	5.4*	5.4*					4.7*	4.7*	<b>6.2</b>

 **Height**
 **Can be slewed through 360°**
 **In longitudinal position of undercarriage**
 **Max. reach**
 \* Limited by hydr. capacity

The load values are quoted in tons (t) at stick end (without bucket), and may be swung 360° on firm and even ground. Adjacent values are valid for the undercarriage when in the longitudinal position. Capacities are valid for 600 mm wide track pads with adjusting cylinder in optimal position. Indicated loads are based on ISO 10567 standard and do not exceed 75% of tipping or 87% of hydraulic capacity (indicated via \*). Without bucket cylinder, link and lever the lift capacities will increase by 325 kg. Lifting capacity of the excavator is limited by machine stability and hydraulic capacity.

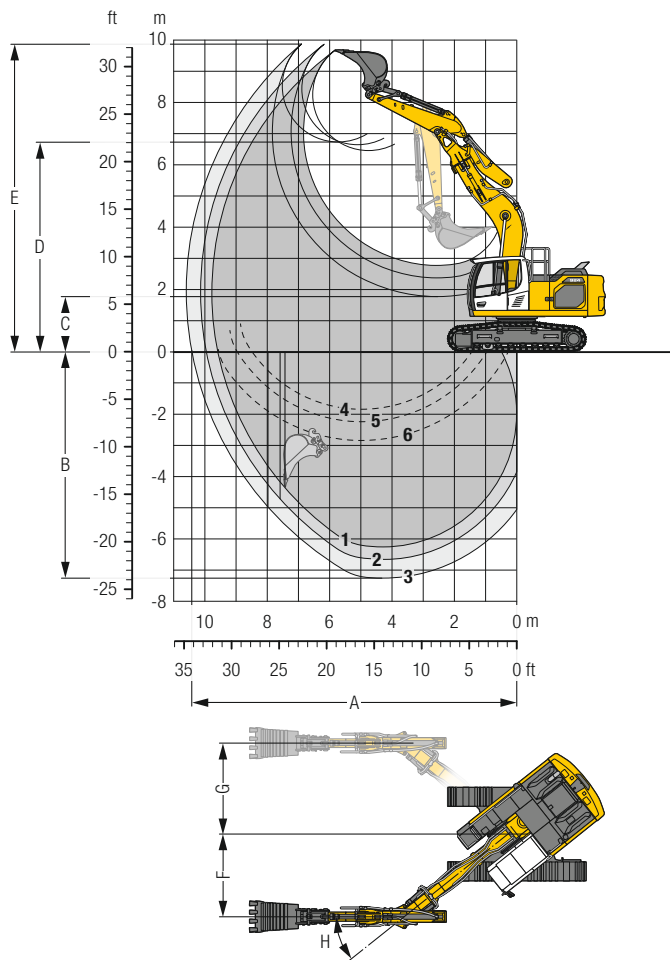
According to European Standard, EN 474-5: In the European Union excavators have to be equipped with an overload warning device, a load diagram and automatic safety check valves on hoist cylinders and stick cylinder(s), when they are used for lifting operations which require the use of lifting accessories.

<sup>1)</sup> Values are calculated with 500 mm wide track pads for the NLC-Undercarriage



# Backhoe Bucket

with Mono Boom Offset 5.65 m and Counterweight 5.0 t



## Digging Envelope

with quick coupler		1	2	3
Stick length	m	2.50	2.90	3.50
A Max. reach at ground level	m	9.58	9.95	10.42
B Max. digging depth	m	6.26	6.66	7.26
C Min. dumping height	m	2.77	2.37	1.77
D Max. dumping height	m	6.45	6.64	6.72
E Max. cutting height	m	9.66	9.85	9.87
F Max. offset right	m	2.92		
G Max. offset left	m	2.92		
H Max. offset angle	°	38.5		

- 1 with stick 2.50 m  
 2 with stick 2.90 m  
 3 with stick 3.50 m  
 with set straight boom
- 4 with stick 2.50 m  
 5 with stick 2.90 m  
 6 with stick 3.50 m  
 at max. attachment offset  
 with vertical ditch walls

## Forces

without quick coupler		1	2	3
Max. digging force (ISO 6015)	kN	135	122	106
Max. breakout force (ISO 6015)	kN	173	173	173
Max. digging force (SAE J1179)	kN	129	117	103
Max. breakout force (SAE J1179)	kN	151	151	151

## Operating Weight and Ground Pressure

The operating weight includes the basic machine with counterweight 5.0 t, mono boom offset 5.65 m, stick 2.90 m, quick coupler SWA 48 and bucket 1.25 m<sup>3</sup> (910 kg).

Undercarriage		NLC			SLC		
Pad width	mm	500	600	750	500	600	750
Weight	kg	24,300	24,550	24,700	24,400	24,650	24,800
Ground pressure	kg/cm <sup>2</sup>	0.62	0.52	0.42	0.62	0.52	0.42

Undercarriage		LC			WLC		
Pad width	mm	500	600	750	500	600	750
Weight	kg	24,500	24,750	24,900	24,900	25,200	25,600
Ground pressure	kg/cm <sup>2</sup>	0.62	0.52	0.42	0.60	0.51	0.41

## Buckets Machine stability per ISO 10567\* (75% of tipping capacity)

	Cutting width mm	Capacity ISO 7451 m <sup>3</sup>	Weight <sup>(3)</sup> kg	Weight <sup>(4)</sup> kg	NLC-Undercarriage (with track pads 500 mm)			SLC-Undercarriage (with track pads 600 mm)			LC-Undercarriage (with track pads 600 mm)			WLC-Undercarriage (with track pads 600 mm)			
					Stick length (m)			Stick length (m)			Stick length (m)			Stick length (m)			
					without quick coupler	with quick coupler	with quick coupler	without quick coupler	with quick coupler	with quick coupler	without quick coupler	with quick coupler	with quick coupler	without quick coupler	with quick coupler	with quick coupler	
STD <sup>(1)</sup>	850	0.75	620	630	▲	▲	▲	▲	▲	▲	▲	▲	▲	▲	▲	▲	▲
	1,050	0.95	700	710	▲	▲	▲	▲	▲	▲	▲	▲	▲	▲	▲	▲	▲
	1,250	1.15	810	830	▲	▲	▲	▲	▲	▲	▲	▲	▲	▲	▲	▲	▲
	1,250	1.25	890	910	▲	▲	▲	▲	▲	▲	▲	▲	▲	▲	▲	▲	▲
	1,400	1.35	850	880	▲	▲	▲	▲	▲	▲	▲	▲	▲	▲	▲	▲	▲
HD <sup>(2)</sup>	1,400	1.50	950	980	▲	▲	▲	▲	▲	▲	▲	▲	▲	▲	▲	▲	▲
	1,500	1.65	1,020	1,030	▲	▲	▲	▲	▲	▲	▲	▲	▲	▲	▲	▲	▲
	850	0.75	695	705	▲	▲	▲	▲	▲	▲	▲	▲	▲	▲	▲	▲	▲
	1,050	0.95	790	800	▲	▲	▲	▲	▲	▲	▲	▲	▲	▲	▲	▲	▲
	1,250	1.15	910	940	▲	▲	▲	▲	▲	▲	▲	▲	▲	▲	▲	▲	▲

\* Indicated loads are based on ISO 10567, at maximum reach, and may be swung 360° on firm and even ground

<sup>(1)</sup> Standard bucket with teeth Z 40 <sup>(2)</sup> HD bucket with teeth Z 40 <sup>(3)</sup> Bucket for direct mounting <sup>(4)</sup> Bucket for mounting to quick coupler  
 Other buckets available upon request

Max. material weight ▲ = ≤ 2.0 t/m<sup>3</sup>, ■ = ≤ 1.8 t/m<sup>3</sup>, ▲ = ≤ 1.65 t/m<sup>3</sup>, ■ = ≤ 1.5 t/m<sup>3</sup>, △ = ≤ 1.2 t/m<sup>3</sup>, - = not authorised

# Lift Capacities

with Mono Boom Offset 5.65 m, Counterweight 5.0 t and Track Pads 500 mm/600 mm

		Stick 2.50 m														
Under-carriage	m	3.0 m		4.5 m		6.0 m		7.5 m		9.0 m		m		m		
		↕	↔	↕	↔	↕	↔	↕	↔	↕	↔	↕	↔	↕	↔	
		NLC <sup>1)</sup>														
7.5												5.3	5.9*	<b>5.6</b>		
6.0												3.8	5.5*	<b>6.8</b>		
4.5	11.2*	11.2*										3.1	5.5*	<b>7.5</b>		
3.0			6.3	9.8*	4.2	7.5*	3.0	5.5				2.7	5.1	<b>7.9</b>		
1.5			5.6	11.3*	3.9	7.5	2.8	5.4				2.6	4.9	<b>8.0</b>		
0	5.9*	5.9*	5.4	11.4	3.7	7.2	2.7	5.2				2.6	5.0	<b>7.8</b>		
-1.5	10.0	13.0*	5.3	11.3*	3.6	7.2						2.9	5.5	<b>7.2</b>		
-3.0	10.3	13.4*	5.5	9.9*	3.7	7.3*						3.6	6.9*	<b>6.2</b>		
-4.5																
7.5												5.9*	5.9*	<b>5.6</b>		
6.0												4.3	5.5*	<b>6.8</b>		
4.5	11.2*	11.2*	8.0*	8.0*	5.1	6.7*	3.5	5.7				3.5	5.5*	<b>7.5</b>		
3.0			7.2	9.8*	4.8	7.5*	3.4	5.6				3.1	5.1	<b>7.9</b>		
1.5			6.6	11.3*	4.5	7.6	3.3	5.4				3.0	5.0	<b>8.0</b>		
0	5.9*	5.9*	6.3	11.6	4.3	7.4	3.2	5.3				3.0	5.1	<b>7.8</b>		
-1.5	12.0	13.0*	6.2	11.3*	4.2	7.3						3.3	5.6	<b>7.2</b>		
-3.0	12.3	13.4*	6.4	9.9*	4.3	7.3*						4.1	6.9*	<b>6.2</b>		
-4.5																
7.5												5.9*	5.9*	<b>5.6</b>		
6.0					5.8	6.2*						4.6	5.5*	<b>6.8</b>		
4.5	11.2*	11.2*	8.0*	8.0*	5.5	6.7*	3.8	5.8				3.8	5.5*	<b>7.5</b>		
3.0			7.8	9.8*	5.2	7.5*	3.7	5.6				3.4	5.2	<b>7.9</b>		
1.5			7.1	11.3*	4.8	7.6	3.5	5.5				3.2	5.0	<b>8.0</b>		
0	5.9*	5.9*	6.8	11.6	4.6	7.4	3.4	5.3				3.3	5.1	<b>7.8</b>		
-1.5	13.0*	13.0*	6.8	11.3*	4.6	7.3						3.6	5.7	<b>7.2</b>		
-3.0	13.4*	13.4*	7.0	9.9*	4.7	7.3*						4.5	6.9*	<b>6.2</b>		
-4.5																
7.5												5.9*	5.9*	<b>5.6</b>		
6.0					6.2*	6.2*						5.1	5.5*	<b>6.8</b>		
4.5	11.2*	11.2*	8.0*	8.0*	6.1	6.7*	4.2	5.9*				4.2	5.5*	<b>7.5</b>		
3.0			8.8	9.8*	5.8	7.5*	4.1	6.1				3.8	5.6	<b>7.9</b>		
1.5			8.1	11.3*	5.4	8.2*	3.9	6.0				3.6	5.4	<b>8.0</b>		
0	5.9*	5.9*	7.8	11.7*	5.2	8.1	3.8	5.9				3.7	5.6	<b>7.8</b>		
-1.5	13.0*	13.0*	7.7	11.3*	5.1	8.1						4.1	6.2	<b>7.2</b>		
-3.0	13.4*	13.4*	7.9	9.9*	5.3	7.3*						5.0	6.9*	<b>6.2</b>		
-4.5																

		Stick 2.90 m																
Under-carriage	m	3.0 m		4.5 m		6.0 m		7.5 m		9.0 m		m		m				
		↕	↔	↕	↔	↕	↔	↕	↔	↕	↔	↕	↔	↕	↔			
		NLC <sup>1)</sup>																
7.5												4.9	5.4*			4.7	5.0*	<b>6.1</b>
6.0												4.9	5.7*			3.4	4.7*	<b>7.3</b>
4.5												4.6	6.3*	3.1	5.7	2.8	4.7*	<b>7.9</b>
3.0				6.4	9.2*	4.2	7.1*	3.0	5.5			2.5	4.7	<b>8.3</b>				
1.5				5.7	10.9*	3.9	7.5	2.8	5.3			2.4	4.5	<b>8.3</b>				
0	7.1*	7.1*	5.3	11.4	3.6	7.2	2.7	5.2				2.4	4.6	<b>8.1</b>				
-1.5	9.7	12.2*	5.2	11.2	3.5	7.1	2.7	5.2				2.6	5.1	<b>7.6</b>				
-3.0	10.0	14.4*	5.3	10.4*	3.6	7.2						3.2	6.1	<b>6.7</b>				
-4.5	10.6	10.7*	5.7	7.8*								4.7	6.4*	<b>5.2</b>				
7.5												5.4*	5.4*			5.0*	5.0*	<b>6.1</b>
6.0												5.5	5.7*			3.9	4.7*	<b>7.3</b>
4.5												5.2	6.3*	3.6	5.8*	3.2	4.7*	<b>7.9</b>
3.0				7.4*	9.2*	4.8	7.1*	3.4	5.6			2.9	4.8	<b>8.3</b>				
1.5				6.6	10.9*	4.5	7.6	3.2	5.4			2.8	4.6	<b>8.3</b>				
0	7.1*	7.1*	6.2	11.5	4.2	7.3	3.1	5.3				2.8	4.7	<b>8.1</b>				
-1.5	11.7	12.2*	6.1	11.4	4.1	7.2	3.1	5.2				3.0	5.2	<b>7.6</b>				
-3.0	12.0	14.4*	6.2	10.4*	4.2	7.3						3.7	6.2	<b>6.7</b>				
-4.5	10.7*	10.7*	6.6	7.8*								5.4	6.4*	<b>5.2</b>				
7.5												5.4*	5.4*			5.0*	5.0*	<b>6.1</b>
6.0												5.7*	5.7*			4.2	4.7*	<b>7.3</b>
4.5												5.6	6.3*	3.8	5.8*	3.5	4.7*	<b>7.9</b>
3.0				8.0	9.2*	5.2	7.1*	3.7	5.6			3.1	4.8	<b>8.3</b>				
1.5				7.2	10.9*	4.8	7.6	3.5	5.4			3.0	4.6	<b>8.3</b>				
0	7.1*	7.1*	6.8	11.6	4.6	7.3	3.4	5.3				3.0	4.7	<b>8.1</b>				
-1.5	12.2*	12.2*	6.7	11.4*	4.5	7.2	3.3	5.3				3.3	5.2	<b>7.6</b>				
-3.0	13.3	14.4*	6.8	10.4*	4.5	7.3						4.0	6.3	<b>6.7</b>				
-4.5	10.7*	10.7*	7.2	7.8*								5.8	6.4*	<b>5.2</b>				
7.5												5.4*	5.4*			5.0*	5.0*	<b>6.1</b>
6.0												5.7*	5.7*			4.6	4.7*	<b>7.3</b>
4.5												6.2	6.3*	4.3	5.8*	3.9	4.7*	<b>7.9</b>
3.0				8.9	9.2*	5.8	7.1*	4.1	6.1*			3.5	4.8*	<b>8.3</b>				
1.5				8.1	10.9*	5.4	8.0*	3.9	6.0			3.3	5.1	<b>8.3</b>				
0	7.1*	7.1*	7.7	11.6*	5.2	8.1	3.8	5.8				3.4	5.2	<b>8.1</b>				
-1.5	12.2*	12.2*	7.6	11.4*	5.1	8.0	3.8	5.8				3.7	5.7	<b>7.6</b>				
-3.0	14.4*	14.4*	7.7	10.4*	5.1	7.7*						4.4	6.6*	<b>6.7</b>				
-4.5	10.7*	10.7*	7.8*	7.8*								6.4*	6.4*	<b>5.2</b>				

↕ Height   ↔ Can be slewed through 360°   In longitudinal position of undercarriage   Max. reach   \* Limited by hydr. capacity

The load values are quoted in tons (t) at stick end (without bucket), and may be swung 360° on firm and even ground. Adjacent values are valid for the undercarriage when in the longitudinal position. Capacities are valid for 600 mm wide track pads. Indicated loads are based on ISO 10567 standard and do not exceed 75% of tipping or 87% of hydraulic capacity (indicated via \*). Without bucket cylinder, link and lever the lift capacities will increase by 325 kg. Lifting capacity of the excavator is limited by machine stability and hydraulic capacity.

According to European Standard, EN 474-5: In the European Union excavators have to be equipped with an overload warning device, a load diagram and automatic safety check valves on hoist cylinders and stick cylinder(s), when they are used for lifting operations which require the use of lifting accessories.

<sup>1)</sup> Values are calculated with 500 mm wide track pads for the NLC-Undercarriage

## Stick 3.50 m

Under-carriage	3.0 m		4.5 m		6.0 m		7.5 m		9.0 m		Max. reach			
	↕	↔	↕	↔	↕	↔	↕	↔	↕	↔	↕	↔		
m	m	m	m	m	m	m	m	m	m	m	m	m		
NLC <sup>1)</sup>	7.5				5.0	5.1*	3.3	4.4*			3.8*	3.8*	<b>6.7</b>	
	6.0				4.7	5.7*	3.2	5.3*			3.1	3.7*	<b>7.8</b>	
	4.5										2.6	3.7*	<b>8.4</b>	
	3.0	12.3	12.8*	6.7	8.3*	4.3	6.6*	3.0	5.6			2.3	3.9*	<b>8.7</b>
	1.5	7.9*	7.9*	5.8	10.2*	3.9	7.5*	2.8	5.3			2.2	4.2*	<b>8.8</b>
	0	8.6*	8.6*	5.3	11.3*	3.6	7.2	2.6	5.2			2.2	4.2	<b>8.6</b>
	-1.5	9.5	11.9*	5.1	11.1	3.5	7.0	2.6	5.1			2.3	4.6	<b>8.1</b>
	-3.0	9.7	15.6*	5.1	10.8*	3.5	7.0					2.7	5.3	<b>7.3</b>
-4.5	10.1	12.6*	5.4	9.0*							3.7	6.5*	<b>5.9</b>	
SLC	7.5				5.1*	5.1*	3.8	4.4*			3.8*	3.8*	<b>6.7</b>	
	6.0				5.3	5.7*	3.6	5.3*			3.5	3.7*	<b>7.8</b>	
	4.5				4.9	6.6*	3.5	5.7			3.0	3.7*	<b>8.4</b>	
	3.0	12.8*	12.8*	7.6	8.3*	4.9	6.6*	3.5	5.7			2.7	3.9*	<b>8.7</b>
	1.5	7.9*	7.9*	6.8	10.2*	4.5	7.5*	3.2	5.4			2.5	4.2*	<b>8.8</b>
	0	8.6*	8.6*	6.2	11.3*	4.2	7.3	3.1	5.2			2.5	4.3	<b>8.6</b>
	-1.5	11.4	11.9*	6.0	11.3	4.0	7.1	3.0	5.1			2.7	4.6	<b>8.1</b>
	-3.0	11.6	15.6*	6.1	10.8*	4.0	7.1					3.2	5.4	<b>7.3</b>
-4.5	12.1	12.6*	6.3	9.0*							4.3	6.5*	<b>5.9</b>	
LC	7.5				5.1*	5.1*	4.0	4.4*			3.8*	3.8*	<b>6.7</b>	
	6.0				5.7*	5.7*	3.9	5.3*			3.7*	3.7*	<b>7.8</b>	
	4.5										3.2	3.7*	<b>8.4</b>	
	3.0	12.8*	12.8*	8.2	8.3*	5.3	6.6*	3.7	5.7			2.9	3.9*	<b>8.7</b>
	1.5	7.9*	7.9*	7.4	10.2*	4.9	7.5*	3.5	5.4			2.7	4.2*	<b>8.8</b>
	0	8.6*	8.6*	6.8	11.3*	4.6	7.3	3.3	5.3			2.7	4.3	<b>8.6</b>
	-1.5	11.9*	11.9*	6.6	11.3	4.4	7.1	3.2	5.2			2.9	4.6	<b>8.1</b>
	-3.0	12.9	15.6*	6.6	10.8*	4.4	7.1					3.4	5.5	<b>7.3</b>
-4.5	12.6*	12.6*	6.9	9.0*							4.7	6.5*	<b>5.9</b>	
WLC	7.5				5.1*	5.1*	4.4*	4.4*			3.8*	3.8*	<b>6.7</b>	
	6.0				5.7*	5.7*	4.3	5.3*			3.7*	3.7*	<b>7.8</b>	
	4.5										3.5	3.7*	<b>8.4</b>	
	3.0	12.8*	12.8*	8.3*	8.3*	5.9	6.6*	4.1	5.7*			3.2	3.9*	<b>8.7</b>
	1.5	7.9*	7.9*	8.3	10.2*	5.5	7.5*	3.9	6.0			3.1	4.2*	<b>8.8</b>
	0	8.6*	8.6*	7.7	11.3*	5.1	8.1	3.7	5.8			3.1	4.7*	<b>8.6</b>
	-1.5	11.9*	11.9*	7.5	11.5*	5.0	7.9	3.7	5.7			3.3	5.1	<b>8.1</b>
	-3.0	15.1	15.6*	7.5	10.8*	5.0	7.9					3.9	6.0	<b>7.3</b>
-4.5	12.6*	12.6*	7.8	9.0*							5.3	6.5*	<b>5.9</b>	

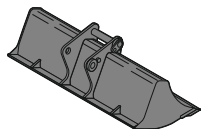
Height 
 Can be slewed through 360° 
 In longitudinal position of undercarriage 
 Max. reach 
 \* Limited by hydr. capacity

The load values are quoted in tons (t) at stick end (without bucket), and may be swung 360° on firm and even ground. Adjacent values are valid for the undercarriage when in the longitudinal position. Capacities are valid for 600 mm wide track pads. Indicated loads are based on ISO 10567 standard and do not exceed 75 % of tipping or 87 % of hydraulic capacity (indicated via \*). Without bucket cylinder, link and lever the lift capacities will increase by 325 kg. Lifting capacity of the excavator is limited by machine stability and hydraulic capacity.

According to European Standard, EN 474-5: In the European Union excavators have to be equipped with an overload warning device, a load diagram and automatic safety check valves on hoist cylinders and stick cylinder(s), when they are used for lifting operations which require the use of lifting accessories.

<sup>1)</sup> Values are calculated with 500 mm wide track pads for the NLC-Undercarriage

# Available Tools



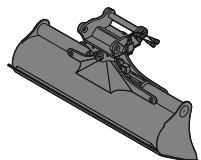
## Rigid Ditch Cleaning Bucket

### GRL 90, for direct mounting

Cutting width	mm	1,500	2,000	2,010	2,400				
Capacity	m <sup>3</sup>	0.50	0.70	0.85	0.85				
Weight	kg	400	500	530	580				

### GRL 90, for mounting to quick coupler SWA 48

Cutting width	mm	1,500	1,500	2,000	2,000	2,000	2,400	2,400	
Capacity	m <sup>3</sup>	0.50	0.95	0.70	1.20	1.25	0.85	1.15	
Weight	kg	430	560	400	640	600	600	650	



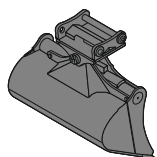
## Ditch Cleaning Bucket

### GRL 90, 2 x 50° tiltable, for direct mounting

Cutting width	mm	1,600	2,000	2,000	2,000	2,200	2,400	2,800		
Capacity	m <sup>3</sup>	0.80	0.50	0.70	1.00	1.15	0.85	1.45		
Weight	kg	798	686	819	883	920	885	1,009		

### GRL 90, 2 x 50° tiltable, for mounting to quick coupler SWA 48

Cutting width	mm	1,600	2,000	2,000	2,000	2,200	2,200	2,200	2,400	2,400	2,800
Capacity	m <sup>3</sup>	0.80	0.50	0.70	1.00	0.80	1.15	1.40	0.85	1.25	1.85
Weight	kg	850	690	880	940	880	980	1,000	890	1,000	1,088



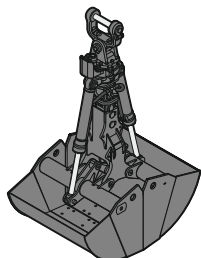
## Tilt Bucket

### SL 90, 2 x 50° tiltable, for direct mounting

Cutting width	mm	1,600	1,600	1,600						
Capacity	m <sup>3</sup>	0.80	1.00	1.35						
Weight	kg	768	820	918						

### SL 90, 2 x 50° tiltable, for mounting to quick coupler SWA 48

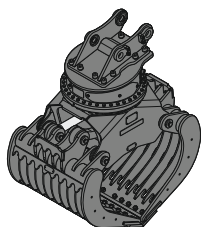
Cutting width	mm	1,500	1,600	1,600	1,600	1,600	1,600	1,600	1,600	1,600
Capacity	m <sup>3</sup>	1.20	0.80	1.00	1.35	1.55	0.80	1.00	1.35	1.55
Weight	kg	970	820	890	970	1,035	820	1,006	1,184	1,550
HD-version							X	X	X	X



## Clamshells

### GM 20C, earthmoving shell, for mounting to quick coupler SWA 48 (exists for direct mounting)

Cutting width	mm	600	800	1,000	1,200
Capacity	m <sup>3</sup>	0.45	0.60	0.75	0.90
Weight	kg	575	625	700	765



## Sorting Grab

ribbed

perforated

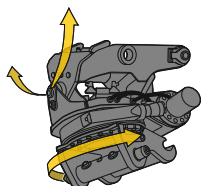
stone tong

### SG 30, for direct mounting

Cutting width	mm	1,000	1,150	1,000	1,150	1,020
Capacity	m <sup>3</sup>	0.75	0.90	0.85	1.00	0.85
Weight	kg	1,510	1,590	1,490	1,570	1,765

### SG 30, for mounting to quick coupler SWA 48

Cutting width	mm	1,000	1,150	1,000	1,150	1,020
Capacity	m <sup>3</sup>	0.75	0.90	0.85	1.00	0.85
Weight	kg	1,510	1,590	1,490	1,570	1,765



## Tiltrotator

### LH-TR 25, for mounting to quick coupler SWA 48

Weight	kg	720
Rotation		360°
Tilt		2 x 50°

# Serial Equipment

## Undercarriage

Track and carrier rollers, sealed and lifetime-lubricated  
Sprocket with dirt ejector  
Lashing eyes

## Uppercarriage

Access platforms without protruding parts  
Anti-skid surfaces  
Automatic swing brake lock  
Centralised lubrication system (automatic)  
DEF tank filling indicator  
DEF tank lockable access hatch  
Engine coolant level, visible from the cab  
Engine hood with gas spring opening  
Filters accessible from ground level  
Handrails  
Hydraulic oil level, visible from ground level  
Lockable fuel tank cap  
Lockable service doors  
Lockable storage and accessories compartment  
Lockable storage box  
Main switch, electric, with timer  
Main switch, manual, lockable  
Protection grid on radiator fan  
Safe uppercarriage side access platform  
Sound insulation  
Swing drive gearbox oil level, visible from the cab  
Swing-out radiators  
Windshield washer fluid tank, accessible from ground level

## Hydraulic System

Filter with integrated fine filters  
Hydraulic pressure measuring ports  
Liebherr Positive Control system with 2 independent circuits  
Magnetic rod  
Pressure accumulator for controlled lowering of equipment with engine turned off

## Engine

Air filter with automatic dust ejector  
Automatic engine idling/speed increase, controlled via joystick sensors  
Common-Rail injection system  
Exhaust gas after-treatment system – DOC + DPF + SCR  
Fixed geometry turbocharger  
Fuel fine filter  
Fuel pre-filter and water separator  
Fuel priming pump  
Intercooler  
Motorisation EU Stage V  
Stepless adjustable engine speed

## Operator's Cab

7" multifunction colour touchscreen  
Air conditioning, automatic, tri-zone, controlled via display  
Armrests adjustable in width, height and inclination  
Bottle holder  
Cab air filters housing, accessible from ground level  
Cab door sliding windows  
Cigarette lighter  
Coat hook  
DEF consumption on touchscreen  
DEF level on touchscreen  
Electric socket in cabin (12 V)  
Electric socket in cabin (24 V)  
Emergency hammer  
Engine oil level on touchscreen  
Fuel consumption on touchscreen  
Fuel level on touchscreen  
Hydraulic oil level on touchscreen  
Interior lighting  
Laminated right hand side window  
LiDAT Plus (Liebherr data transfer system) \*  
Mechanical hour meters, visible from ground level  
Mobile phone storage net  
Movement priority between swing and boom, adjustable via touchscreen  
Movement priority for stick-in, adjustable via touchscreen  
Rain hood over front window opening  
Rearview mirror  
Rear view monitoring camera  
Rear window emergency exit  
Right hand side view monitoring camera  
Roll-down sun blinds for windscreen and roof window  
ROPS safety cab structure (ISO 12117-2)  
Rubber floor mat, fixed on floor and removable  
Storage box  
Storage nets  
Storage spaces  
Swing braking torque adjustable via touchscreen  
Tilttable console left  
Tinted windows  
Visco-elastic damping  
Windscreen wiper and washer  
Work mode selector

## Attachment

Boom cylinders regeneration  
Pipe fracture safety valve for stick cylinder  
Pipe fracture safety valves for boom cylinders  
Pivot points made of cast steel  
SAE split flanges on high pressure lines  
Stick cylinder regeneration

\* optionally extendable after one year

# Equipment Standard/Option

## Undercarriage

Chain guide 1 piece	•
Chain guide 3 pieces	+
Reinforced cover and base plate for undercarriage centre section	+
Special painting	+
Standard cover plate for undercarriage centre section	•
Steps	•
Steps wide	+
Track pads triple grouser 500/750/900 mm	+
Track pads triple grouser 600 mm	•
Track pads triple grouser reinforced 500/600/750 mm	+
Tracks, sealed and greased, with track pads	•
Tracks, sealed and greased, with track pads, reinforced	+
Undercarriage LC	+
Undercarriage NLC	+
Undercarriage SLC	+
Undercarriage WLC	+
Undercarriage storage compartment	+

## Upper-carriage

Air pre-filter with cyclonical dust trap	+
Boxing ring	+
Counterweight standard 5.0 t	•
Electric socket on uppercarriage (24 V)	+
Extended tool set including tool box	+
Fuel anti-theft protection	+
Headlight on uppercarriage, front left, LED+, 1 piece, protection included	+ <sup>1)</sup>
Headlight on uppercarriage, front right, LED, 1 piece, protection included	• <sup>1)</sup>
Headlight on uppercarriage, front right, LED+, 1 piece, protection included	+ <sup>1)</sup>
Headlight on uppercarriage, lateral left, LED+, 1 piece	+ <sup>1)</sup>
Headlight on uppercarriage, lateral right, LED+, 1 piece	+ <sup>1)</sup>
Headlights on uppercarriage, rear, LED+, 2 pieces	+ <sup>1)</sup>
Lighting for tank area	+ <sup>1)</sup>
Lighting for uppercarriage access	+ <sup>1)</sup>
Pre-heating system for fuel	+
Radiator fine mesh protection grid	+
Reflective warning stickers	+
Reversible fan drive	+
Rotating beacons on uppercarriage, rear, LED, 2 pieces	+
Skyview 360°	+
Special painting	+
Tank refilling pump fuel	+
Tool set including storage case	•



## Hydraulic System

Bypass filter for hydraulic oil	+
Liebherr hydraulic oil	•
Liebherr hydraulic oil, adapted for extreme climate conditions	+
Liebherr hydraulic oil, biodegradable	+



## Engine

Automatic engine shutdown after idling	+
Engine shut-down with overrun	+
Lighting for engine compartment	+ <sup>1)</sup>



## Operator's Cab

2" seat belt with retractor	•
3" seat belt with retractor, orange colour	+
4-points seat belt	+
Acoustic travel alarm deactivatable	+
Auxiliary heater programmable	+
Bottom windscreen wiper	+
Cool box (12 V)	+
Dark tinted windows	+
Electrically adjustable and heated outside rear-view mirrors	+
Electronic immobiliser	+
Emergency stop in cab	+
FGPS front guard	+
Filter for hydraulic hammer return flow	+
Fire extinguisher	+
First-aid box	+
Footrest	+
FOPS top guard	+
Handrests elevated for joysticks	+
Headlights on cab, front, LED, 2 pieces	• <sup>1)</sup>
Headlights on cab, front, LED+, 2 pieces	+ <sup>1)</sup>
Headlights on cab roof, front, LED+, 2 pieces	+ <sup>1)</sup>
High pressure circuit switchable on pedals or mini-joystick	+
High pressure circuit with Tool Control (20 tool adjustments on display)	+
Impact resistant one-piece windscreen	+
Impact resistant roof window	+
Integral protection guard	+
Laminated roof window	•
Lightbar on cabin	+
Luminosity control (LED+ headlights)	+ <sup>1)</sup>
Medium pressure circuit	+
Mini-joystick proportional	+
Movement restriction for boom	+
Movement restriction for stick	+
Operator seat Comfort	•
Operator seat Premium	+
Overload warning system	+
Preparation for machine guidance system	+
Preparation for tiltrotator	+
Preparation for weighing system	+
Radio Comfort	+
Radio pre-installation	•
Retractable laminated two-piece windscreen	•
Roof sun shield	+
Roof window wiper	+
Rotating beacon on cabin, LED, 1 piece	+
Seat belt reminder	+
Shortkey button on joystick configurable	•
Special painting	+
Sun visor	+
Switch between high pressure and bucket cylinder controls	+
Windscreen bottom protection grid	+



## Attachment

Bucket cylinder rod protection	+
Centralised lubrication extended for connecting link	+
Floating boom	+
Grapple hydraulic lines (bucket cylinder inactive)	+
Headlight guard on boom, right	+
Headlight guards on boom, right and left	+
Headlight on boom, left, LED+, 1 piece	+ <sup>1)</sup>
Headlight on boom, right, LED, 1 piece	• <sup>1)</sup>
Headlight on boom, right, LED+, 1 piece	+ <sup>1)</sup>
Headlight on stick, bottom, LED+, 1 piece	+ <sup>1)</sup>
Liebherr bucket range	+
Liebherr tooth system	+
LIKUFIX electric signal plug	+
LIKUFIX for quick coupler SWA 48 hydraulic	+
Load holding valve for bucket cylinder	+
Lubrication hoses protection on stick	+
Mono boom 5.70 m	+
Mono boom offset 5.65 m	+
Mono boom straight 5.90 m	+
Quick coupler SWA 48 hydraulic	+
Quick coupler SWA 48 mechanical	+
Special painting	+
Stick 2.50 m	+
Stick 2.90 m	+
Stick 3.50 m	+
Stick bottom protection	+
Tool Management	+
Two-piece boom 5.90 m	+

### • = Standard, + = Option

<sup>1)</sup> Equipment not individually available, but only as predefined lighting packages  
Non-exhaustive list, please contact us for further information.

**Options and/or special attachments, supplied by vendors other than Liebherr, are only to be installed with the knowledge and approval of Liebherr in order to retain warranty.**

# The Liebherr Group of Companies



## Wide Product Range

The Liebherr Group is one of the largest construction equipment manufacturers in the world. Liebherr's high-value products and services enjoy a high reputation in many other fields. The wide range includes domestic appliances, aerospace and transportation systems, machine tools and maritime cranes.

## Exceptional Customer Benefit

Every product line provides a complete range of models in many different versions. With both their technical excellence and acknowledged quality, Liebherr products offer a maximum of customer benefits in practical applications.

## State-of-the-art Technology

To provide consistent, top quality products, Liebherr attaches great importance to each product area, its components and core technologies. Important modules and components are developed and manufactured in-house, for instance the entire drive and control technology for construction equipment.

## Worldwide and Independent

Hans Liebherr founded the Liebherr family company in 1949. Since then, the family business has steadily grown to a group of more than 130 companies with nearly 44,000 employees located on all continents. The corporate headquarters of the Group is Liebherr-International AG in Bulle, Switzerland. The Liebherr family is the sole owner of the company.

[www.liebherr.com](http://www.liebherr.com)

## Liebherr-France SAS

2 avenue Joseph Rey, B.P. 90287, FR-68005 Colmar Cedex  
☎ +33 389 21 30 30, Fax +33 389 21 37 93  
[www.liebherr.com](http://www.liebherr.com), E-Mail: [info.lfr@liebherr.com](mailto:info.lfr@liebherr.com)  
[www.facebook.com/LiebherrConstruction](https://www.facebook.com/LiebherrConstruction)