

**OKADA**<sup>®</sup>  
Demolition Attachments

# PULVERIZER OSC SERIES



# PULVERIZER OSC SERIES

Secondary breaking crushers were developed as a result of a growing need to reduce disposal volume and recycle concrete waste created during concrete building demolition. The flat, wide jaw design and an internal speed valve make it possible to grab and crush large sections of concrete quickly.

## NEW OSC220US

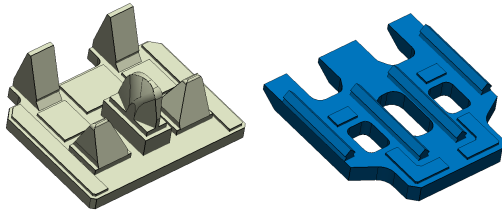
### ● Grizzly Design

(OSC220US only)

The pulverizer construction uses a robust, pass-through grizzly design, allowing crushed material to easily release from the crushing zone between the jaws.

### ● Replaceable Tooth Pad

(OSC220A, OSC220US)



No welding installation is required.

### ● Pressure Relief Valve

A standard built-in pressure relief valve protects against overload.

### ● Strong Crushing Force Short Cycle Time

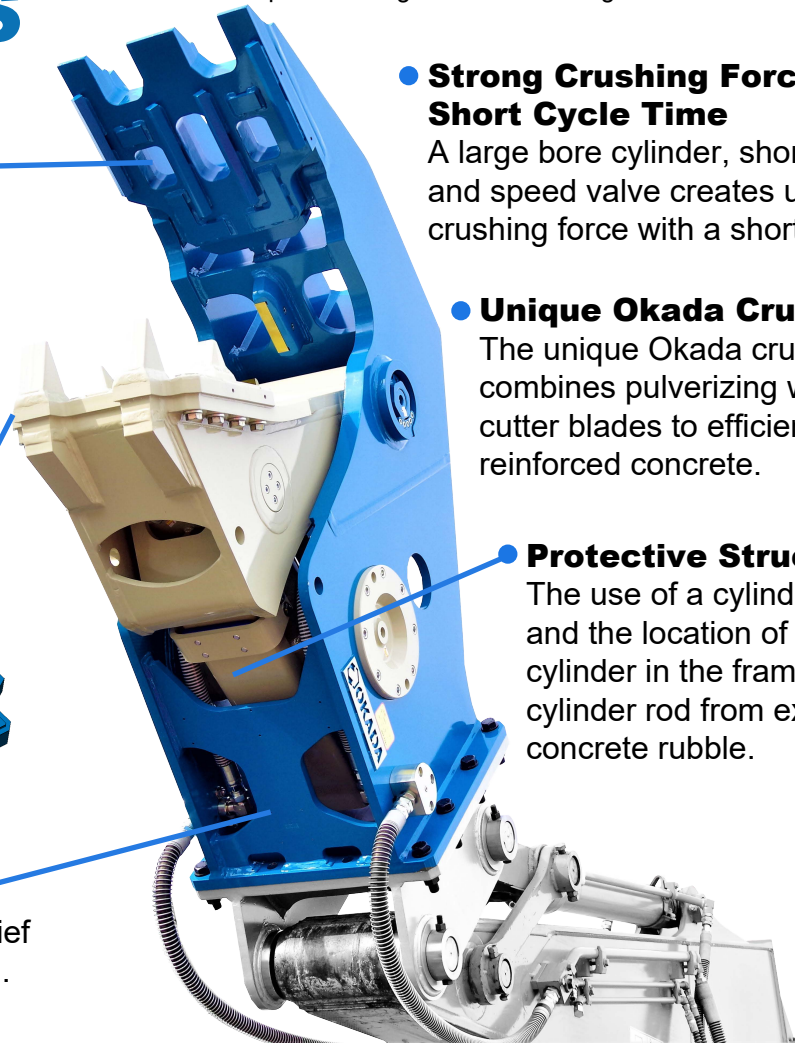
A large bore cylinder, short stroke and speed valve creates unmatched crushing force with a short cycle time.

### ● Unique Okada Crushing Teeth

The unique Okada crushing teeth combines pulverizing wedges and cutter blades to efficiently process reinforced concrete.

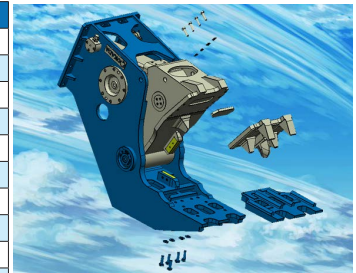
### ● Protective Structure

The use of a cylinder rod protector and the location of the hydraulic cylinder in the frame protects the cylinder rod from exposure to concrete rubble.



## SPECIFICATIONS

		OSC35A	OSC70A	OSC135A	OSC200A	OSC220A/220US	OSC360A	OSC450V
Replaceable tooth pad		-	-	-	-	Yes	-	-
Body design		Solid	Solid	Solid	Solid	Solid/Grizzly	Solid	Solid
Operating weight	lbs	620	1430	2400	3950	4277/4267	6970	7610
	kg	280	650	1090	1790	1940/1935	3160	3450
Oil flow	gpm	7-13	16-35	26-63	44-116	44-116	66-132	79-159
	lpm	25-50	61-132	98-238	167-439	167-439	250-500	300-600
Operating pressure	psi	4000	4000	4000	4600	4600	4600	4600
	bar	280	280	280	320	320	320	320
Overall length	inch	49	62	76	86	75	106	119.9
	mm	1245	1580	1930	2190	1905	2700	3045
Overall height	inches	27.8	37.8	46.3	55.5	53.7	69.3	72.4
	mm	705	960	1175	1410	1365	1760	1840
Maximum jaw opening	inches	16.9	23.6	28.7	34	34.8	43.5	47.2
	mm	430	600	730	860	885	1105	1200
Cutter blade length	inches	3.5	3.9	5.9	5.9	5.9	7.1	7.1
	mm	90	100	150	150	150	180	180
Crushing force at center of jaw	US tons	35	51	67	99	99	112	129
	kN	305	450	600	880	880	1000	1150
Carrier weight range	1000lbs	6.6-11	13-20	22-35	40-56	40-77	60-96	66-104
	m tons	3-5	6-9	10-16	18-25	18-35	27-45	30-48



1) All models are equipped with a speed valve for increased cycle time and a built-in pressure relief valve. 2) The replaceable tooth pad is only available for the OSC220A and OSC220US. 3) The above specifications assume the use of an Okada universal pin mount. 4) Specifications are subject to change without prior notice.



## Okada America Inc.

12950 SE Hwy212 Bldg.D  
Clackamas OR, 97015  
Tel 503-557-7033  
FAX 503-557-7779

904 Medina Rd.  
Medina, OH 44256  
Tel 330-239-2666  
FAX 330-239-3670

115 Commerce Blvd  
Cleburne, TX 76033