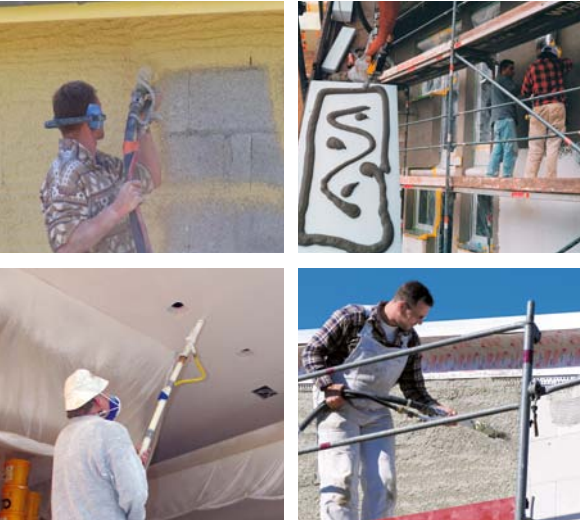


Outstanding in every respect – the new MP 15!



Application of plastering made easy

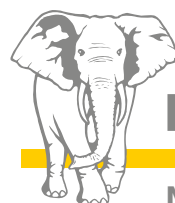
- Versatile and multifunctional
- Conveying dry and wet mortar with max. grain size of 3 mm
- 230 V
- Compact design
- Dismantles into 3 parts
- Low weight
- Easy handling (transport)
- Infinitely adjustable delivery rate
- Additional mixer not required
- Easy to clean



The universal solution for dry mortar, wet mortar, paint and other paste-like materials

The practical MP 15 from Putzmeister offers genuine added value for a range of rendering jobs and special applications. Whether interior or exterior plastering with pre-mix material, gypsum plaster lime cement and cement plaster, paste-like and fluid materials, leveling compound, adhesive, undercoat, paint and other EIFS products – the MP 15 offers superior performance for mixing and conveying material with a maximum grain size of 3 mm. A powerful engine with integral frequency converter and mixing pipe with intelligent design make it possible. The machine only requires a 230 V connection to operate on small construction sites and complete refurbishment jobs.

Top marks for functional design: You will notice the difference during operation, transport, set-up and cleaning because the low weight and ease of disassembly make the machine extremely simple to handle.



Putzmeister

Mörtelmaschinen

Less work means greater economic efficiency – the MP 15 from Putzmeister

We like to offer you solutions that make your work easier, including simple, convenient operation. In spite of its modest dimensions, the MP 15 fulfils these requirements in their entirety. We have reduced the number of controls on the operating panel to the bare minimum and adapted the panel to the tough conditions on the site.

Working with the MP 15 is so convenient:

Simply connect the power and water, start the pump and adjust the delivery rate and water quantity. You can then fill the hopper with material and check the material consistence at the pressure outlet. Then just attach the mortar hose and you can start work straightaway. The pump can be controlled conveniently using the spray gun. If the water supply is interrupted, the pump stops automatically and does not run dry. The MP 15 can be dismantled and cleaned in no time at all, ready for the next job.



Technical data MP 15 (part number: 111641000)

| | |
|--------------------------------|----------------------|
| Working pressure | max. 30 bar |
| Output* | 0,2–16 l/min |
| Delivery range** | 20 m |
| Grain size | 3 mm |
| Pump type | N13S |
| Power supply | 230 V/50 Hz |
| Drive | 1,5 kW, 106–403 rpm |
| Hopper volume | 40 l |
| Filling height | 90 cm |
| Weight | 114 kg |
| Length × width × height | 1400 × 620 × 1020 mm |
| Discharge connection | ID 25 |

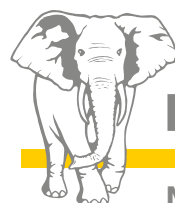
* The delivery range is theoretical and depends on the pump pressure. Depending on the pump used, the delivery rate may be higher or lower. ** The data is based on experience and is dependent on the materials used.

Standard

- Integral machine vibrator for minimal material losses and a continuous material flow
- Water pump for a constant and adequate water pressure
- Mortar pressure gauge at pump outlet
- Cleaning tool
- Compressor (180 l/min)
- Bag opener
- Compressed air remote control
- Air and mortar hose (10 m each)
- Spray gun

Putzmeister Mörtelmaschinen GmbH

Max-Eyth-Straße 10 · 72631 Aichtal
Tel. +49 (7127) 599-0 · Fax +49 (7127) 599-743
mm@pmw.de · www.pmmortar.com



Putzmeister

Mörtelmaschinen