

KOMATSU

PRELIMINARY

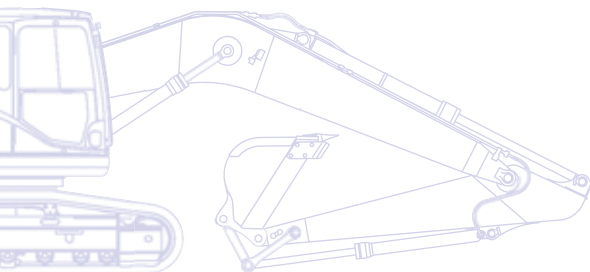
HB
215LC



Hydraulic Excavator

HB215LC-2

Hybrid



ENGINE POWER
110 kW / 148 HP @ 2.000 rpm

OPERATING WEIGHT
22.580 - 23.440 kg

BUCKET CAPACITY
max. 1,68 m³

Hybrid

Improved Komatsu Hybrid System

- Third generation-proven technology
- Reliable and durable hybrid system components
- Electric swing to capture and regenerate energy
- New engine and hydraulic pump control technology
- Massive reduction in fuel consumption



Highest safety standards

- Safe SpaceCab™, ROPS compliant with ISO12117-2:2008
- Rear view camera, side view camera optional
- Optimal jobsite safety
- Safe access, easy maintenance
- Falling Object Protection System (FOPS) optional
- Additional working lights (optional)
- Lower wiper (optional)

Total versatility

- Increased stability
- Ideal for high productivity material moving
- 6 working modes
- Increased digging forces
- Built-in versatility



Komatsu Wireless
Monitoring System



Complimentary maintenance
program for customers

Fuel consumption

Based on typical work pattern collected via KOMTRAX™

Reduced by **30%** / **20%** / **5%**
(vs. PC210-8) (vs. PC210-10) (vs. HB215LC-1)

First-class operator comfort

- Wide, spacious cab
- Low noise design, low vibration levels
- Pressurised cab
- Large, widescreen TFT monitor panel
- Joysticks with proportional control button for attachments



Quality you can rely on

- Reliable and efficient
- 5 years or 10.000 h warranty on Hybrid components
- Rugged design
- Komatsu-quality components
- Extensive dealer support network



Third generation-proven technology Komatsu Hybrid system



An electric swing motor is used in place of the usual hydraulic swing motor and is designed to recover energy during swing braking.



New engine fully complies with EU Stage IIIB and EPA Tier 4 interim



Eco-gauge, idle caution and adjustable idle shut-down to further reduce fuel consumption

Hydraulic Excavator

HB215LC-2

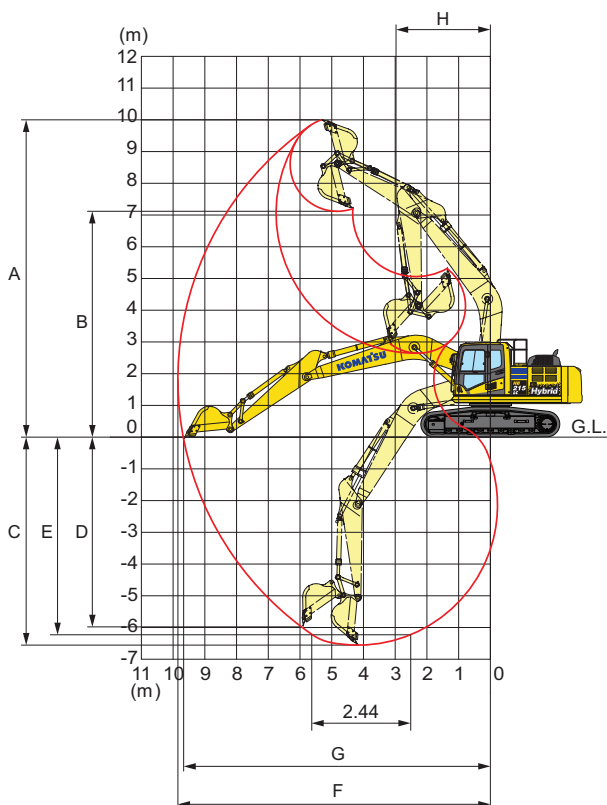
ENGINE

Model Komatsu SAA4D107E-2
 Type Common rail direct injection, water-cooled, emissionised, turbocharged, after-cooled diesel
 Engine power
 at rated engine speed 2.000 rpm
 ISO 14396 110 kW / 148 HP
 ISO 9249 (net engine power) 104 kW / 139 HP
 No. of cylinders 4
 Bore x stroke 107 x 124 mm
 Displacement 4,46 ltr

ENVIRONMENT

Engine emissions Fully complies with EU Stage IIIB and EPA Tier 4 interim exhaust emission regulations
 Noise levels
 LwA external 102 dB(A) (2000/14/EC Stage II)
 LpA operator ear 69 dB(A) (ISO 6396 dynamic test)
 Vibration levels (EN 12096:1997)*
 Hand/arm $\leq 2,5 \text{ m/s}^2$ (uncertainty $K = 0,51 \text{ m/s}^2$)
 Body $\leq 0,5 \text{ m/s}^2$ (uncertainty $K = 0,30 \text{ m/s}^2$)
 * for the purpose of risk assessment under directive 2002/44/EC, please refer to ISO/TR 25398:2006.

WORKING RANGE



UNDERCARRIAGE

Construction X-frame centre section with box section track frames
 Track assembly
 Type Fully sealed
 Shoes (each side) 49
 Tension Combined spring and hydraulic unit
 Rollers
 Track rollers (each side) 9
 Carrier rollers (each side) 2

HYDRAULIC SYSTEM

Type HydrauMind. Closed-centre system with load sensing and pressure compensation valves
 Main pump Variable-capacity piston pump
 Pumps for Boom, arm, bucket and travel circuits
 Maximum pump flow 452 ltr/min
 Hydraulic motors:
 Travel 2 x axial piston motor with parking brake
 Relief valve settings:
 Implement 380 bar
 Travel 380 bar
 Pilot 33 bar

ARM LENGTH

2,9 m

A	Max. digging height	10.000 mm
B	Max. dumping height	71.10 mm
C	Max. digging depth	6.620 mm
D	Max. vertical wall digging depth	5.980 mm
E	Max. digging depth of cut for 2,44 m level	6.370 mm
F	Max. digging reach	9.875 mm
G	Max. digging reach at ground level	9.700 mm
H	Min. swing radius	3.040 mm

OPERATING WEIGHT (APPR.)

Triple grouser shoes	Operating weight	Ground pressure
600 mm	22.580 kg	0,47 kg/cm ²
700 mm	22.850 kg	0,41 kg/cm ²
800 mm	23.170 kg	0,37 kg/cm ²
900 mm	23.440 kg	0,33 kg/cm ²

Operating weight, including mono boom, 2,9 m arm, 0,8 m³ bucket, operator, lubricant, coolant, full fuel tank and the standard equipment.