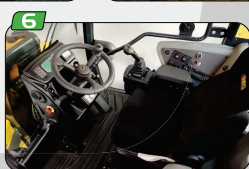
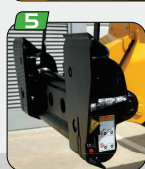
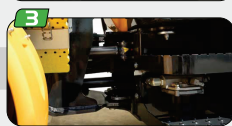
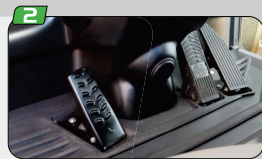
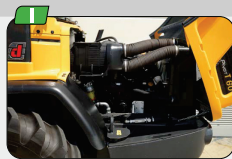


- 1 Rear endothermic motor installed longitudinally
- 2 Inching pedal: maximum control
- 3 Double-pin articulated joints
- 4 Rear oscillating axle
- 5 ISO 24410 universal-type equipment coupling
- 6 Internal cab view
- 7 Long Life sealing gaskets: on all the pins



www.dieci.com

Dieci S.r.l. - Via E. Majorana, 2-4 - Montecchio Emilia (RE) ITALY
 Tel. +39 0522 869611 - Fax +39 0522 869798 - E-mail: info@dieci.com

DIECI



AGRI PIVOT

PERFORMANCE	T40	T50	T60	T70
Operating load with standard bucket and quick connection (kg)	4950	5470	6020	7000
Standard bucket capacity (litre)	0,75	0,85	0,95	1,10
Breakout force (kN)	4075	4550	4800	6000
Maximum negotiable gradient	60%	70%	80%	80%
Traction force (kN)	3400	4200	4700	6000
Max speed (km/h)	22	30	40	40

BOOM	T40	T50	T60	T70
Times in seconds				
Lifting	7,3	5,8	5,4	5,3
Descend	3,8	2,7	2,9	3,0
Extension	2,5	2,3	2,5	2,3
Retraction	1,4	1,1	1,3	1,2
Tilt (Recall)	2,2	1,9	1,9	2,1
Tilt (unloading)	1,8	1,3	1,3	1,3

Patented compensation system

ENGINE	T40	T50	T60	T70
Brand	KUBOTA	YANMAR	YANMAR	KUBOTA
Maximum power kW (hp)	36,5 (50)	50 (68)	55 (75)	85 (115)
Speed setting (rpm)	2700	2500	2500	2600
Operation	4 stroke Diesel	4 stroke Diesel	4 stroke Diesel	4 stroke Diesel
Injection	Direct mechanical	Direct mechanical	Direct electronic	Direct electronic
Number and arrangement of cylinders	4, vertical in line	4, vertical in line	4, vertical in line	4, vertical in line
Displacement (cm³)	2615	3319	3319	3769
Specific consumption (g/kWh)	235	248	254	227
Intake	Natural	Natural	Turbo compressor	Turbo compressor
Cooling system	Liquid	Liquid	Liquid	Liquid
Starting	WETS	12	12	12

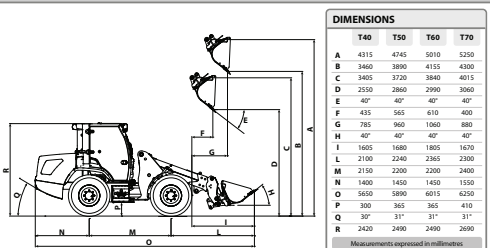
HYDRAULIC PLANT	T40	T50	T60	T70
Gear pump with capacity at max. speed (l/min)	65	98	114	114
Max operational pressure (Bar)	260	260	260	230

TRANSMISSION	T40	T50	T60	T70
Hydrostatic transmission with variable capacity pump and hydrostatic engine with automatic adjustment	•	•	•	•
Number of gears, forward/reverse	2/2	2/2	4/4	4/4
Servocontrolled 2-speed gearbox	No	No	•	•
Inching pedal for controlled advancement	•	•	•	•

DIFFERENTIAL AXLES - STEERING	T40	T50	T60	T70
Rigid Axle: 2, with planetary gearheads	•	•	•	•
Front axle fixed to the frame	•	•	•	•
Oscillating rear axle with total range	25°	25°	25°	25°
Service brake on or both on the front servo controlled axle	•	•	•	•
Parking brake with negative operation	•	•	•	•
Articulated frame steering, total steering angle	80°	80°	80°	80°
Servo controlled steering through hydraulic steering gear (Load Sensing)	•	•	•	•

TYRES	T40	T50	T60	T70
Tyres	12,5 - 18	14,5 - 20	405/70 - 20	16/70X24
Alternative	385/70R18	485/70R20	420/75R20	460/70X24
Alternative	405/70R18	500/45 - 20	500/45 - 20	500/45-20,5
Alternative	500/45 - 20	600/40 - 22,5	600/40 - 22,5	600/50-22,5

REFUELLING (litres)	T40	T50	T60	T70
Hydraulic plant (total)	70	78	80	115
Fuel tank	75	100	100	140

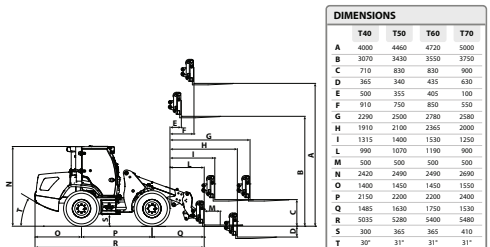


DIMENSIONS	T40	T50	T60	T70
A	4315	4745	5010	5350
B	3460	3890	4155	4300
C	3405	3730	3840	4015
D	2550	2860	2990	3060
E	407	407	407	407
F	435	565	610	400
G	785	960	1060	880
H	407	407	407	407
I	1665	1680	1805	1820
L	2100	2240	2365	2300
M	2150	2200	2200	2400
N	1480	1450	1450	1550
O	5650	5890	6015	6250
P	300	365	365	410
Q	307	317	317	317
R	2420	2490	2490	2690

Measurements expressed in millimetres

PERFORMANCE	T40	T50	T60	T70
Tipping load with aligned machine (retracted boom) (kg)	3600	3850	4050	4600
Tipping load in max articulated position (retracted boom) (kg)	3200	3400	3575	4050
Tipping load with aligned machine (extended boom) (kg)	2100	2400	2350	2300
Tipping load in max articulated position (extended boom) (kg)	1850	2000	2050	2350

Data for machines with quick attachment

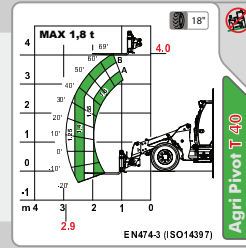


DIMENSIONS	T40	T50	T60	T70
A	4000	4460	4720	5000
B	3070	3430	3550	3750
C	710	830	830	900
D	365	340	435	630
E	500	355	405	100
F	910	750	850	550
G	2290	2500	2780	2580
H	1910	2100	2365	2000
I	1315	1400	1530	1250
L	990	1070	1190	900
M	500	500	500	500
N	2420	2490	2490	2690
O	1400	1450	1450	1550
P	2150	2200	2200	2400
Q	1485	1620	1710	1530
R	5035	5280	5400	5480
S	300	365	365	410
T	307	317	317	317

Measurements expressed in millimetres

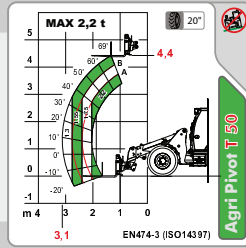
PERFORMANCE	T40	T50	T60	T70
Operative load EN474.3 (80% retracted) (kg)	1800	2200	2250	3000
Operative load EN474.3 (80% retracted) (kg)	1500	1900	1925	2250
Operative load EN474.3 (80% extended) (kg)	1250	1300	1300	1650
Operative load EN474.3 (80% extended) (kg)	950	1000	1050	1300

Data for machines with quick attachment



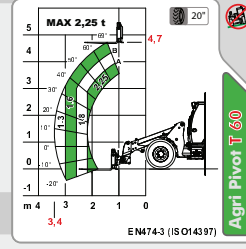
EN474-3 (ISO14397)

Agri Pivot T40



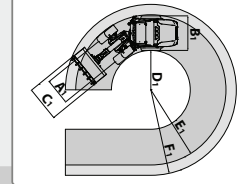
EN474-3 (ISO14397)

Agri Pivot T50



EN474-3 (ISO14397)

Agri Pivot T60



DIMENSIONS	T40	T50	T60	T70
A1	1350	1430	1430	1560
B1	1675	1880	1880	1980
C1	1700	1900	2000	2100
D1	2120	2060	2060	2400
E1	3830	4010	4010	4450
F1	4370	4570	4670	5000

Measurements expressed in millimetres