

8R/8RT SERIES

DRIVEN BY THE NEED FOR MORE



JOHN DEERE

NOTHING RUNS LIKE A DEERE

GIVING YOU WHAT MATTERS MOST



Breathtaking performance, with a cab second to none, optimum comfort, low cost of operation and maximum uptime. These are the things that you tell us matter most. And they are all embodied in the latest John Deere 8R and 8RT Series tractors.



CONTENTS

Introduction	2
Overview	4
Tractor Efficiency	6
Engines	8
AutoPowrTransmission	10
e23 Transmission	12
More traction, ILS and Tyres	14
Ballasting	16
8RT Tracked Tractors – Tracks	18
8RT Tracked Tractors – Driving Comfort	20
CommandView III Cab	22
Intuitive Controls	24
Settings Manager	26
Driving Comfort (ILS, HCS, Active Seat)	28
LED Lighting	30
PTO, Hydraulics and Hitches	32
Advanced Guidance and Precision Farming Solution	34
Manure Sensing	37
Connectivity Inside	38
Parts & Service	40
Non-agricultural Applications	42
Specifications	44
Editions & Connectivity Packages	51

POWER TO DO MORE

High power density coupled with a high horsepower rating (up to 450 max engine hp with IPM) gives you speed and efficiency. Extensive hitch and PTO options also make the 8R Series tractors extremely versatile.

LOW RUNNING COSTS

Lifetime DPF and long service intervals.

COMFORT

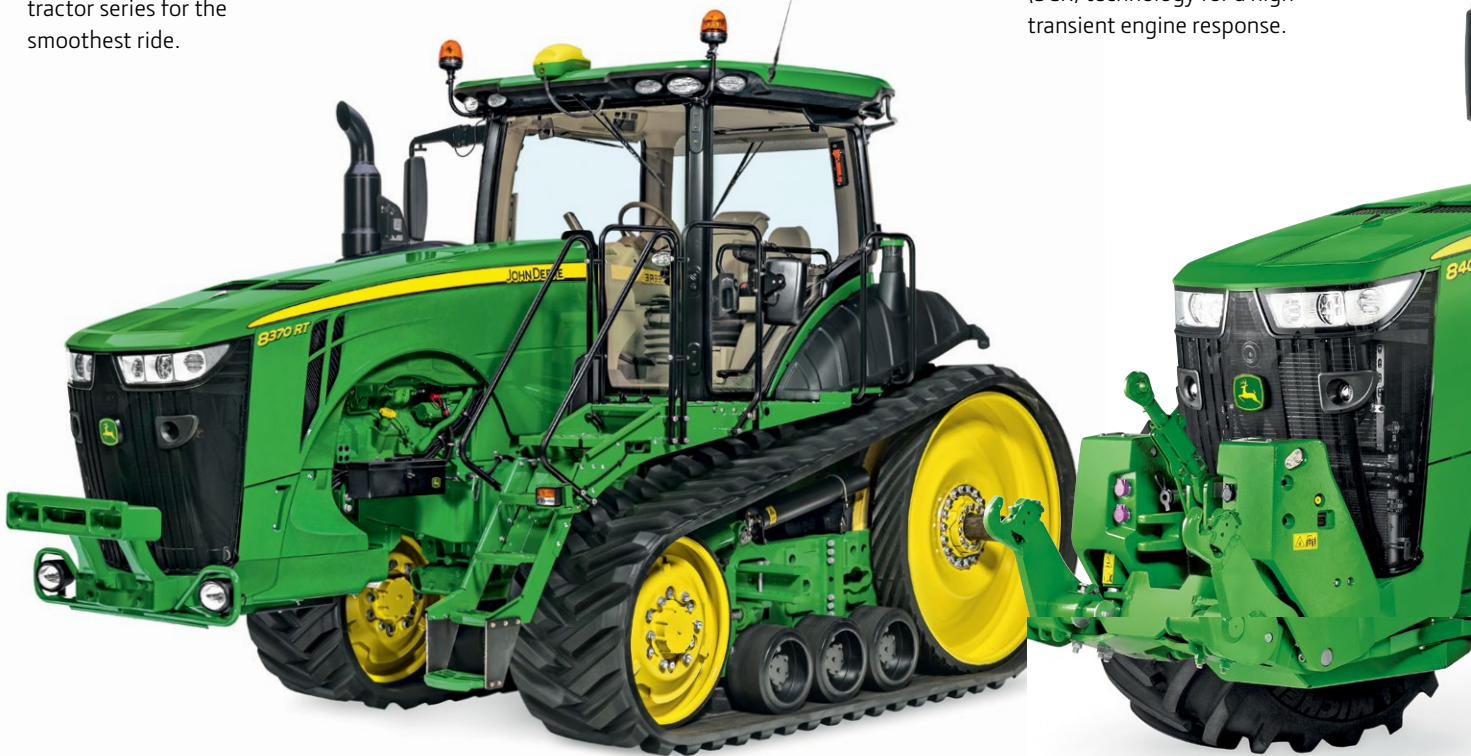
Comfortable and quiet cab with sensationally low 68 dB(A).

COMFORT IN TOUGH CONDITIONS

AirCushion suspension on 8RT tractor series for the smoothest ride.

PERFORMANCE

Efficient 9.0 l engine with high power outputs, Diesel Particulate Filter (DPF) and Selective Catalytic Reduction (SCR) technology for a high transient engine response.



TRACKS BUILT TO LAST

Camso Durabuilt tracks provide increased tear resistance.

ROBUST IN EXTREME CONDITIONS

Heavy duty polyurethane mid-rollers generate less heat under high loads and offer extended life.

PERFORMANCE & SERVICE LIFE

Optimised lug geometry for maximum guiding surface increases performance for hillside applications.

PRECISION AGRICULTURE

The StarFire 6000 receivers come with an improved signal range. The all-new SF3 signal features in-season repeatability at +/- 3 cm accuracy.

EASY TO USE

Generation 4 CommandCenter with 10 inch touchscreen.

RAPID SOFTWARE UPDATES

Improved accuracy and signal stability of Triple StarFire 6000 even in shaded conditions.

360° ILLUMINATION

22 LED lights provide optimum visibility.

RIDE & DRIVE QUALITY

Independent Link Suspension (ILS) plus ActiveSeat or cab suspension and ActiveCommand Steering (ACS) system.

STRONG HYDRAULICS

Six rear SCVs, enough lift capacity for all jobs plus 90 l oil take-out capacity.

POWER OF CHOICE

16-speed PowerShift, super-efficient e23 transmission or stepless AutoPowr.

PERFECTLY BALANCED

The 2.15 m tyres provide excellent power transfer with a perfect weight split of 55:45.



UNPRECEDENTED EFFICIENCY

The 8R uses far less fluids than any other tractor in its class according to the independent DLG PowerMix test.

MODEL	RATED ENGINE HORSEPOWER (97/68EC)	MAX. ENGINE HORSEPOWER WITH IPM (97/68 EC)	ENGINE TYPE	TRANSMISSION OPTIONS: 1 – e23 TRANSMISSION 2 – AUTOPOWER 3 – 16-SPEED POWERSHIFT (EXCEPT RT MODELS)
8245R	245	290	9.01 PSS	1/2/3
8270R	270	316	9.01 PSS	1/2/3
8295R	295	332	9.01 PSS	1/2/3
8320R/RT	320	368	9.01 PSS	1/2/3
8345R/RT	345	394	9.01 PSS	1/2
8370R/RT	370	420	9.01 PSS	1/2
8400R	400	450	9.01 PSS	1

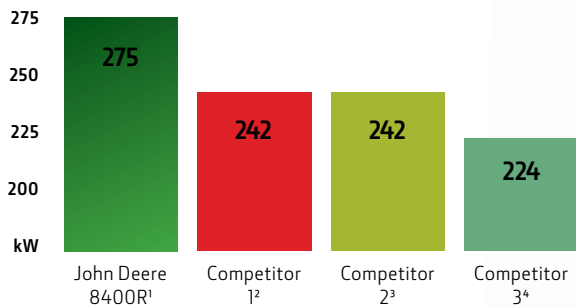
OUTSTANDING EFFICIENCY

How much power does a tractor actually deliver?
 Engine specification in the market can be deceiving.
 What matters is the power that is transmitted to the ground and to the PTO.

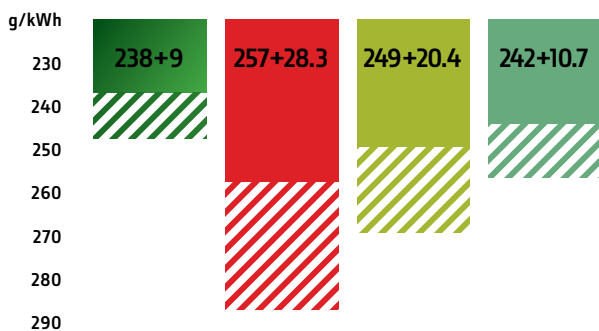


8400R MAXIMUM DRAWBAR PERFORMANCE

8400R DRAWBAR POWER



8400R DIESEL & DEF CONSUMPTION (DLG POWERMIX)



**Rated Power
 (97/68 EC):
 400 hp (294 kW)**

¹ DLG Test 9/2016, Test Nr. 2016-00253, www.dlg.org /figures do not include Boost
² OECD Test 06.2015, Test-Nr. 2126, <http://tractortestlab.unl.edu>/figures do not include Boost; Profi 8.2016 www.profi.com
³ Profi 8.2013, www.profi.com
⁴ Profi 8.2015, www.profi.com



LESS LOSSES, HIGHER PULLING POWER

The impressive efficiency of John Deere 8R and 8RT tractors deliver up to 94% overall tractor efficiency.

The compact cooling package (1) without compromise on cooling surface, has an excellent airflow with no restrictions. The 9.0 I engines offer superior torque and fuel economy under all conditions. You can count on the high transmission (2) efficiency of e23 PowerShift and AutoPowr. And finally, the axle design and wide tyres (3) up to 2.15 m deliver more power to the ground.

POWERFUL HEART

GET THE JOB DONE IN ANY CONDITIONS

John Deere PowerTech PSS 9.0 I turbocharged engines meet the latest Stage IV emission regulations with integrated emissions control, while reducing operating costs and boosting performance.



COOLED EXHAUST GAS RECIRCULATION (EGR)

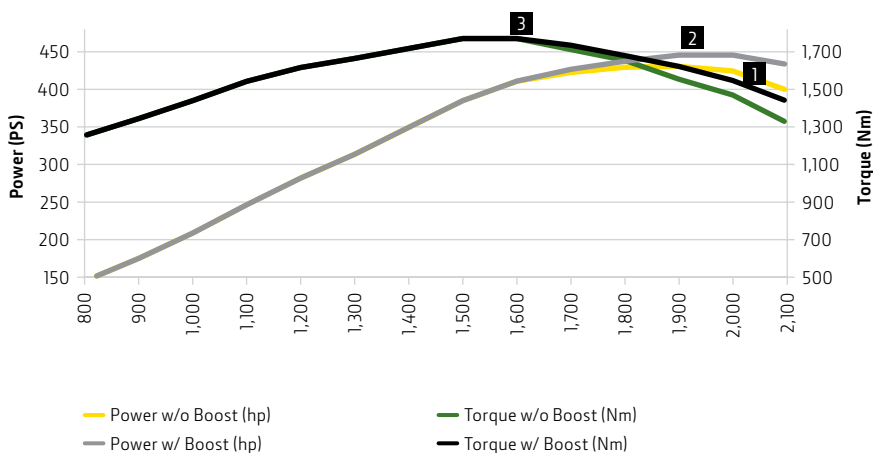
Precise amounts of cooled exhaust gases are mixed with incoming fresh air, lowering combustion temperatures to lower NOx output while further reducing emissions.

8400R PULLING PERFORMANCE THANKS TO OUTSTANDING ENGINE CHARACTERISTICS

The 9.0 I engine in the 8R Series Tractors delivers a torque rise of up to 40% and an outstanding power bulge of up to 10%. The peak torque is available at the ideal engine rpm within the wide constant power range to ensure tremendous pulling performance.

CATALYSED EXHAUST FILTER WITH DOC/DPF

The Diesel Oxidation Catalyst (DOC) and Diesel Particulate Filter (DPF) remove particles down to 2.5 µm.



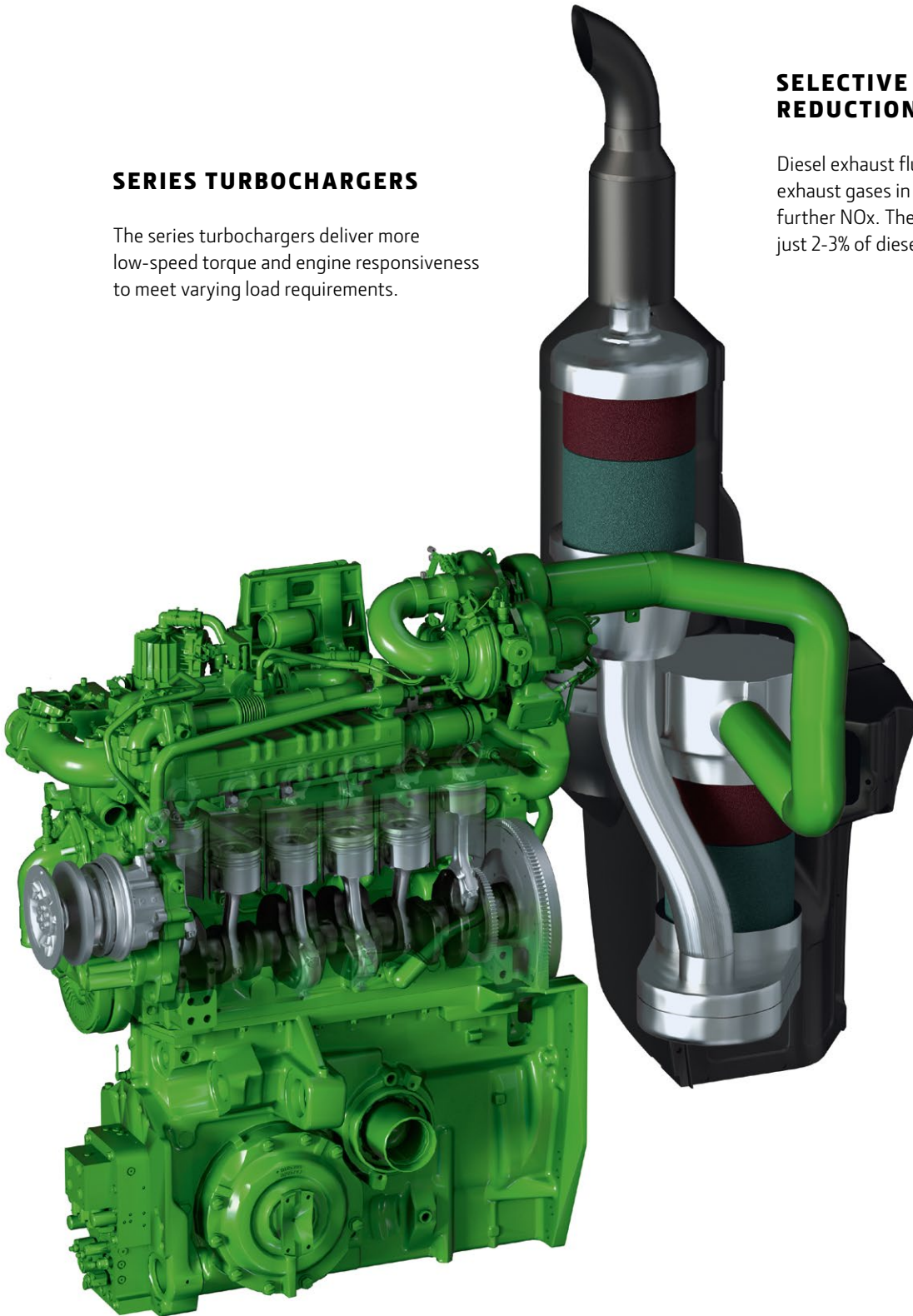
Intelligent Power Management (1) provides up to 35 additional hp for transport and PTO applications. Max. power with 450 hp @ 1,900 rpm (2) and max. torque of 1,806 Nm @ 1,600 rpm (3) ensure optimum response with low fuel consumption levels.

SERIES TURBOCHARGERS

The series turbochargers deliver more low-speed torque and engine responsiveness to meet varying load requirements.

SELECTIVE CATALYTIC REDUCTION (SCR)

Diesel exhaust fluid mixes with engine exhaust gases in the catalyst to reduce further NOx. The DEF consumption is just 2-3% of diesel use.



IMPROVED PISTON DESIGN

The new top of the range 8400R has a new piston design which enables the achievement of higher power levels without any impact on the durability of the proven 9.0 l engines. In addition, you gain higher fuel efficiency with better heat rejection of the pistons.

HIGH-PRESSURE FUEL SYSTEM

Benefit from low total fluid consumption and very fast engine response time at load changes thanks to the high-pressure fuel system.

VARI-COOL

Vari-Cool precisely controls the speed of the fan in relation to the cooling requirements to maximise the efficiency of the engine and to save fuel.

THE POWER OF CHOICE: AutoPowr TRANSMISSION

The 8R Series Tractors offer a range of transmission options to tackle the challenges of your operations: AutoPowr infinitely variable transmission, and e23 PowerShift transmission.

AUTOPOWR: FOUR MODES

There are four modes available in AutoPowr: Full Auto, Custom, Manual and Pedal mode, which enables you to control ground speed separately from the engine.

AUTOPOWR TRANSMISSION WITH AUTOCLUTCH

With the AutoClutch you can simply depress both brakes and the transmission ratios down to a stop from any ground speed without using the clutch pedal.

AUTOPOWR: SMOOTH SHIFTING

AutoPowr lets you shift smoothly from start-up to maximum speed with a single lever and absolutely no clutching. Just choose a specific speed and AutoPowr keeps it steady by automatically responding to changing load conditions.

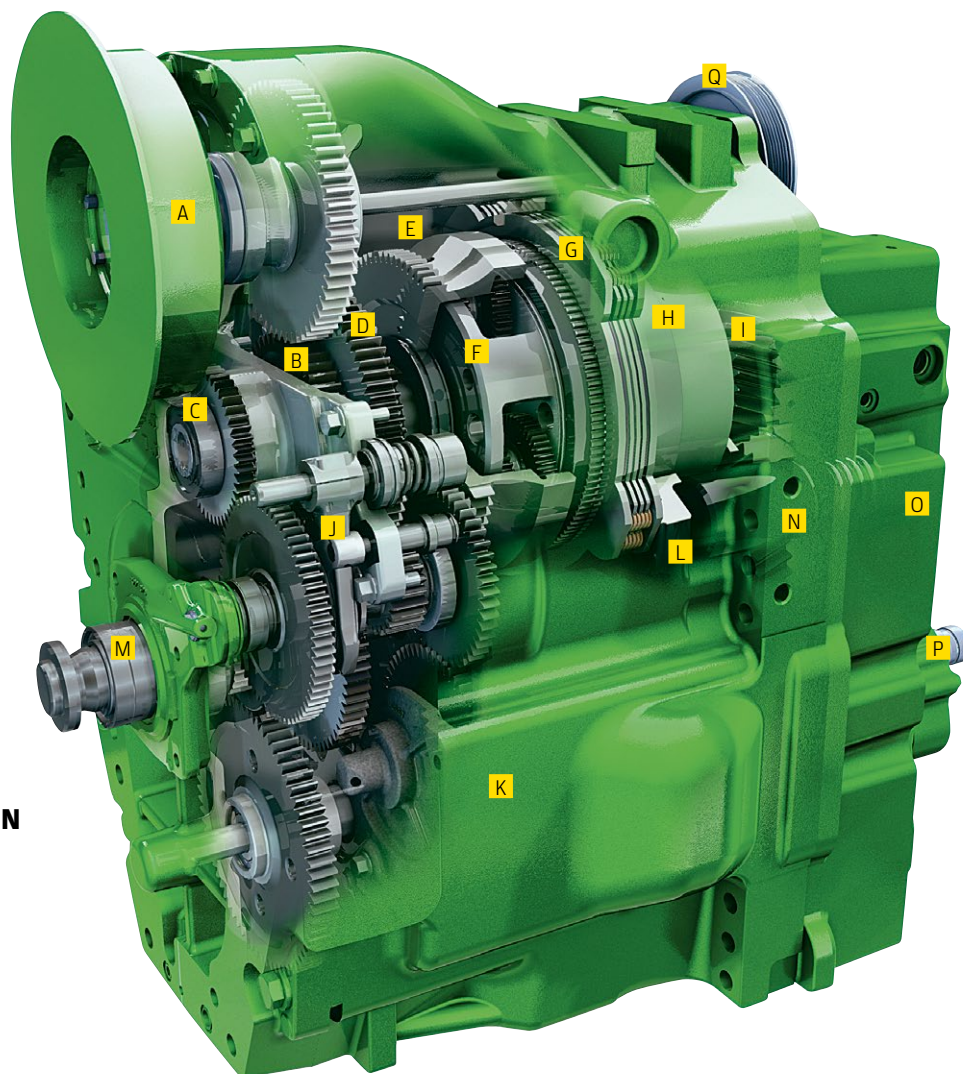


AUTOPOWR AUTOMATIC RESPONSE

AutoPowr lets you smoothly start-up, achieving maximum speed with absolutely no clutching. Top speed 40 km/h at 1,360 rpm and 50 km/h at 1,630 rpm for low transport cost.

INFINITE SPEED ADJUSTMENT IN ALL SITUATIONS

AutoPowr delivers stepless and continuous power across an infinitely variable range of speeds, controlled by a single lever.



AUTOPOWR INFINITELY VARIABLE TRANSMISSION

- A – Engine Input Shaft
- B – First Sun Drive Gear
- C – Second Sun Drive Gear
- D – Planetary Carrier Drive Gear
- E – Front Compound Planetary Unit
- F – Planetary Carrier Assembly
- G – Reverse Brake Planetary Unit
- H – Hi & Low Clutches
- I – Planetary Output Gear
- J – C2/C1 Drive Shifter Assembly
- K – Hydrostatic Module
- L – MFWD Clutch
- M – MFWD Output Shaft
- N – Park Brake
- O – Rear Differential Output
- P – PTO & Pump Drive Output Shaft
- Q – Auxiliary Drive Output

AUTOPOWR: OUTSTANDING EFFICIENCY

The exclusive John Deere built AutoPowr transmission with four ranges always ensures a maximum mechanical power transfer in all speed ranges. With 55%-100% of mechanical power flow, the AutoPowr transmission boosts the efficiency of the tractor and gets more power to the ground. The reduced hydraulic part has other positive effects: a lower oil cooling requirement, a higher mechanical percentage of power transfer and with that, improved fuel efficiency.

EASY TO OPERATE: e23 TRANSMISSION

We offer you the flexibility to choose the right transmission to fit your needs: e23 transmission is engineered to deliver maximum efficiency for arable farming. Alternatively choose full PowerShift (16/5) or the intuitive functionality of AutoPowr infinitely variable transmission.

e23 INDUSTRY LEADING TECHNOLOGY

e23 combines all the benefits of a mechanical transmission with the ease of use of an AutoPowr. 10 fully powershiftable gears in the main working range (5-16 km/h) for maximum pulling power on the field at the right rpm.

16-SPEED POWERSHIFT

The 16-speed PowerShift transmission is available for the smaller models up to the 8320R with 16 forward and 5 reverse speeds.



e23 TRANSMISSION

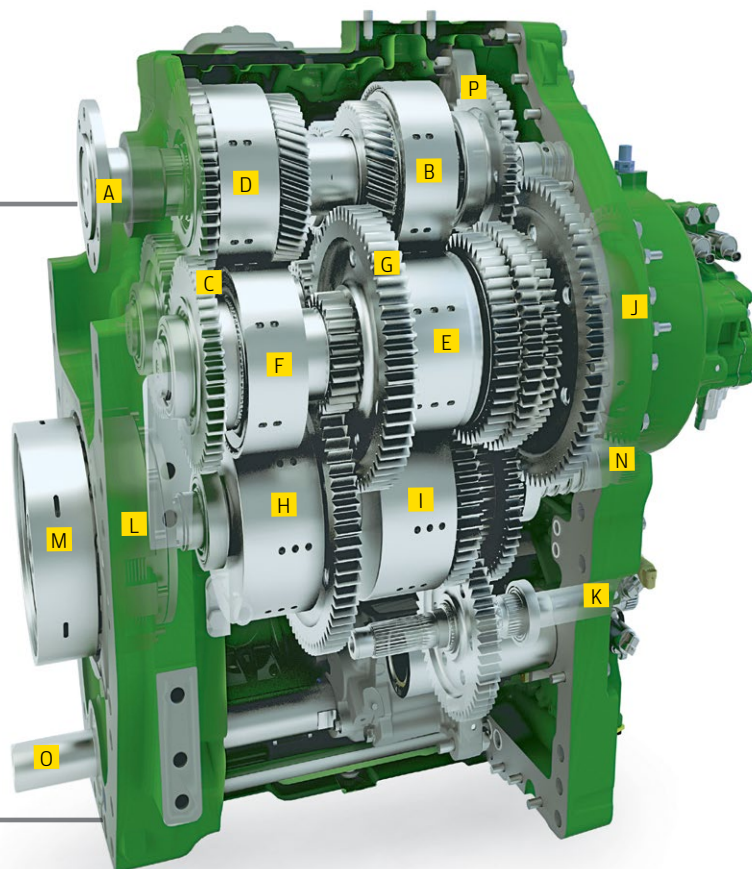
- A – Engine Input Shaft
- B – Low Clutch
- C – High Clutch (not visible)
- D – Reverse Clutch
- E – Speed Clutches S1
- F – Speed Clutches S4
- G – Speed Clutches S3 & S4 (not visible)
- H – Hi & Low Clutches
- I – Range Clutches R2
- J – Range Clutch R3
- K – Hydraulic Pump & Rear PTO Drive Shaft
- L – Park Brake
- M – MFWD Clutch
- N – Rear Differential Output
- O – Front PTO Drive Shaft
- P – Auxiliary Drive

e23 TRANSMISSION WITH AUTOCLUTCH

With the AutoClutch you can simply depress both brakes and the transmission ratios down to a stop from any ground speed.

e23 TRANSMISSION WITH EFFICIENCY MANAGER

Efficiency Manager allows the operator to preset the working speed and helps to save fuel by keeping the engine rpm at an optimum speed by automatically shifting up and throttling back.

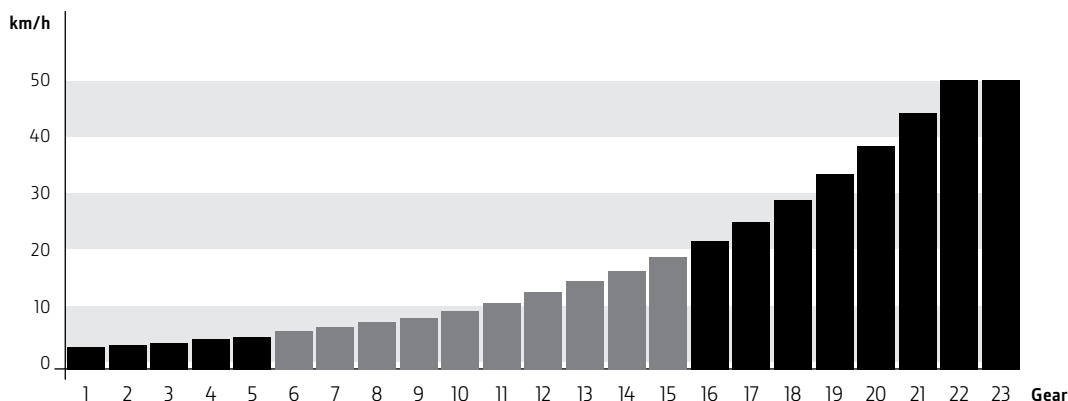


**e23: TOP SPEED
40 KM/H AT
1,410 RPM AND
50 KM/H AT
1,670 RPM FOR
FUEL SAVING
IN TRANSPORT.**

TOP FIELD PERFORMANCE

Ten gears in the main working range from 5-16 km/h provide the ideal gear for the most demanding pulling application, resulting in high field performance.

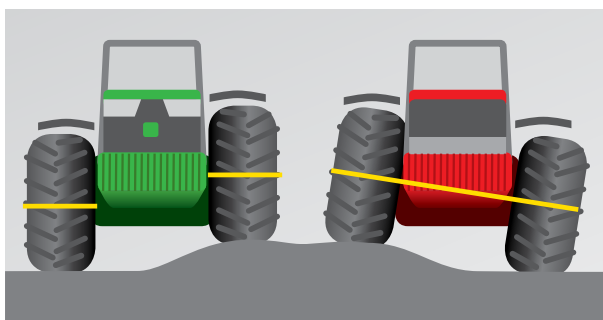
TEN FULLY POWERSHIFTABLE GEARS IN THE MAIN WORKING RANGE



MORE TRACTION

Better traction means increased productivity. The structural chassis of the 8R Series has been designed for unprecedented power density. With a robust chassis, Independent Link Suspension (ILS) providing extra drawbar pull, and a long wheelbase for additional traction and stability, John Deere 8R tractors allow you to do more, even in tough conditions.





INDEPENDENT LINK SUSPENSION (ILS)

ILS automatically adjustable independent front axle suspension is designed to maximise power transfer to the ground for higher productivity even in very rough terrain.

WHEELBASE (A)

3,050 mm

OVERALL LENGTH (B)

6,820 mm maximum length,
measured from rear hitch to front hitch

TOTAL HEIGHT (C)

3,677 mm maximum height,
measured with 215 cm (SRI 1025) rear tyres

WIDTH (D)

2,550 mm with 710/70R42 tyres and
narrowest tread setting



TYRES

John Deere offers a variety of tyre options for a wide range of field and transport applications. Select 2.15 m diameter rear tyres for better power transfer and higher ground clearance. You will also get sufficient traction with less ballast, reducing soil compaction and increasing the payload.

PERFECTLY BALANCED

8R Series tractors are designed with a perfect 55:45 weight split. Wide ballasting options are available if required and can be easily installed and removed.

BALLASTING FLEXIBILITY

With the ever-increasing costs of fuel, correct weight distribution and flexible ballasting play an increasingly important role in driving productivity and performance. John Deere 8R Series tractors offer several options to provide the optimum balance.



DOUBLE FLAT REAR AXLES

The new double flat rear axle design has now replaced the single flat axle design on all 8R models. It is fitted with new double flat wheel hubs and newly designed ductile iron drive wheels which provide higher clamp force and better durability. They can also be retrofitted with 900 kg rear wheel weights.





FRONT SUITCASE WEIGHTS (50 KG)

These weights can easily be mounted/dismounted to the front weight support. They support an optimised weight distribution between the rear and front axle, as the amount of weights being used can be quickly adapted to current application requirements.

REAR WHEEL WEIGHTS

Rear wheel weights enable correct ballasting of the rear axle for improved traction. They can be mounted on the outside of wheels. With cast wheels they can also be mounted on the inside (except for 900 kg). Available with 70 kg, 205 kg, 625 kg (inner only) and the 900 kg.

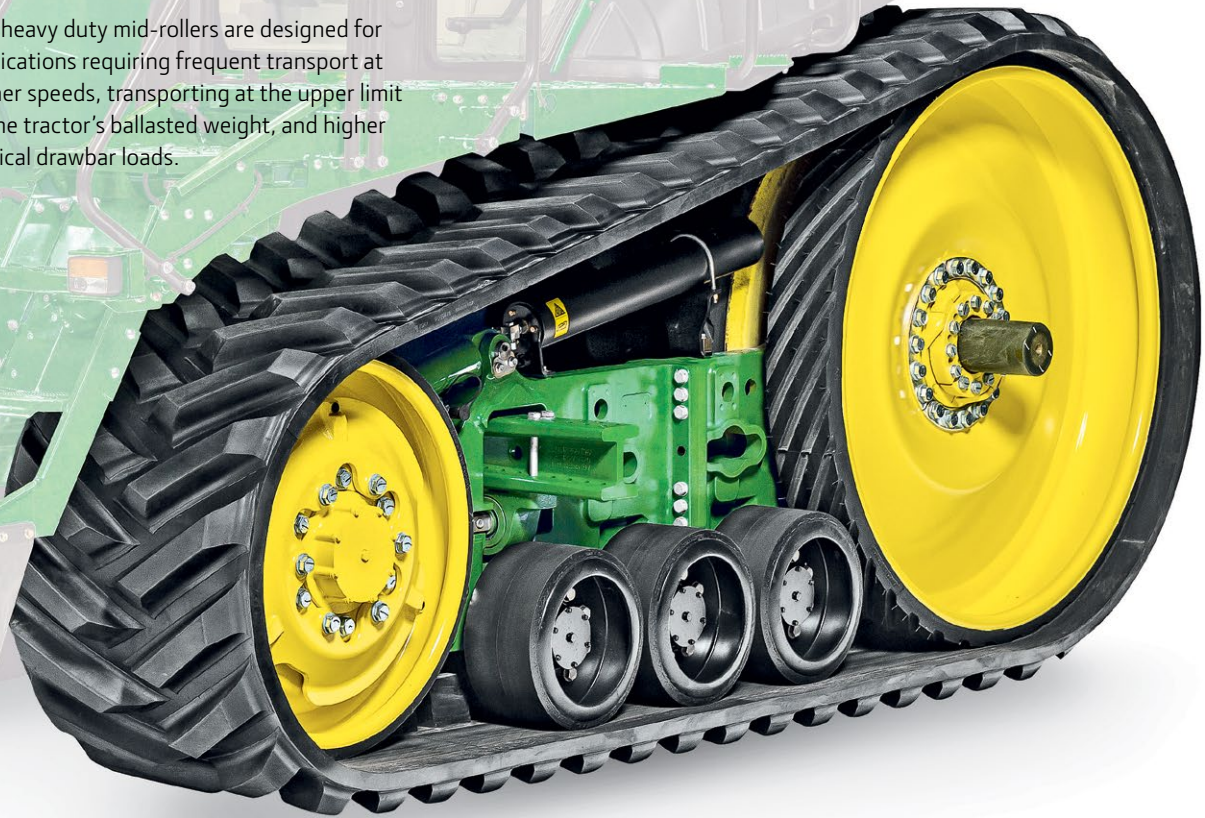


PICK-UP WEIGHTS

Pick-up weights help you get the perfect balance and improve the tractive performance of your 8R. Available in 900 kg, 1,150 kg, 1,500 kg and 1,800 kg versions, they can be mounted to the front hitch and the front weight support (900 & 1,150 kg only).

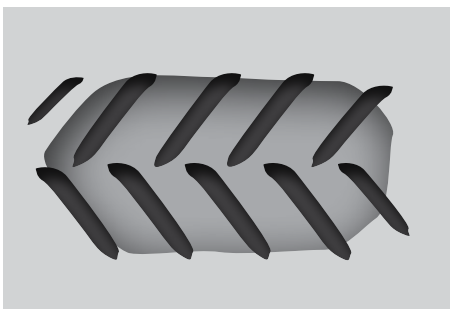


The heavy duty mid-rollers are designed for applications requiring frequent transport at higher speeds, transporting at the upper limit of the tractor's ballasted weight, and higher vertical drawbar loads.



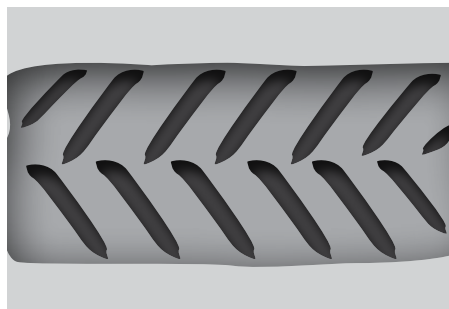
LARGE FOOTPRINT FOR MAXIMUM TRACTION

John Deere 8RT Series tracked tractors give you a wide range of operating speeds with AutoPowr or e23 transmission, with consistent performance at the lower end of the range. A variety of track sizes is available according to application requirements.



WHEELED TRACTOR

Smaller contact point, weight is distributed unevenly resulting in compaction.



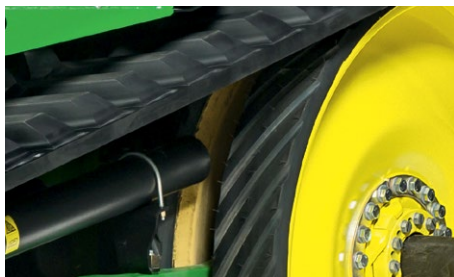
8RT TRACKED TRACTOR

Larger footprint helps to spread weight more evenly, minimising soil compaction and maximising traction.



MOULDED DRIVE WHEELS

Drive wheels are moulded with a chevron tread pattern. This pattern helps to improve and maintain friction force between the drive wheel and track belt in a wide variety of applications.



LOW RISK OF DERAILING

The inline tension arm and alignment mechanism built into John Deere 8RT tractors virtually eliminates the risk of belt derailing.

WHEELBASE (A)

2,515 mm

OVERALL LENGTH (B)

6,471 mm / 6,912 mm overall length, measured from the rear hitch to the front weight support without / with front weights

TOTAL HEIGHT (C)

3,558 mm overall height, measured from the ground to the top of the beacon light

WIDTH (D)

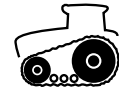
2,743 mm overall width, measured at the rear axle, end to end

ADJUSTABLE TREAD WIDTHS

8RT Series tracked tractors feature inboard planetary final drives to allow adjustable tread widths. Minimal time and no additional spacers are required when adjusting tread width within a given axle configuration.



STEP INSIDE YOUR COMFORT ZONE



Your comfort is our priority. The impressive AirCushion suspension on 8RT Series tractors isolates the cab from the bumps of uneven terrain and provides the smoothest of rides for the operator both in the field and at transport speeds.





AIRCUSHION SUSPENSION

AirCushion suspension isolates the chassis from harsh inputs due to uneven terrain. The entire system is fully automatic and requires no operator adjustment. This system also allows the vehicle to travel much faster over rough ground while maintaining operator comfort.

For maximum reliability and traction, the 8RT undercarriage system uses large drive wheels and mid-rollers.

- A – Air Bag
- B – Damping Cylinder
- C – Swing Arm / Walking Beam
- D – Track Frame
- E – Track Tension Cylinder
- F – Accumulator
- G – Rear Drive Wheel
- H – Mid-Rollers
- I – Front Idler
- J – Track Belt
- K – Pivot Point
- L – Track Guide Lugs
- M – Track Alignment Adjustment

TRACK BELT OPTIONS

John Deere offers the Camso Durabuilt® 4500 and 6500 Series rubber track options exclusively in a range starting from 400 mm (16 in.) up to 760 mm (30 in.) widths. The Durabuilt 6500 Series track is the most durable for 8RT tractors. It provides improved rubber and more woven steel threads for extended tread and guide-lug life in severe applications.

ULTIMATE CONTROL

When you climb into the CommandView III cab the first thing you notice is the space you have and the premium fit and finish quality. Thanks to the laminated glass and front sound barrier, you will enjoy less noise intrusion. The sensationally low 69 dB(A) make for a more relaxed day.

Visibility is also better than ever, especially when you rotate the seat 40 degrees for a nearly unobstructed view of your attachment. The key tractor functions for the transmission and engine controls and for the PTO and SCV operations are ergonomically placed on the CommandARM console.



ACTIVECOMMAND STEERING (ACS)

ActiveCommand Steering reduces steering effort at headlands and gives superior handling capabilities during transport speeds.

- DYNAMIC ROAD WHEEL OFFSET CONTROL

keeps your tractor on track with minimal effort. It automatically adjusts the road wheel angle.

- VARIABLE RATIO STEERING

provides light, agile steering at slower speeds, and heavier steering for higher speeds. ACS automatically reduces to 3.5 lock-to-lock steering wheel turns for quick headland manoeuvres and lowers hand wheel motion to 75%.

- FULL ELECTRONIC STEERING CONTROL

removes all the drawbacks of a conventional steering column-to-wheel setup. It reduces vibration significantly, and eliminates free play completely.





WIDE ANGLE MIRRORS

Optional wide-angle mirrors with power telescoping provide a wider field of vision. They are also heated for greater visibility even in cold or foggy conditions.



40 DEGREE SWIVEL SEAT

Visibility and comfort is better than ever, especially when you rotate the seat 40 degrees for an almost unobstructed view of your attachments. You will feel the difference after a day of work.

INTUITIVE CONTROLS

The 8R Series makes sophisticated agricultural technology easy to operate. Everything is within easy reach on the CommandARM control stack and clearly visible on the Generation 4 CommandCenter.

EASE OF USE

Navigation is made easy with logical menus and a comprehensive shortcut bar. With Quick Line you can now record an AB line with just one button press.

TAILOR YOUR 8R TO YOUR NEEDS

Select the 4100 CommandCenter (7") with CommandCenter AutoTrac or choose the 4600 CommandCenter (10") which also allows you to upgrade to the CommandCenter Premium activation.

ISOBUS AEF CERTIFIED

The Generation 4 CommandCenter is AEF ISOBUS compliant, you can control your ISOBUS-ready implement through Universal Terminal (UT) and run automatic section control through Task Controller (TC-SC, TC-BAS) – depending on the AEF certification level of the implement.

EVEN FASTER ACCESS TO ADVANCED FUNCTIONS

The CommandCenter functions just like a tablet with touch-screens: navigating through the options is simplified via menus, shortcuts and with context-sensitive help. And you can run our field proven mainstream AMS solutions.

EASY SCV CONTROL

On the CommandARM, the selective control valve levers and couplers in the back of the tractor are colour-coded to simplify recognition. For convenience, all SCVs can be operated via easy to reach SCV control levers. All SCV levers can be easily reconfigured and stored individually for each application with the new Settings Manager.

EXTENDED MONITOR

The new Gen4 Extended Monitor doubles the screen area so you can monitor more functions at once and have direct access to make adjustments when needed. For example you can view vehicle control functions on your primary display and Precision Ag applications on the Extended Monitor.



DOCUMENTATION MADE EASY

The 4600 CommandCenter is connected to the Operations Center on MyJohnDeere.com through Wireless Data Transfer. You can conveniently send setup files from office to field and applied maps and totals from field to office.

VIRTUALLY IN THE CAB

You or your John Deere dealer can remotely log on to the Generation 4 CommandCenter to assist operators with machine and ISOBUS implement setup and operation. In addition, on-screen help files enable operators to become familiar with all functions.



FIELD-PROVEN AUTOTRAC

Fit a StarFire 6000 receiver with AutoTrac activation and you're ready for hands-free steering. Choose between three accuracy levels: SF1: +/- 15 cm; SF3: +/- 3 cm delivering in-season repeatability; RTK: +/- 2.5 cm delivering long term repeatability.

- 1 – Transmission shift lever with thumb wheel for speed adjustment
- 2 – SCV control lever lock / ISOBUS shortcut button
- 3 – Rear hitch control lever
- 4 – SCV control levers
- 5 – Set speed 1 & 2
- 6 – AutoTrac resume button and 4 iTEC sequence buttons
- 7 – Hand throttle, ECO-function, foot pedal lock button, FieldCruise ON/OFF button
- 8 – Differential lock & mechanical front-wheel drive (MFWD)
- 9 – Generation 4 CommandCenter featuring a 7 or 10 inch touchscreen, the Gen 4 CommandCenter is your state-of-the-art interface with the tractor and enables you to run field-proven AMS solutions such as AutoTrac
- 10 – Shortcut keys/buttons for fast operator access to specific functions
- 11 – Joystick with lock button configurable with tractor functions to operate front and rear SCVs and/or front and rear hitches via the axles and with AutoTrac activation, iTEC sequence activations, gear shifting (e23) and ISOBUS push-button functions via the buttons 5-9
- 12 – Climate, radio and lighting controls
- 13 – PTO control levers
- 14 – Secondary brake lever

TAILOR IT TO YOUR NEEDS

All the daily tasks an operator needs to manage during his job require different functions and levers to be operated at the same time. With the new generation of 8R Series tractors, almost everything could be reconfigured on the CommandARM to meet the desires and requirements of the operator and his application.

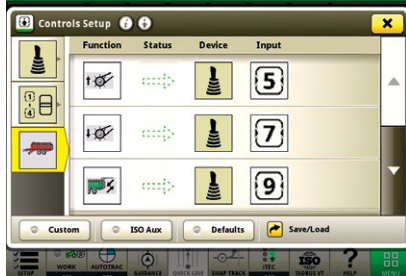
Instead of SCV "1" you would like to operate the front hitch next to the rear hitch lever – no problem! Entering the Control Setup enables you to reconfigure all hydraulic functions on the joystick or on the SCV levers. For even more operator comfort, ISOBUS driven implements can be operated via the push buttons on the joystick. For the ultimate level of reconfigurability, easily

set functions like, AutoTrac activation, iTEC sequences and gear-shifting to the joystick push buttons or SCVs, whereas the SCVs, front and rear hitches can be set to the axles of the joystick. And the best: you can set up and recall all your settings individually per implement in the Settings Manager.



- A** – Axles available for:
 - SCV controls
 - Front/Rear hitches
- B** – Rocker switch available for:
 - SCV controls
 - Front/Rear hitches
- C** – Push buttons 5-9 available for:
 - AutoTrac assisted steering system
 - iTEC headland management sequences 1-4
 - ISOBUS push button functions
 - Gear shift (e23 only)





CONTROL SETUP FOR ISOBUS FUNCTIONS ON ELECTRICAL JOYSTICK

For using ISOBUS push functions on the electrical joystick, the operator can select the buttons of the electrical joystick in the CommanCenter.

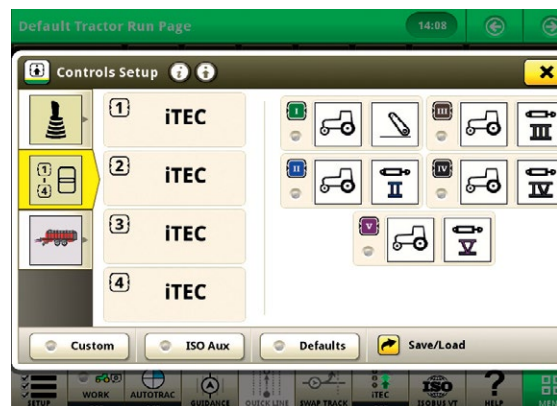
COMMANDARM – CONTROLS SETUP IN THE COMMANDCENTER

The operator can choose from different functions for the CommandARM controls: iTEC sequences 1-4, SCV control or Front/rear hitch.



DEFAULTS FUNCTION IN THE CONTROL SETUP

The operator also has the possibility to set all reconfigured controls (custom) for the paddle pods and the electrical joystick back to the factory settings (default) in the settings.



SETTINGS MANAGER

Reducing the set up time for all your different applications the Settings Manager allows you to save all your machine settings, for example; engine, SCVs and rear hitch as well as configuration settings for the electrical joystick. This allows you to instantly recall your individual settings for implements or operators.

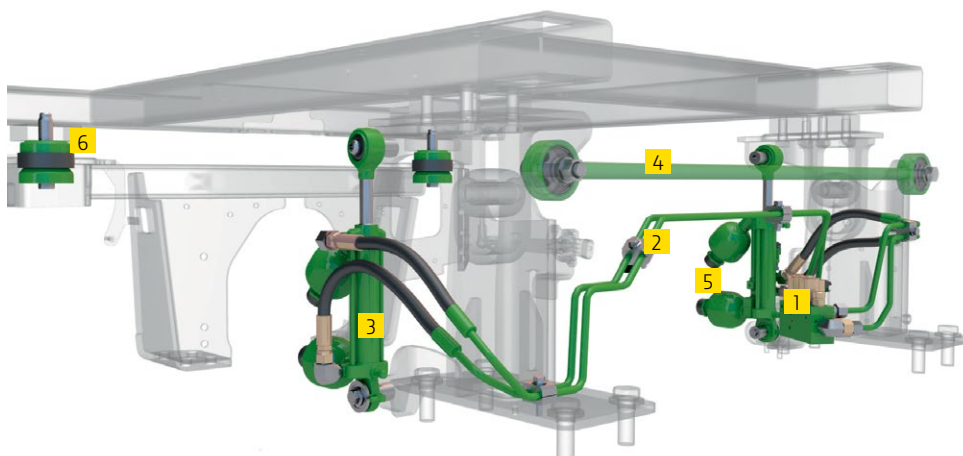
A SMOOTH RIDE

John Deere Independent-Link Suspension (ILS) brings enormous gains to your productivity in the field and on the road. It increases transport and field productivity with superior stability and higher comfort.

The John Deere ActiveSeat or the adaptive Hydraulic Cab Suspension (HCS Plus) allows the operator to increase productivity and decrease the effects of fatigue.

ADAPTIVE HYDRAULIC CAB SUSPENSION (HCS PLUS) – A MORE RELAXED DAY

Adaptive Hydraulic Cab Suspension (HCS Plus) adjusts to changing ground conditions and requires no programming for road or field applications.



- 1 – Cab Levelling Control Valve
- 2 – Cab Levelling Control Valve Lines
- 3 – Hydraulic Cylinder
- 4 – Panhard Rod
- 5 – Accumulator
- 6 – Cab Mount



ACTIVESEAT

The ActiveSeat utilises electro-hydraulic technology in combination with air suspension. ActiveSeat isolates up to 90 percent of vertical movements and provides the operator with enhanced ride-quality over standard air suspension seats.

- A – Scissor Suspension
- B – Air Reservoir
- C – Accelerometer
- D – ActiveSeat Actuator
- E – Air Compressor & Air Spring
- F – Accumulator



INDEPENDENT LINK SUSPENSION (ILS)

Advanced independent axle suspension, especially in combination with HCS+ or ActiveSeat, ensures exceptional driving comfort. This innovative design incorporates proven suspension design with mechanical front-wheel drive (MFWD) axle components that use state-of-the-art technology specifically for heavy equipment usage. The ILS system gets more power to the ground because the front tyres maintain ground contact pressure. This improves field and transport ride plus increases ballasting flexibility and drastically decreases the tendency to power hop.



FOR YOUR CONVENIENCE, ALL LIGHTING IS EASILY CONTROLLED VIA THE COMMANDCENTER.

BASE LIGHTING

- 1 Six front grille-mounted halogen lights
- 2 Twelve cab roof-mounted halogen lights
- 3 Two rear fender-mounted lights
- 4 Two rear turn signal and brake/tail lights
- 5 Two front corner lights & two belt-line lights
- 6 LH rotary beacon light

PREMIUM LIGHTING

All halogen lights will be replaced by LED lights (except for two low beam road lights).

OPTIONAL

- 7 Two extremity lights
- 8 Two loader/driving lights
- 9 RH Rotary beacon light

YOU'VE NEVER SEEN ANYTHING LIKE IT!

UP TO 26 LIGHTS PROVIDE 360° VISIBILITY

The LED option provides 40% greater coverage to the side-view and 10% greater rear-view coverage. The LED lighting on John Deere 8R/8RT Series tractors provides high quality white illumination for easier visibility and contrast. There are 22 LED lights providing 360° visibility.

Result: night becomes day, putting less strain on the eyes.

LEDs are virtually indestructible, with a minimum 10,000 hours life expectancy and high resistance to vibration and extreme temperature.



**WORKING LIGHTS WISELY INTEGRATED
INTO THE FRONT, REAR AND SIDES OF THE
ROOFLINE TO PREVENT POSSIBLE DAMAGE
FROM LOW HANGING BRANCHES.**

ULTIMATE HYDRAULIC PERFORMANCE

The hydraulics in 8R/8RT Series tractors give you exactly the power you need at the precise moment you need it. Up to six selective control valves at the rear and up to two at the front, and power all the way up to a benchmark 321 l/min in the 8R, drive even the largest implements at fuel saving reduced rpm (227 l/min at 1,500 rpm). Take-out capacity is 40 l as standard and 90 l with the optional auxiliary tank.



EFFORTLESS HITCH CONTROL

Hitch controls are located in the CommandCenter: electronic sensors instantaneously relay information to the control module for fast and accurate corrections. Controls can also be accessed on the rear fender extensions.

REAR PTO

8R Series tractors have several PTO options, such as the 1000/1000E PTO option, available to provide the versatility and flexibility needed to satisfy all implement demands at this power level.

INDEPENDENT REAR SELECTIVE CONTROL VALVES

8R and 8RT Series tractors offer four, five or six rear electro-hydraulic SCVs with adjustable flow rates, timed detents, and breakaway couplers. The 8R and 8RT Series Tractors feature precise control of the SCVs hydraulic flow, enabling operators to fine-tune flow rates for any application in the CommandCenter. For the ultimate hydraulic output, the 8R/8RT offer the high-flow coupler option, providing four 1/2 inch and one 3/4 inch coupler, which delivers an outstanding flow rate of up to 160 l/min.



FRONT HITCH AND SCVS

The optional front hitch offered for 8R tractors has a maximum lift capacity at the hooks of 5,200 kg. One or two independent iTEC capable front SCVs are available, with adjustable flow rates and detent times.

MORE ATTACHABILITY

The front and rear hitches are iTEC-compatible for total implement management. Electronic sensors relay information to the hitch control module for instantaneous and accurate corrections.

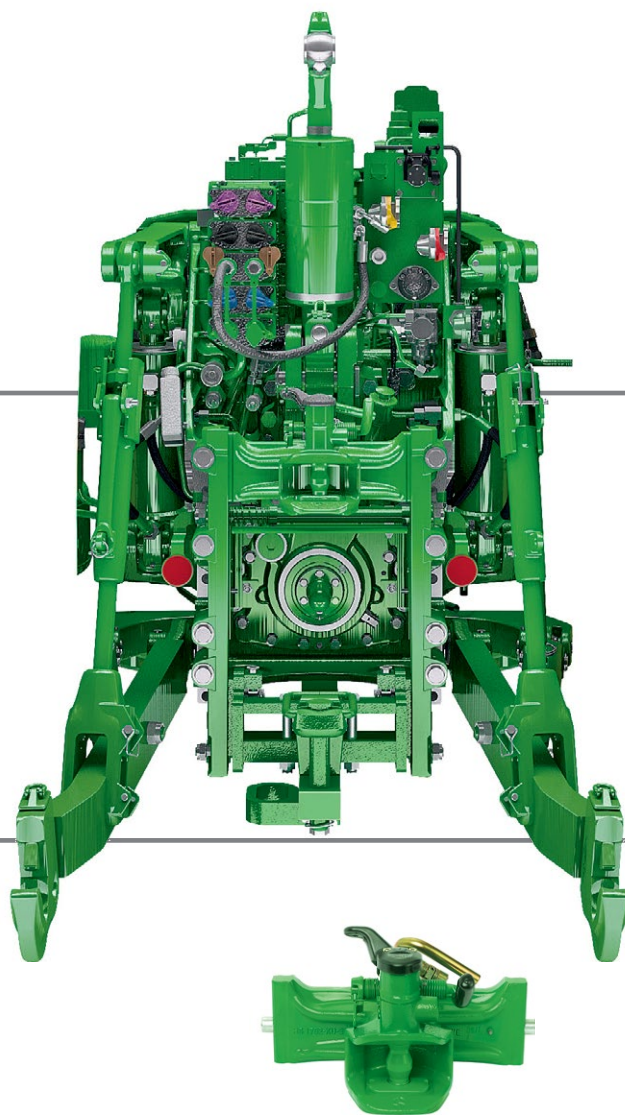
REAR HITCH-LIFT CAPACITY

The 8R offers many different hitch options to complement different application needs all the way up to 12,124 kg.



DRAWBAR HITCHES

For a robust connection to pulled implements a drawbar can be equipped to the 8R Series tractors. An adjustable drawbar with a category 3 pin (38 mm) fulfils the needs of most implements. The optionally available category 4 and category 4 heavy duty drawbars feature a 50 mm pin and allow vertical loads of up to 4,990 kg.



REAR HITCH OPTIONS

8R Series tractors offer a variety of rear hitch options to complement application needs: lower lift capacity for lighter implement applications as well as higher lift capacity for heavier implements.



BALL-TYPE AND PITON FIX HITCHES

These hitches are height adjustable, perfect for trailer operation and many other implement applications. When used in low position, they provide optimum traction and driving dynamics of tractor/trailer combinations. The 80 mm ball hitch allows vertical loads of up to 4,000 kg.



AUTOMATIC WAGON HITCH

Makes attaching implements much more convenient compared to manual wagon hitches.



FORCED STEERING SYSTEM

For even higher versatility our hitches can be equipped with a forced steering system to operate large trailers with steering axles.



MAKE THE MOST OF YOUR DAY

AUTOTRAC

AutoTrac hands-free steering adds more comfort: It reliably steers your tractor from day to night, through dust or on hilly terrain. This prevents costly overlaps or gaps and enables every operator to run at peak performance. With the Generation 4 CommandCenter and a StarFire receiver, all you need is a CommandCenter AutoTrac activation and you're ready to start. Using AutoTrac you can expect up to 8* percent input savings and up to 14** percent productivity increase.

The new StarFire 6000 receiver

Fascinating with yet a new level of accuracy, signal stability and repeatability:

RTK WITH 2.5 CM

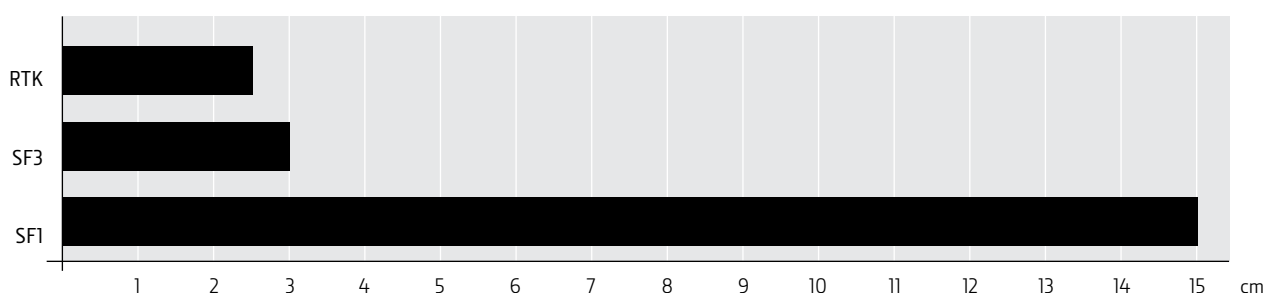
pass-to-pass accuracy, featuring long-term repeatability including 14 days RTK Extend if you lose line of sight or mobile network.

SF3 ENABLING 3 CM

pass-to-pass accuracy and 9 month in-season-repeatability.

IMPROVED SF1 WITH 15 CM

pass-to-pass accuracy, free of charge.



*From 'Lohnunternehmen' 1/2010
**From 'Landtechnik' 6/2006

COMMANDCENTER 4600 DISPLAY

With the CommandCenter 4600 Display, you can easily upgrade to the CommandCenter Premium Activation, adding section control and documentation functionality at any time. This configuration will also allow you to leverage the benefits of wireless data transfer and therefore automatic data exchange with the Operations Center on MyJohnDeere.com.



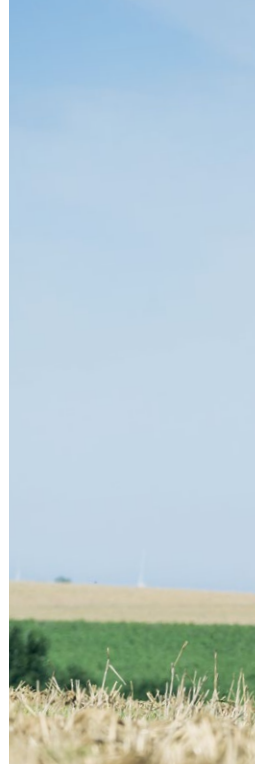
NEW

The John Deere Mobile RTK Signal can be operated via the machine's in base JDLink system. Saving you the extra cost for a mRTK Modem and the annual cost for a SIM-card with data plan. (Dependent on country. Check with your dealer)

PERFECT RESULTS

ADVANCED GUIDANCE AND PRECISION FARMING SOLUTIONS

Take the next step in precision productivity with iTEC Pro enhancing AutoTrac with automated headland turns. And spray, spread and seed with perfection even on wedged-shaped fields using John Deere Section Control.



iTEC PRO

Enjoy picture-perfect headlands with consistent crop growth and reduced soil compaction. iTEC Pro fully automates headland turns, taking over steering and tractor controls so you can stay relaxed.

JOHN DEERE SECTION CONTROL

John Deere Section Control minimises skips and overlaps automatically on-the-go. As a result, you can do a better job faster – and save money on fertiliser, chemicals and seed. This ISOBUS solution is available for sprayers, seeders/planters and spreaders and can control up to 255 individual sections.

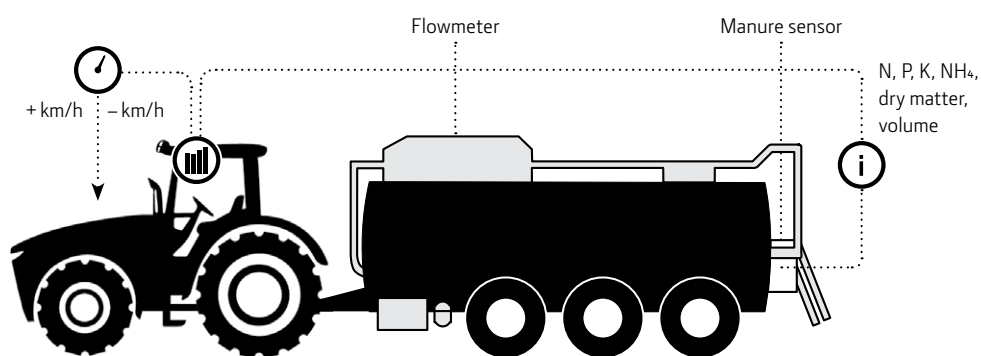




JOHN DEERE MANURE SENSING

NUTRIENTS FOR YOUR BUSINESS

Manure is a high-quality but extremely heterogeneous fertiliser. Nutrient levels can vary significantly, by up to a factor of 25 – even within one tank load. John Deere Manure Sensing enables analysis of nutrients in manure on-the-go: A NIR (Near Infrared) sensor fitted to the slurry tanker measures N, P, K, NH_4 and dry matter with more than 4,000 measurements per second. A John Deere tractor can automatically adjust its speed to increase or decrease application rates based on your desired nutrient target level and even leveraging a prescription map. This enables you to maximise yields and meet legal requirements while cutting costs on mineral fertiliser.



SITE-SPECIFIC APPLICATION

Target rate based on kg/ha N, P, K, NH_4 or volume. Limit rate for second ingredient.

TRACTOR-IMPLEMENT AUTOMATION

Automatic speed adjustment with John Deere tractors.
Manual speed adjustment with non-John Deere tractors.

SITE SPECIFIC DOCUMENTATION

Applied volume.
Applied amount of nutrients.

EASY ACCESS TO COLLECTED DATA

Nutrient maps accessible in the Operations Center on MyJohnDeere.com

YOUR GATEWAY TO BETTER BUSINESS DECISIONS

You're managing a complex enterprise. That's why optimising the overall business depends on being well connected to your ongoing operations. The Operations Center on our Ag web portal, MyJohnDeere.com, makes it simple. It connects you to your machines, your operators

and your fields from one central location. It also allows you to exchange information seamlessly with your John Deere dealer, your contractor or other trusted partners.

JD LINK

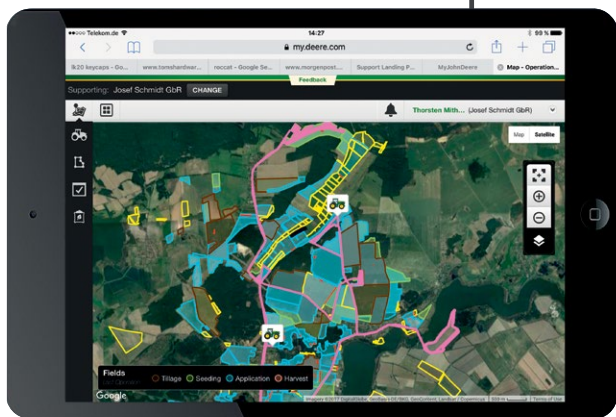
JDLink Access shows you where your machines are, what they're doing and how they perform and you or your dealer can remotely assist your operators with machine setup and operation leveraging Remote Display Access. JDLink Connect additionally includes Wireless Data Transfer for seamless data exchange between your machine and the office.



10:03					
May 2016					
Tuesday 17	Wednesday 18	Thursday 19	Friday 20	Saturday 21	
Harvest Transport 4	Seeding Transport 987 ac	Harvest Transport 1	Scouting Seeding Transport 18.37 ha	Mowing Transport 1	3
HARVEST My Ultra Field Farm 1	SEEDING 987 ac	HARVEST Farm 1	SCOUTING My Ultra Field	MOWING Farm 1	
Farm 1	TRANSPORT My Ultra Field	TRANSPORT Farm 1	SEEDING Farm 1	Harvest/Seeding...	
Farm 1	TRANSPORT My Ultra Field	TRANSPORT Farm 1	TRANSPORT My Ultra Pl... 18.37 ha	TRANSPORT Farm 1	
TRANSPORT My Ultra Field				TRANSPORT Farm 1	

JOB MANAGEMENT MADE EASY

Eliminate paperwork and endless phone calls during job planning, execution and reporting. With MyJobConnect you can assign clearly defined tasks to your operators on-the-go, utilising the MyJobsManager App. Your operators can view the work orders in real-time and execute accordingly on their mobile device. And once the job is done you have instantly accurate and complete data at hand for quicker job reporting and professional invoicing.



OPERATIONS CENTER

Go to the Operations Center to allocate exact field locations for the next jobs, track the work progress of your machines, easily assign work orders to your operators, view as-applied maps automatically sent from the field as well as create, analyse and share application reports with trusted partners and customers.



CONNECTIVITY PACKAGES

Your 8R tractor comes already pre-equipped with a suite of smart technologies that help you increase profitability, comfort and uptime while reducing cost of operation*:

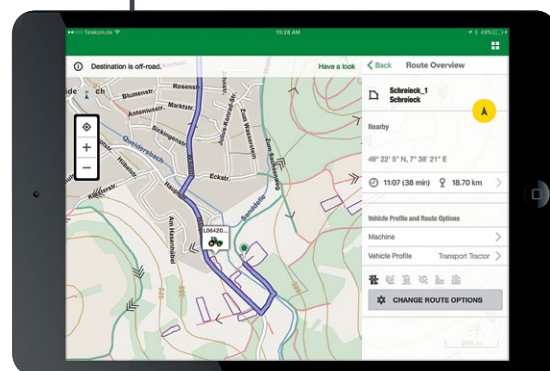
- 4600 CommandCenter with CommandCenter AutoTrac or CommandCenter Premium Activation
- 5-year free JDLink subscription
- Access to the Operations Center on MyJohnDeere.com
- Tractor-Implement Automation
- MyJobConnect or MyJobConnect Premium*

All of the above plus a FarmSight dealer Service Package to train and support you with the use of these technologies is what we have to offer for those that decide to go for Connectivity Inside. (Please see page 51 for more details)

INTELLIGENT AG NAVIGATION & FLEET LOGISTICS

Getting the right equipment at the right time to the right place is key to maximise efficiency and timeliness of multi machine operations. MyJobConnect Premium* extends MyJobConnect to a true mixed fleet logistics solution. It features fleet overview, turn-by-turn navigation based on a comprehensive field road database including estimated arrival times for vehicles at the predefined destination. For example, setting up navigation to the lead machine enables silage trailers to take the fastest and safest way to the forage harvester. It also automatically updates the directions for the entire silage trailer fleet as soon as the forage harvester moves to the next field.

*MyJobConnect Premium is only available in certain countries.



ALWAYS THERE FOR YOU. GUARANTEED

EXPERIENCE THE POWERGARD FEELING

When it comes to protecting your machines and your business, peace of mind is not something that somehow happens if you're lucky. Peace of mind is a choice that you can make.

PowerGard agreements protect you against unexpected repair costs and keep your maintenance on track with genuine parts. Three fixed rate packages provide increasingly comprehensive levels of coverage to keep your machine running at peak performance with steady uptime.

Financing

Our goal is simple: Empower you to purchase what you need to take your business to the next level. This includes financing your PowerGard agreements at competitive rates, with flexible payments.*

PowerGard Maintenance

Preventative maintenance work – it's essential for keeping equipment in good working order based on factory recommended intervals.

PowerGard Protection

Base level of protection that covers unusual events that can lead to costly repairs, less a deductible for each repair.

PowerGard Protection Plus

The ultimate in protection – the total peace of mind package that covers electrical, cooling, hydraulics and more.

*Financing for PowerGard Maintenance is currently only available with participating dealers. Country regulations apply.



FARMSIGHT SERVICES

Your dealer is at your side to ensure a quick and easy start with your new equipment. In a FarmSight package he combines a number of services that save you time and money in your operation. The FarmSight Service package that suits you is available at an attractive price. Choose the one that's right for you, and profit from efficiency gains and additional uptime hours from day one.

Ultimate

Ultimate brings training and uptime to a new level. Best of all, should a technical failure stop you in your tracks you get a back-up component at no cost.

Premium

Premium provides an easy start to documentation and a comprehensive training offer to help reduce input cost.

Select

Select services include professional training and ensure your AMS equipment is perfectly set up with your specific data.

INVESTING IN YOUR 8R PAYS DIVIDENDS

Personalise your 8R with genuine John Deere attachments. They will support you in making each working day more efficient, more convenient and less fatiguing. Designed and engineered by John Deere, you can be sure they'll fit properly and are built to last.



ADD MORE

More performance and productivity with front and rear ballasting solutions.

More versatility with genuine hitch solutions and hydraulic options.

More comfort and convenience with a wide range of mounting brackets, a refrigerator and front and rear fenders.



GENUINE FOR A REASON

Excellent parts availability.
Assured high performance quality.
Manufactured to Original Equipment standards.

MULTI-FUNCTIONAL POWER FOR NON-AG OPERATIONS

Whether it's construction, road building, forestry, winter clearance or public maintenance: John Deere 8R and 8RT Series tractors make light work of the heavy lifting.



HIGH POWER TAKE-OFF

The high PTO of 8R/8RT tractors make them ideal for heavy forestry attachments such as wood chippers and wood mulchers, as well as for road construction and soil compaction.





POWERFUL REAR HITCH

Thanks to the rear three-point hitch with a lifting capacity of up to 12,125 kg, you can lift even bigger additional loads.



AMAZING TRACTION ON TOUGH TERRAIN

"Wide soled" 8RT tracked tractors demonstrate their strength on tough, wet terrains with good traction.

SPECIFICATION 8R SERIES TRACTORS

	8245R	8270R	8295R	8320R	8345R	8370R	8400R
ENGINE PERFORMANCE							
Rated Engine Power (97/68 EC), hp (kW)	245 (180)	270 (199)	295 (217)	320 (235)	345 (254)	370 (272)	400 (294)
Rated Engine Power with IPM (97/68 EC), hp (kW)	280 (206)	305 (224)	330 (243)	355 (261)	380 (279)	405 (298)	435 (320)
Max Engine Power at 1,900 rpm (97/68 EC), hp (kW)	270 (198)	297 (218)	324 (239)	352 (259)	380 (279)	407 (299)	432 (318)
Max Engine Power with IPM at 1,900 rpm (97/68 EC), hp (kW)	290 (213)	316 (232)	342 (251)	368 (271)	394 (290)	420 (309)	450 (331)
Rated Engine Power (ECE-R24), hp (kW)	235 (173)	259 (191)	283 (208)	307 (226)	331 (244)	355 (261)	384 (282)
Max Engine Power at 1,900 rpm (ECE-R24), hp (kW)	259 (190)	285 (210)	312 (229)	338 (249)	364 (268)	391 (287)	415 (305)
Max Engine Power with IPM at 1,900 rpm (ECE-R24), hp (kW)	279 (205)	303 (223)	328 (241)	353 (260)	378 (278)	403 (296)	431 (317)
Intelligent Power Management (hp)	35	35	35	35	35	35	35
Constant Power Range (rpm)	1,500 -2,100	1,500 -2,100	1,500 -2,100	1,500 -2,100	1,500 -2,100	1,500 -2,100	1,600 -2,100
PTO Torque Rise, %	40	40	40	40	40	40	35
PTO Power Bulge, %	10	10	10	10	10	10	8
Engine Peak Torque @ 1,600 rpm (Nm)	1,147	1,264	1,381	1,498	1,615	1,732	1,806
ENGINE							
Manufacturer	John Deere Power Systems						
Type	John Deere PowerTech PSS 9.0 L (B20 Diesel Compatible), Diesel, in-line, 6-cylinder, wet-sleeve cylinder liners with 4 valves-in-head						
Rated Engine Speed, rpm	2,100						
Aftertreatment	longlife & maintenance-free diesel particle filter (DPF), Diesel oxidation filter (DOC), Selective Catalytic Reduction (SCR)						
Engine Air Filter	Dual stage with engine cooling fan aspiration						
Aspiration	Dual Series Turbocharger with fixed geometry first stage & variable geometry second stage - air-to-air aftercooling and cooled exhaust gas recirculation						
Cylinder / displacement, l	6 / 9.0						
Bore and stroke, mm	118.4 x 136						
Fuel Injection	Electronically controlled, high-pressure common rail with electric fuel transfer pump (self priming)						
Fuel filter System	Two Stage with water separator and service indicator light						
TRANSMISSION OPTIONS							
16/5-PowerShift with Automatic PowerShift (APS)							
16 Forward- / 5 Reverse Gears, right hand reverser	42 km/h @ 2,160 rpm with 205 cm tyres 42 km/h @ 2,050 rpm with 215 cm tyres				N/A		
e23 Transmission with Efficiency Manager							
23 Forward- / 11 Reverse Gears, 40 km/h, left- & right hand reverser	42 km/h @ 1,480 rpm with 205 cm tyres 42 km/h @ 1,410 rpm with 215 cm tyres						
23 Forward- / 11 Reverse Gears, 50 km/h, left- & right hand reverser	50 km/h @ 1,770 rpm with 205 cm tyres 50 km/h @ 1,670 rpm with 215 cm tyres						
AutoPowr							
Variable, 0.05 - 42 km/h, left- & right hand reverser	42 km/h @ 1,430 rpm with 205 cm tyres 42 km/h @ 1,360 rpm with 215 cm tyres				N/A		
Variable, 0.05 - 50 km/h, left- & right hand reverser	50 km/h @ 1,710 rpm with 205 cm tyres 50 km/h @ 1,630 rpm with 215 cm tyres				N/A		



	8245R	8270R	8295R	8320R	8345R	8370R	8400R	
AXLES								
Rear Axles								
120 x 2,550 mm diameter short, double flat axle with single taper hub	Base							
Flange Axle, 335 mm bolt circle	Optional						N/A	
Rear Wheel Equipment (diameter)	205 or 215 cm diameter tyres available as Single wheel configuration - See dealer for tyre size selection and limitations							
Front Axles								
ILS - Independent Link Suspension	Base							
ILS - suspension travel	+/- 125 mm at tread centerline for 5 step ratio axle at 1,880mm tread							
ILS with front brakes	Base							
Differential Lock								
Differential Lock - Rear Axle	Full-locking electro-hydraulic							
Differential Lock - Front Axle	Full-locking electro-hydraulic (actuated at same time as rear diff-lock)							
ELECTRICAL SYSTEM								
Alternator/Battery	200 amps / 12 Volt							
Total cold cranking amps	1,850 (2 batteries in parallel - 925 CCA, group 31 batteries)							
STEERING								
Type	Tilt-telescope steering console with Memory function							
Hydraulic power-steering with electric pump back-up	Base - 406 mm Steering Wheel Diameter with 18.9 : 1 Ratio and 4.3 Turns from Lock to Lock							
Active Command Steering (ACS) with electric pump back-up	Optional - 345 mm Steering Wheel Diameter, 15:1 - 23:1 Variable ratios depending on speed; 3.1 - 5.0 Turns from Lock to Lock; with Dynamic Road Wheel Offset Control and passive tactile feedback							
HYDRAULIC SYSTEM								
Type	Closed-centre, pressure & flow compensated system (PFC) with load sensing							
Main pump, axial piston (displacement)	Base: 85 cm ³ ; Optional: Dual pump 85 cm ³ plus 35 cm ³							
Maximum pressure	204 bar / 300 kPa							
Rear Selective control valves with 1/2 inch ISO couplers	4 / 5 / 6							
Rear Selective control valves with 3/4 inch and 1/2 inch ISO couplers	max. 5 available (SCV 1 : 3/4 inch coupler, SCV 2-5 : 1/2 inch couplers)							
Rated flow, 85 cm ³ pump, l/min	227							
Rated flow, Dual Pump 85 cm ³ plus 35 cm ³ , l/min	321							
Maximum flow at a single Rear SCV, l/min	1/2 inch coupler: 132; 3/4 inch coupler: 159							
Front SCV's	1 SCV in base with Front Hitch, 2 SCV's optional with Front Hitch							
Available flow at Front SCV's, l/min	96							
Oil Take out capacity in base / optional with auxiliary tank, l	40 / 90							
Power beyond couplers	Optional; 1/2 or 3/4 inch couplers							
REAR HITCH								
Type	Electro-hydraulic Lower Link Sensing; load & depth control, infinite mix, float							
Category	3/3N or 4N/3			4N/3				
Coupler System	Walterscheid Hook Style Ends							
Lift capacity through full lift range, (610 mm behind the coupler, OECD)	Base - 6,800 kg - Cat. 3/3N Option - 8,165 kg - Cat. 3/3N Option - 9,000 kg - Cat. 4N/3			Base - 9,000 kg - Cat. 4N/3				
Maximum Lift Capacity, (measured at the coupler jaw)	Base - 9,480 kg - Cat. 3/3N Option - 10,960 kg - Cat. 3/3N Option - 12,125 kg - Cat. 4N/3			Base - 12,125 kg - Cat. 4N/3				
Lower Link Stabilization	Sway Blocks or Deluxe Sway Stabilizers							
Centre Link	Option - Hydraulic Centre Link - Cat. 3 (90 mm) Option - Hydraulic Centre Link - Cat. 4 (120 mm)			Option - Hydraulic Centre Link - Cat. 4 (120 mm)				

	8245R	8270R	8295R	8320R	8345R	8370R	8400R
DRAWBAR & TRAILER HITCH							
Swinging Drawbar	Cat. 3 with 38 mm pin / Cat. 4 with 50 mm pin						
Maximum Vertical Load (Please check country specific limitations)	1,837 kg with Cat. 3, 2,245 kg with Cat. 4, 4,990 kg with Cat. 4 HD						
3-in-1-hitch, with Cat. 3 / Cat. 4 drawbar	Optional						
Wagon hitch, mechanical or automatic, for 3-in-1-hitch	Optional						
Ball Hitch, for 3-in-1-Hitch	Optional						
Piton Fix Hitch, for 3-in-1-Hitch	Optional						
Pick-up hitch, with hook and Cat. 3 drawbar	Optional						
FRONT HITCH, OPTIONAL							
Type	Ground Engaging Front Hitch						
Category	3N						
Maximum lift capacity	5,200 kg						
REAR PTO							
Type	Independent, Electro-hydraulic switched via oil-cooled multi-disc clutch						
PTO 1,000 rpm - Engine rpm @ rated PTO speed*	1,995						
PTO 1,000 / 1,000E rpm - Engine rpm @ rated PTO speeds*	1,995 / 1,590						
PTO 540 / 1,000 rpm - Engine rpm @ rated PTO speeds*	1,810 / 1,950					N/A	
Stub 1-3/4 in. (45 mm diameter), 20-spline, 1,000 rpm	Base						
Stub 1-3/4 in. (45 mm diameter), 20 spline, 1,000 / 1,000E rpm gearcase, shiftable in cab via the CommandCenter	Optional						
Stub 1-3/4 in. (45 mm diameter), 20-spline, 1,000 rpm; capable of 1-3/8 in. (35 mm diameter) 540 / 1,000 rpm gearcase	Optional					N/A	
*The engine speeds will vary minimal depending on the transmission type of the tractor.							
FRONT PTO, OPTIONAL							
Type	Electro-hydraulic switched via oil-cooled multi-disc clutch (Requires ILS axle and AutoPowr or e23 Transmission)						
PTO 1,000 rpm - Engine rpm @ rated PTO speed	2,000						
Stub 1-3/4 in. (45 mm diameter), 20-spline, 1,000 rpm, Clockwise Rotation	Optional						
Stub 1-3/8 in. (35 mm diameter), 21-spline, 1,000 rpm; Clockwise Rotation	Optional						
Stub 1-3/8 in. (35 mm diameter), 6-spline, 1,000 rpm, Counter-Clockwise Rotation	Optional						
CAB							
Specifications	CommandView III Cab, LH Panorama Door, Automatic Air Conditioning and Generation 4 CommandCenter Display						
Suspension System	Optional - Hydraulic Cab Suspension Plus (HCS Plus) or John Deere exclusive ActiveSeat						
Noise level, dB(A)	69						
Cab glass area, m ²	6.5						
Cab volume, m ³	3.6						
Display	Generation 4 Command Center 4100 with 7 inch or 4600 with 10 inch Touchscreen Display, optional Extended Display						



	8245R	8270R	8295R	8320R	8345R	8370R	8400R
MISCELLANEOUS							
GreenStar Ready							Base
ISOBUS Implement Connection							Base
AutoTrac Ready							Base
JDLINK with Ethernet Harnesses for CommandCenter							Base
ServiceADVISOR Remote, capable with JDLINK Access & Connect							Optional
Modular Telematics Gateway (MTG)							Base
Video input in CommandCenter for camera							1 Video input for 4100 Display, 4 Video inputs for 4600 Display, Using PAL or NTSC signal
Immobiliser							Optional (check country availability)
Trailer Brake System							Optional; Pneumatic Dual Line System incl. Air Dryer or Hydraulic Dual Line System
CAPACITIES							
Fuel tank, with 205 cm tyres, l							615
Fuel tank, with 215 cm tyres, l							675
DEF tank, l							23
Cooling System, l							32.6
Engine oil capacity, l							27.5
Transmission, Differential, Hydraulic system, l							165
ILS wheel hubs, each, l			3.8				5.6
DIMENSIONS AND WEIGHTS							
Wheelbase, mm							3,050
Overall Length, mm							
Maximum length, measured from rear hitch to front hitch							6,820
Minimum length, measured from rear hitch to front weight support (less weights)							6,095
Overall Height, mm							
Maximum height, measured with 215 cm (SRI 1025) rear tyres							3,677
Minimum height, measured with 205 cm (SRI 975) rear tyres							3,540
Overall Width, mm							
Overall width ¹							2,602
Flange to Flange width							1,892
Rear Axle, End to End ²							2,550
Ground Clearance, mm							
Front Axle Clearance							590
Drawbar clearance ³							376
Bottom Rear Axle ³							762
Turning Radius							
with 600/70R30 group 43 tyres @ 78" spacing, ILS, m							5.8
with 600/70R30 group 43 tyres @ 74.1" spacing ILS, m (-2.5 m overall width)							6.1
with 650/60R34 group 44 tyres @ 82" spacing ILS, m (-2.73 m overall width)							6.3
Weights							
Average Shipping Weight, kg ⁴							13,000
Average Payload Capacity, kg ⁴							5,000
Maximum Permissible Weight, kg							18,000
TYRE SIZES							
Front axle max. tyre sizes, (diameter in cm)							650/60R34 (170)
Rear axle max. tyre sizes, (diameter in cm)							900/60R42 (215)

¹ Equipped with 710/70R42 tyres, tread settings of 1,793 mm (valve stem out) or 2,023 mm (valve stem in)

² Overall width dependent on axle configuration and tread settings; overall vehicle width for driving on public roads shall not exceed 2,550 mm

³ Equipped with 205 cm (SRI 975) rear tyres; dimensions will vary depending on tyre manufacturer

⁴ Equipped with ILS/e23/double flat axle/front hitch/3-in-1 hitch with 80 mm ball/Cat 4 rear hitch/IF900/60R42 rear tires/IF600/70R30 front tires/87 liter Diesel

SPECIFICATION 8RT SERIES TRACTORS

	8320RT	8345RT	8370RT
ENGINE PERFORMANCE			
Rated Engine Power (97/68 EC), hp (kW)	320 (235)	345 (254)	370 (272)
Rated Engine Power with IPM (97/68 EC), hp (kW)	355 (261)	380 (279)	405 (298)
Max Engine Power at 1,900 rpm (97/68 EC), hp (kW)	352 (259)	380 (279)	407 (299)
Max Engine Power with IPM at 1,900 rpm (97/68 EC), hp (kW)	368 (271)	394 (290)	420 (309)
Rated Engine Power (ECE-R24), hp (kW)	307 (226)	331 (244)	355 (261)
Max Engine Power at 1,900 rpm (ECE-R24), hp (kW)	338 (249)	364 (268)	391 (287)
Max Engine Power with IPM at 1,900 rpm (ECE-R24), hp (kW)	353 (260)	378 (278)	403 (296)
Intelligent Power Management (hp)	35	35	35
Constant Power Range (rpm)	1,500 - 2,100	1,500 - 2,100	1,500 - 2,100
PTO Torque Rise, %	40	40	40
PTO Power Bulge, %	10	10	10
Engine Peak Torque @ 1,600 rpm (Nm)	1,498	1,615	1,732
ENGINE			
Manufacturer	John Deere Power Systems		
Type	John Deere PowerTech PSS 9.0 L (B20 Diesel Compatible), Diesel, in-line, 6-cylinder, wet-sleeve cylinder liners with 4 valves-in-head		
Rated Engine Speed, rpm	2,100		
Aftertreatment	Longlife & maintenance-free diesel particle filter (DPF), Diesel oxidation filter (DOC), Selective Catalytic Reduction (SCR)		
Engine Air Filter	Dual stage with engine cooling fan aspiration		
Aspiration	Dual Series Turbocharger with fixed geometry first stage & variable geometry second stage - air-to-air aftercooling and cooled exhaust gas recirculation		
Cylinder / displacement, l	6 / 9.0		
Bore and Stroke, mm	118.4 x 136		
Fuel injection	Electronically controlled, high-pressure common rail with electric fuel transfer pump (self priming)		
Fuel Filter System	Two Stage with water separator and service indicator light		
TRANSMISSION OPTIONS			
e23 Transmission with Efficiency Manager			
23 Forward / 11 Reverse Gears, 40 km/h, left & right hand reverser	42 km/h @ 1,600 rpm		
AutoPowr			
Variable, 0.05 - 42 km/h, left & right hand reverser	42 km/h @ 1,550 rpm		
REAR AXLES			
Final Drives	Inboard planetary		
Tread spacing - 120 x 2,750 mm (108 in.) short, Double Flat Axle	1,828-2,337 mm (72-92 in.)		
Tread spacing - 120 x 3,460 mm (136 in.) long, Double Flat Axle - for 3.00 m Controlled Traffic Applications	1,828-3,048 mm (72-120 in.)		
Track type	Camso® DURABUILT® 4500 and 6500 Series Track Belts		
Track widths	400 mm (16") / 450 mm (18") / 600 mm (24") / 625 mm (25") / 760 mm (30")		
Drive Wheel Widths	380 mm (15") - for track widths from 400 mm (16") - 760 mm (30") 600 mm (24") - for track widths from 625 mm (25") - 760 mm (30")		
Mid-Rollers	Rubber Mid-Rollers Polyurethane Mid-Rollers (for 600 mm or narrower belt)		
Undercarriage Suspension	AirCushion adaptive air suspension		
Maximum Suspension Travel at front idlers, mm ¹	400		



	8320RT	8345RT	8370RT
GROUND CONTACT AREA			
with 400 mm (16") track width, m ²		2	
with 450 mm (18") track width, m ²		2.3	
with 600 mm (24") track width, m ²		3.1	
with 625 mm (25") track width, m ²		3.2	
with 760 mm (30") track width, m ²		3.8	
STATIC GROUND PRESSURE (VEHICLE WEIGHT: 16,070 KG)			
with 400 mm (16") track width, kg/cm ²		78.6	
with 450 mm (18") track width, kg/cm ²		69.9	
with 600 mm (24") track width, kg/cm ²		52.4	
with 625 mm (25") track width, kg/cm ²		50.3	
with 760 mm (30") track width, kg/cm ²		41.9	
ELECTRICAL SYSTEM			
Alternator/Battery		200 amps / 12 Volt	
Total cold cranking amps		1,850 (2 batteries in parallel - 925 CCA, group 31 batteries)	
STEERING			
Type		Tilt-telescope steering console with Memory function	
Hydraulic power-steering with electric pump back-up		Speed-sensitive, hydrostatic differential - 406 mm Steering Wheel Diameter, Turns Lock to Lock: 1.8	
HYDRAULIC SYSTEM			
Type		Closed-centre, pressure & flow compensated system (PFC) with load sensing	
Main pump, axial piston (displacement), cm ³		85	
Maximum pressure		204 bar / 300 kPa	
Rated flow, 85 cm ³ pump, l/min		227	
Rear Selective control valves with 1/2 inch ISO couplers		4 / 5 / 6	
Rear Selective control valves with 3/4 inch and 1/2 inch ISO couplers		max. 5 available (SCV 1 : 3/4 inch coupler, SCV 2-5 : 1/2 inch couplers)	
Maximum flow at a single Rear SCV, l/min		1/2 inch coupler: 132; 3/4 inch coupler: 159	
Oil Take out capacity, l		35	
Power beyond couplers		Optional; 1/2 or 3/4 inch couplers	
REAR HITCH			
Type		Electro-hydraulic Lower Link Sensing; load & depth control, infinite mix, float	
Category		4N/3	
Coupler System		Walterscheid Hook Style Ends	
Lift capacity through full lift range, (610 mm behind the coupler, OECD)		8,800 kg	
Maximum Lift Capacity, (measured at the coupler jaw)		11,870 kg	
Lower Link Stabilization		Sway Blocks	
DRAWBAR			
Swinging Drawbar		Cat. 4 with 50 mm pin	
Maximum Vertical Load (Please check country specific limitations)		2,245 kg with Cat. 4, 4,990 kg with Cat. 4 HD	

SPECIFICATION 8RT SERIES TRACTORS

	8320RT	8345RT	8370RT
REAR PTO			
Type	Independent, Electro-hydraulic switched via oil-cooled multi-disc clutch		
PTO 1,000 rpm - Engine rpm @ rated PTO speed	2,000		
Stub 1-3/4 in. (45 mm diameter), 20-spline, 1,000 rpm	Base		
CAB			
Specifications	CommandView III Cab, LH Panorama Door, Automatic Air Conditioning and Generation 4 CommandCenter Display		
Noise level, dB(A)	69		
Cab glass area, m ²	6.5		
Cab volume, m ³	3.6		
Display	Generation 4 Command Center 4100 with 7 inch or 4600 with 10 inch Touchscreen Display, optional Extended Display		
MISCELLANEOUS			
GreenStar Ready	Base		
ISOBUS Implement Connection	Base		
AutoTrac Ready	Base		
JDLink with Ethernet Harnesses	Base		
ServiceADVISOR Remote, capable with JDLink Access & Connect	Optional		
Modular Telematics Gateway (MTG)	Base		
Video input in CommandCenter for camera	1 Video input for 4100 Display, 4 Video inputs for 4600 Display, Using PAL or NTSC signal		
Immobiliser	Optional (check country availability)		
CAPACITIES			
Fuel Tank, l	758		
DEF tank, l	25.3		
Cooling System, l	32.6		
Engine oil capacity, l	25		
Transmission, differential, hydraulic system, l	180		
DIMENSIONS AND WEIGHTS			
Wheelbase, mm	2,515		
Overall Length, mm			
Incl. rear hitch and front weight support without / with weights	6,471 / 6,912		
Overall Height, mm			
From the ground to top of the cab	3,344		
From the ground to top of the beacon light	3,558		
Overall Width, mm ¹			
Rear Axle, End to End (short / long)	2,743 / 3,454 mm (108 / 136 in.)		
Track settings with 2,743 mm (108 in.) rear axle and 625 mm (25 in.) track width ²	1,828-2,337 mm (72-92 in.)		
Track settings with 3,454 mm (136 in.) rear axle and 625 mm (25 in.) track width ²	1,828-3,048 mm (72-120 in.)		
Ground Clearance, mm			
Drawbar clearance	411		
Weights			
Average shipping weight, kg ³	16,225		

¹ Dependent on axle configuration and tread settings

² Outer track width might be narrower than the overall axle widths

³ Equipped with e23 / 87 l diesel / 625 mm (25") tracks / Cat. 4 HD drawbar / Cat. 4 hitch with QC / front weight support without weights

EDITIONS AND CONNECTIVITY PACKAGES FOR 8R SERIES TRACTORS



EDITIONS FOR 8R SERIES TRACTORS

DESCRIPTION	PREMIUM	ULTIMATE
ILS front axle suspension, 40 degree swivel seat with CommandARM controls, iTEC headland management system, AutoTrac/ISOBUS ready, JDLink, Automatic Air Conditioner & Electrically adjustable right and left mirrors are in base		
TRANSMISSION		
e23 Transmission	●	●
AutoPowr Transmission	○	○
CAB		
Active seat	●	○
Cab suspension	-	●
4100 – 7" CommandCenter Display	●	-
4600 – 10" CommandCenter Display	○	●
Standard Light Package	●	-
Premium Light Package	○	●
Outside Mirrors – Power telescoping	-	●
Cooling compartment	○	●
Standard – radio	●	-
Premium – radio	○	●
Battery Disconnect Switch	●	●
HYDRAULICS		
Hydraulic pump 227 l/min	●	-
Hydraulic pump 321 l/min	○	●
4 electrical SCVs – Premium	●	-
5 electrical SCVs – Premium	○	●
6 electrical SCVs – Premium	-	-
Electrical joystick	○	●
Rear hitch with two sway blocks	●	-
Rear hitch with two deluxe stabilizers	○	●

Legend: ● base for edition / ○ optional for edition / - excluded for edition

CONNECTIVITY PACKAGES FOR 8R/8RT SERIES TRACTORS*

DESCRIPTION	PREMIUM	ULTIMATE
AutoTrac Ready	Base	Base
Tractor Implement Automation	●	●
4600 – 10" CommandCenter Display	●	●
CommandCenter AutoTrac Activation	●	-
CommandCenter Premium Activation	-	●
JDLink Access	●	-
JDLink Connect	-	●
MyJobConnect / Premium	-	●/○
StarFire 6000 – SF1	○	○
StarFire 6000 – SF3	○	○

Legend: ● base for package / ○ optional for package / - excluded for package

*Elements of the Connectivity Packages are a limited promotional offer and include time based subscriptions. Be aware that some of the Connectivity Packages as well as elements could not be available in all regions. Please contact your local John Deere dealer for availability.

In 1837 blacksmith and inventor John Deere had an idea that would change the face of agriculture forever: the first commercially successful, self scouring steel plough. Since then John Deere has always been ready and willing to embrace change. Yet the company has never outgrown, nor forgotten, its founder's original core values: integrity, quality, commitment and innovation. These values determine the way we work, the quality we offer and our commitment to customers. Living up to a legacy isn't always easy. John Deere's heritage of achievement not only lives on in our products it also lives on in every way we touch and enrich the lives of those linked to the land, worldwide. It's a commitment that distinguishes us in the marketplace and drives us towards even higher levels of performance.

NOTHING RUNS LIKE A DEERE



This literature has been compiled for worldwide circulation. While general information, pictures and descriptions are provided, some illustrations and text may include finance, credit, insurance, product options and accessories not available in all regions. Please contact your local dealer for details. John Deere reserves the right to change specification and design of products described in this literature without notice. The green and yellow colour scheme, the leaping deer logo and the JOHN DEERE word mark are trademarks of Deere & Company.